

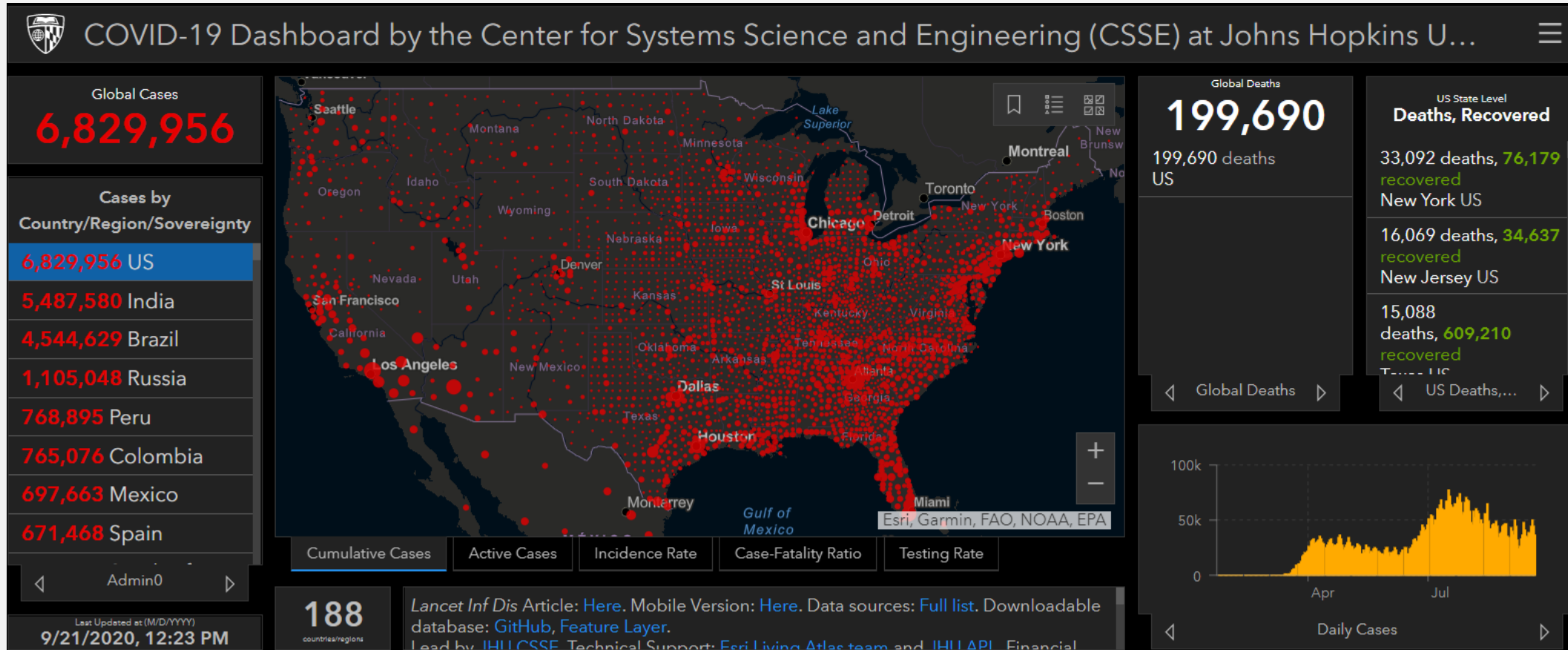
CITY OF HUNTINGTON BEACH **COVID-19 RESPONSE UPDATE**

City Council Meeting
September 21, 2020



SITUATIONAL UPDATE

U.S. TOTALS



SITUATIONAL UPDATE

U.S. TOTALS

✓ Table 1. Deaths involving coronavirus disease 2019 (COVID-19), pneumonia, and influenza reported to NCHS by week ending date, United States. Week ending 2/1/2020 to 9/19/2020.*

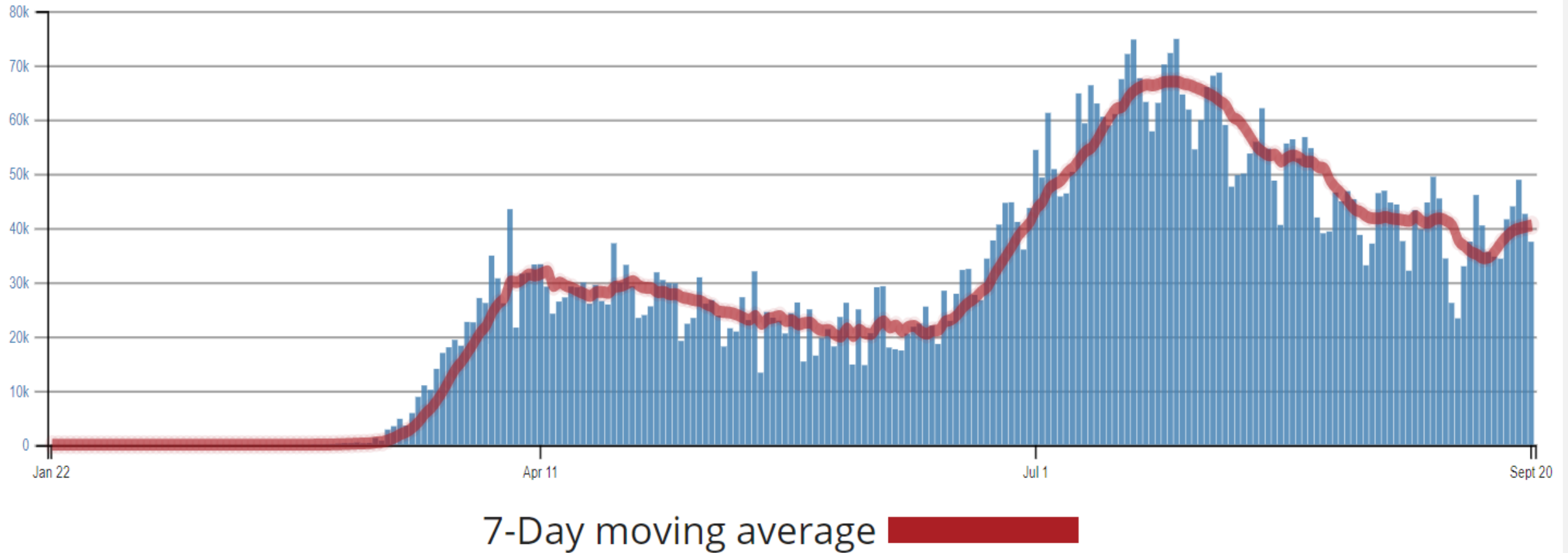
Updated September 21, 2020

Week ending date in which the death occurred	All Deaths involving COVID-19 (U07.1) ¹	Deaths from All Causes	Percent of Expected Deaths ²	Deaths involving Pneumonia, with or without COVID-19, excluding Influenza deaths (J12.0-J18.9) ³	Deaths involving COVID-19 and Pneumonia, excluding Influenza (U07.1 and J12.0-J18.9) ³	All Deaths involving Influenza, with or without COVID-19 or Pneumonia (J09-J11), includes COVID-19 or Pneumonia ⁴	Deaths involving Pneumonia, Influenza, or COVID-19 (U07.1 or J09-J18.9) ⁵
Total Deaths	185,981	1,999,743	110	190,068	83,738	6,694	298,009

SITUATIONAL UPDATE

U.S. TOTALS

Daily Trends in Number of COVID-19 Cases in the United States Reported to CDC



SITUATIONAL UPDATE CALIFORNIA

Tracking COVID-19

In California, Updated September 21, 2020 at 11:00 AM with data from September 20, 2020

Cases

781,694

+0.4%

Deaths

15,018

+ 0.2%

Tests

13,672,782

How are COVID-19 cases progressing in each county?

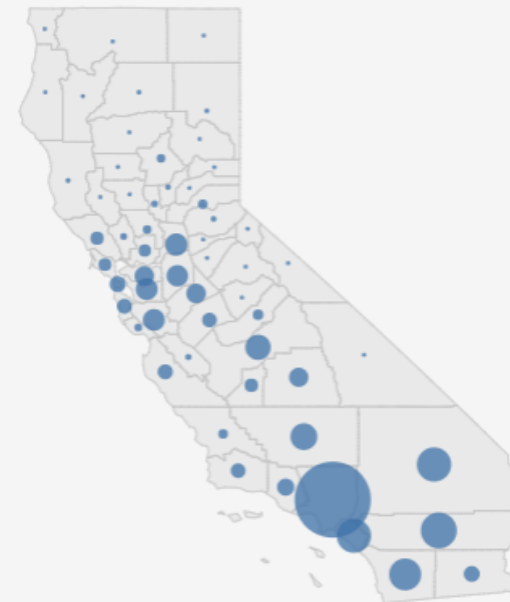
Positive
Cases

New
Cases

Total
Deaths

New
Deaths

Positive Cases by County



Los Angeles	260,770	
Riverside	56,783	
San Bernardino	51,559	
Orange	51,233	
San Diego	44,579	
Kern	30,992	
Fresno	27,769	
Sacramento	21,394	
Alameda	20,425	
Santa Clara	20,330	
San Joaquin	19,578	
Stanislaus	16,159	
Contra Costa	15,917	
Tulare	15,528	
Ventura	12,406	

SITUATIONAL UPDATE ORANGE COUNTY

COVID-19 Cases in Orange County				
	20-Sep	21-Sep	% Increase Over Prior Day	# Increase Over Prior Day
Total Cases	52,063	52,201	0.3%	138
Total Deaths	1,128	1,128	0.0%	-

Orange County, CA COVID-19 Case Count

Cumulative
Cases to Date
(includes deaths)

52,201

2,138 SNF residents, 556 OC jail inmates, and 158 Persons Experiencing Homelessness

Daily COVID
Positive Cases
Received

138

Cumulative
Deaths to Date

1,128

Includes 473 SNF residents, 77 ALF residents, 0 OC jail inmates, and 1 Persons Experiencing Homelessness

Deaths Reported
Today

0

0 skilled nursing facility residents, 0 skilled nursing staff, 0 assisted living facility residents, 0 residents (not living in a facility)

Cumulative Tests
To Date

798,188

Tests Reported
Today

4,485

Cases Currently
Hospitalized

178*

**Includes ICU cases*

Cases Currently
in ICU

64

ICU - Intensive Care Units

Cumulative
Recovered to
Date

46,948*

Numbers fluctuate day-by-day due to changes in patient condition(s). Data are gathered daily at one point in time.

SITUATIONAL UPDATE

ORANGE COUNTY

ORANGE COUNTY COVID-19 DASHBOARD

Cumulative Cases

52,201

(Includes Deaths, PCR Positive only)

Cumulative Antigen Positive Cases***

1,323

Daily PCR+ Cases Received

138

Cumulative Deaths

1,128

Daily (New) Deaths Received

0

Cumulative PCR Tests

798,188

Daily PCR Tests Received

4,485

Recovered Cases

46,948

(Estimated)

Updated: 9/21/2020

CURRENT TIER: **SUBSTANTIAL (TIER 2)**

Daily COVID-19 Positive Cases per 100,000

4.7

(7-Day Average with 7-Day Lag)

Testing Positivity Percent

3.9%

(7-Day Average with 7-Day Lag)

Tier Framework Metrics

County Risk Level*	Daily New Cases (per 100k)** (7-day average w/ 7-day lag)	Positive Tests (7-day average w/ 7-day lag)
WIDESPREAD Tier 1	>7 new daily cases (per 100k)	>8%
SUBSTANTIAL Tier 2	4 - 7 new daily cases (per 100k)	5 - 8%
MODERATE Tier 3	1 - 3.9 new daily cases (per 100k)	2 - 4.9%
MINIMAL Tier 4	<1 new daily cases (per 100k)	<2%

*Counties are assigned a tier based on two metrics: test positivity and case rate. The case rate is adjusted based on testing volume per 100,000 population as described below. Due to variability in data, this adjustment does not apply to small counties (defined as those with a population less than ~100,000 residents)

- Calculated as the case rate multiplied by a case rate adjustment factor that is based on the difference between the county testing volume (testing volume, tests per 100,000 per day, described below) and the median testing volume calculated across all counties. The median testing volume thus forms an anchor for this adjustment and is recalculated every four weeks to prevent undue fluctuation while remaining sensitive to evolving testing trends.
- For counties with a testing volume above the median, the adjustment factor is less than 1, decreasing in a linear manner from 1.0 to 0.6 as testing volume increases from the anchor point to 2x that value. The adjustment factor remains at 0.6 if the county testing volume is greater than 2x the state median.
- For counties with a testing volume below the state median, the adjustment factor is greater than 1, increasing in a linear manner from 1.0 to 1.4 as county testing volume decreases from the state median to zero.
- The linear adjustment formula can be expressed mathematically as follows:
$$1 - ((\text{county testing rate} - \text{state median testing rate}) / \text{state median testing rate}) * 0.4$$

**Case rate will be determined using cases confirmed by PCR

***HCA is tracking and conducting contact tracing on antigen+ cases.

Moving through the Tiers

Rules of the framework:

- CDPH will assess indicators weekly. The first weekly assessment will be released on September 8, 2020.
- A county will remain in a tier for a minimum of three weeks before being able to advance to a later tier.
- A county can only move forward one tier at a time, even if metrics qualify for a more advanced tier.
- If a county's case rate and test positivity measure fall into two different tiers, the county will be assigned to the more restrictive tier.
- City local health jurisdiction (LHJ) data will be included in overall metrics, and city LHJs will be assigned the same tier as the surrounding county.

Initial step applied on August 28, 2020:

- Each county is assigned to a tier based on an adjusted case rate and test positivity from the prior two reporting periods. If a county's case rate and test positivity measure fall into two different tiers, the county will be assigned the more restrictive tier.
- This tier status will be effective on Monday, August 31, 2020.
- If a county is initially assigned to Purple Tier 1 and has met the criteria for a less restrictive tier the prior week, the county only needs to meet the criteria for a less restrictive tier for one more week to move to the Red Tier 2. (For the September 8, 2020 assignment, a county does not need to remain in the Purple Tier 1 for three weeks. For all subsequent assessments, a county must remain in a tier for three weeks and meet the criteria to advance as described below.)

To advance:

- A county must have been in the current tier for a minimum of three weeks, except as described in the "Initial step applied on August 28, 2020" section above.
- A county must meet criteria for the next tier for both measures for the prior two consecutive weeks in order to progress to the next tier.
- In addition, the state will establish health equity measures on activities such as data collection, testing access, contact tracing, supportive isolation, and outreach that demonstrate a county's ability to address the most impacted communities within a county. Additional measures addressing health outcomes such as case rates, hospitalizations and deaths, will also be developed and tracked for improvement.

To move back:

- During the weekly assessment, if a county's adjusted case rate and/or test positivity has been within a more restrictive tier for two

LOCAL AVAILABLE HOSPITAL RESOURCES

ORANGE COUNTY COVID-19 DASHBOARD

Cumulative Cases

52,201

(Includes Deaths, PCR Positive only)

Cumulative Antigen Positive Cases***

1,323

Daily PCR+ Cases Received

138

Cumulative Deaths

1,128

Daily (New) Deaths Received

0

Cumulative PCR Tests

798,188

Daily PCR Tests Received

4,485

Recovered Cases

46,948

(Estimated)

Updated: 9/21/2020

Current Hospital Patients

178

(Includes ICU)

Current ICU Patients

64

ICU - Intensive Care Unit

LIMITED HOSPITAL CAPACITY

Percent ICU Beds Currently Available

35%

Percent Ventilators Currently Available

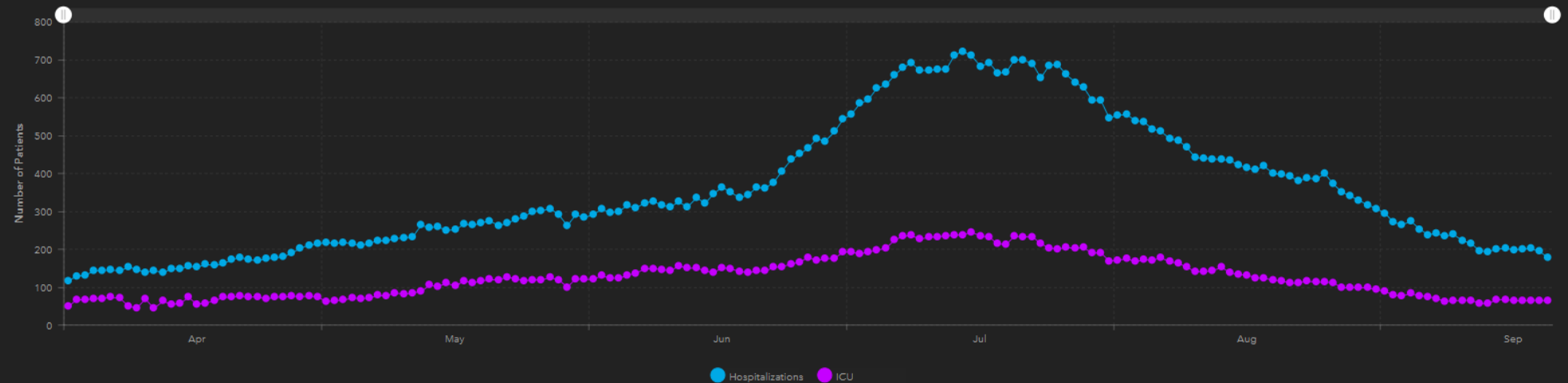
65%

INCREASING HOSPITALIZATION

Change in 3-day Average Hospitalized Patients

-4.5%

Daily Hospital/ICU Patient Census



SITUATIONAL UPDATE

HUNTINGTON BEACH

Huntington Beach Total Cases	Huntington Beach Total Deaths
2,354 cases (213 SNFs)	70 deaths (44 SNFs)

SITUATIONAL UPDATE

HUNTINGTON BEACH

- Current Cases in Huntington Beach: 2,354
- Population: 203,761
- 4th largest city population in Orange County
- 6th most confirmed COVID-19 cases by city in Orange County
 - Behind Santa Ana, Anaheim, Garden Grove, Orange, and Fullerton
- Significant number of Huntington Beach COVID-19 cases are from Skilled Nursing Facilities
 - 9.0% of total cases from SNFs
 - 62.9% of total deaths from SNFs
 - Includes patients and nursing facility staff
 - HB skilled nursing facilities numbers rose early
 - Other OC facilities also reporting increased cases

SITUATION AT A GLANCE

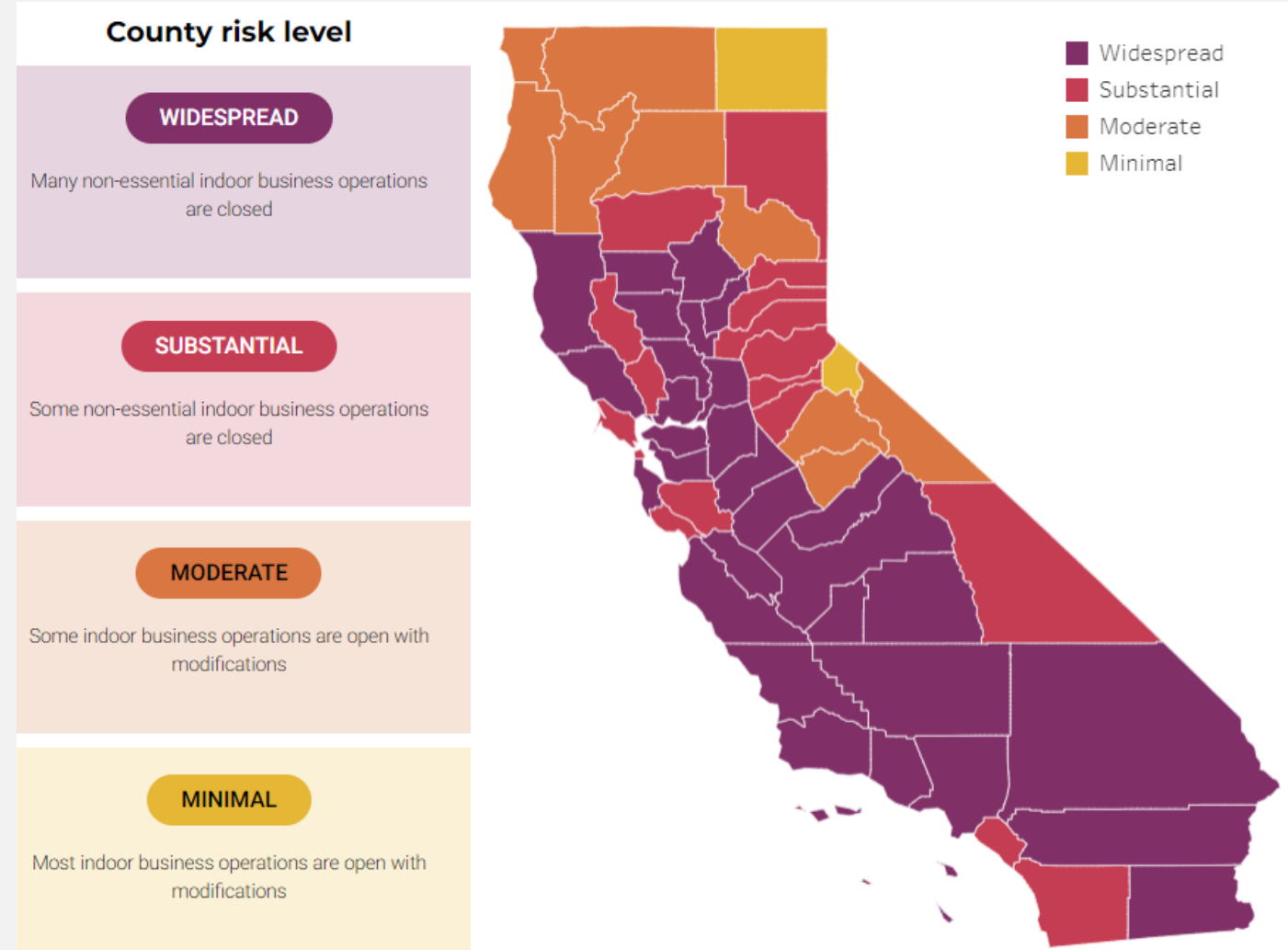
Location		9/21/2020	% Increase Over Prior Day	# Increase Over Prior Day
Huntington Beach	Total Cases	2,354	0.3%	8
	Total Deaths	70	0.0%	-
Orange County	Total Cases	52,201	0.3%	138
	Total Deaths	1,128	0.0%	-
California	Total Cases	781,694	0.4%	3,294
	Total Deaths	15,018	0.2%	31
United States	Total Cases	6,829,956	0.6%	38,978
	Total Deaths	199,690	0.1%	230

SITUATIONAL UPDATE

OPENING UP THE CALIFORNIA ECONOMY

Orange County in Tier 2 - Substantial Transmission

- Orange County currently in Tier 2 Reopening
- Indoor capacity limits ranging from:
 - 10% capacity for Gyms & Fitness Facilities
 - The lesser of 25% capacity or 100 people for Restaurants, Places of Worship, Movie Theaters
 - 25% capacity for Museums, Zoos, and Aquariums
 - 50% capacity for Retail
- Find all business sector guidelines at: <https://covid19.ca.gov/safer-economy/>



SITUATIONAL UPDATE

SMALL BUSINESS GRANT PROGRAM

- **Small Business Grants**
 - City provided with \$4.75 million to distribute to local business community
 - 824 businesses originally selected, pending review of supporting documentation
 - 237 alternate businesses have been pulled into the review process thus far
 - To date, \$3.2 million has been distributed to small business community



SITUATIONAL UPDATE COVID-19 INFORMATION DISTRIBUTION

- HB Ready Website

- New stand-alone website stood up at the start of the COVID-19 situation
- Has become an invaluable resource for staff and the community related to COVID-19 issues
- Recently, the City logged our 1-millionth unique visitor to the HB Ready website!



SITUATIONAL UPDATE

FOOD DISTRIBUTION PROGRAMS

- Food Distribution Program
 - At the start of COVID-19 situation, the City deployed resources to expand our food distribution programs
 - Since March 2020, the City has distributed more than 78,000 meals to those experiencing food insecurity



QUESTIONS?

