

EXHIBIT A-1

LEGAL DESCRIPTION OF PARCEL MAP NO. 87-424 EASEMENT

That certain easement for water line purposes, situated in the City of Huntington Beach, County of Orange, State of California, lying within Parcels 1 through 4, Parcels “B” and “C” of Parcel Map No. 87-424 as shown on a map thereof filed in Book 237, Pages 4 through 6 of Parcel Maps in the Office of the County Recorder of said Orange County, more particularly described as Easement Note (circle) “W” on the map of said Parcel Map No. 87-424.

EXHIBIT "A-2"

* SEE SHEET 2 FOR BOUNDARY AND INDEX MAP,
BASIS OF BEARING AND MONUMENT NOTES.

EASEMENT NOTES:

- ① INDICATES EASEMENT FOR WATER LINE PURPOSE,
DEDICATED TO THE CITY OF HUNTINGTON BEACH.
- THE LETTERED LOTS ARE FOR PARKING AND LANDSCAPING
PURPOSES.

CURVE DATA

DELTA	RADIUS	LENGTH	TANGENT
16°41'55"	59.13	17.23	6.68
16°41'55"	83.13	24.23	12.20
16°41'55"	83.13	24.23	12.20
16°41'55"	59.13	17.23	6.68
53°36'44"	18.00	19.98	11.16
09°25'16"	180.75	29.77	14.92

LINE DATA

BEARING	DISTANCE
N 44°22'42"W	17.00
N 45°37'18"E	31.00
N 44°22'42"W	6.32
N 45°37'18"E	33.00
N 44°22'42"W	16.46
N 45°37'18"E	7.82
N 44°22'42"W	7.51
N 45°37'18"E	10.68
N 44°22'42"W	33.00
N 45°37'18"E	33.07
N 44°22'42"W	31.00
N 45°37'18"E	17.00
N 0°37'18"E	8.00
N 89°22'42"W	10.00
N 0°37'18"E	26.00
N 0°37'18"E	27.00
N 89°22'42"W	30.00
N 89°22'42"W	85.00
N 89°22'42"W	30.00
N 89°22'42"W	69.76

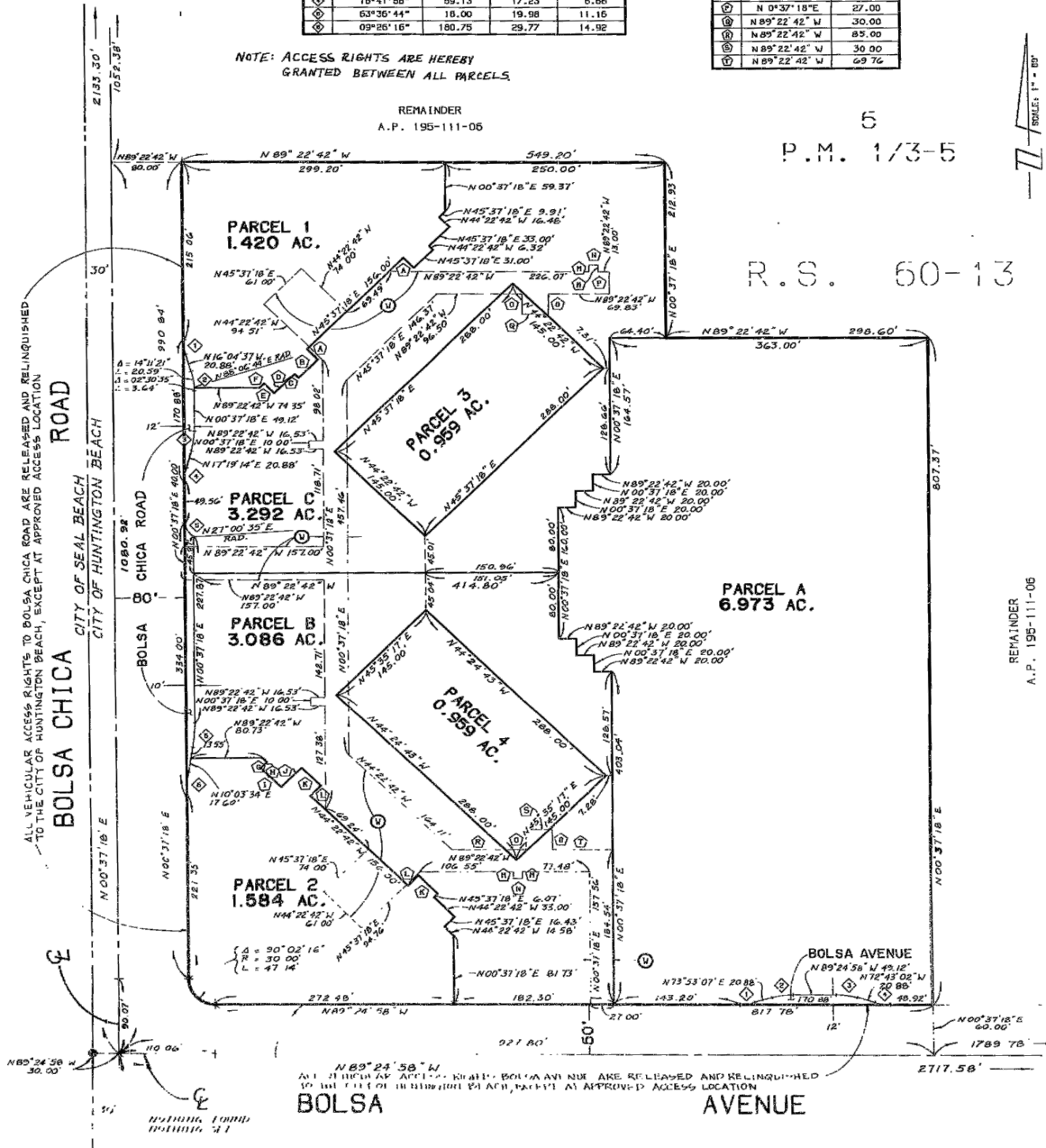
SEE SHEET 2

NOTE: ACCESS RIGHTS ARE HEREBY
GRANTED BETWEEN ALL PARCELS.

REMAINDER
A.P. 195-111-06

P.M. 1/3-5

R.S. 60-13



PREPARED BY:

Michael Baker
INTERNATIONAL

5 HUTTON CENTRE
DRIVE, SUITE 500
SANTA ANA, CA 92707
PHONE: (949)472-3505
MBAKERINTL.COM

EXHIBIT "A-2"
PARCEL MAP No. 87-424

SCALE: NO SCALE DATE: 9/5/2019

1228444.02/OC
297335-01160

EXHIBIT A-2

-1-

H:\PDATA\165711\CADD\LAND\EXHIBITS\165711-PH1-DW ESMT QUITCLAIM-EXHIBIT B.DWG KHOF, CINDY Y 9/5/2019 1:15 PM