

SITE NAME: HBNPB 07B  
SITE NUMBER: CRAN\_RLOS\_HBNPB\_007  
PROJECT: CRAN/ SMALL CELL/ PICO  
USID: 191800/ FA: 14809765  
PACE: MRLOS045233



POLE TYPE: (N) CONCRETE LIGHT POLE  
POLE ID #: 4208324E  
LATITUDE/LONGITUDE: 33.668575/ -118.016861  
SITE ADDRESS: 112 GOLDENWEST ST.,  
HUNTINGTON BEACH, CA 92648

ALL WORK AND MATERIALS SHALL BE PERFORMED AND INSTALLED IN ACCORDANCE WITH THE CURRENT EDITIONS OF THE FOLLOWING CODES AS ADOPTED BY THE LOCAL GOVERNING AUTHORITIES. NOTHING IN THESE PLANS IS TO BE CONSTRUCTED TO PERMIT WORK NOT CONFORMING TO THESE CODES.

- 2016 CALIFORNIA ADMINISTRATIVE CODE
- 2016 CALIFORNIA BUILDING CODE
- 2016 CALIFORNIA ELECTRIC CODE
- 2016 CALIFORNIA MECHANICAL CODE
- 2016 CALIFORNIA PLUMBING CODE
- 2016 CALIFORNIA FIRE CODE
- ANY LOCAL BUILDING CODE AMENDMENTS TO THE ABOVE
- CITY/COUNTY ORDINANCES

HANDICAP REQUIREMENTS:  
FACILITY IS UNMANNED AND NOT FOR HUMAN HABITATION. HANDICAPPED ACCESS NOT REQUIRED IN ACCORDANCE WITH CALIFORNIA ADMINISTRATIVE STATE CODE PART 2, TITLE 24, CHAPTER 11B, SECTION 1103B.

#### CODE COMPLIANCE

THE FACILITY IS UNMANNED AND NOT FOR HUMAN HABITATION. A TECHNICIAN WILL VISIT THE SITE AS REQUIRED FOR ROUTINE MAINTENANCE. THE PROJECT WILL NOT RESULT IN ANY SIGNIFICANT DISTURBANCE OR EFFECT ON DRAINAGE; NO SANITARY SEWER SERVICE, POTABLE WATER, OR TRASH DISPOSAL IS REQUIRED AND NO COMMERCIAL SIGNAGE IS NEW.

#### GENERAL NOTES



#### Dig Alert

Know what's below.  
Call before you dig.

CALIFORNIA SOUTH  
Call Two Working Days Before You Dig!  
811 / 800-227-2600

#### DIG ALERT

PUBLIC/PRIVATE: PUBLIC RIGHT-OF-WAY  
ADDRESS: 112 GOLDENWEST ST.,  
HUNTINGTON BEACH, CA 92648  
APPLICANT: AT&T  
ADDRESS: 1452 EDINGER AVE  
TUSTIN, CA 92780  
LATITUDE (NAD 83): 33.668575  
LONGITUDE (NAD 83): -118.016861  
LAT/LONG TYPE: NAD-83  
GROUND ELEVATION (NAVD 88): ±20'  
JURISDICTION: CITY OF HUNTINGTON BEACH  
CURRENT ZONING: PUBLIC RIGHT OF WAY  
PROPOSED USE: UNMANNED TELECOMMUNICATIONS  
POWER COMPANY: SCE  
ADDRESS: 1 INNOVATION WAY  
POMONA, CA 91768

#### PROJECT SITE INFORMATION

PROJECT MANAGER:  
M SQUARED WIRELESS  
1387 CALLE AVANZADO  
SAN CLEMENTE, CA 92673

SAC/ZONING/PERMITTING:  
M SQUARED WIRELESS  
1387 CALLE AVANZADO  
SAN CLEMENTE, CA 92673

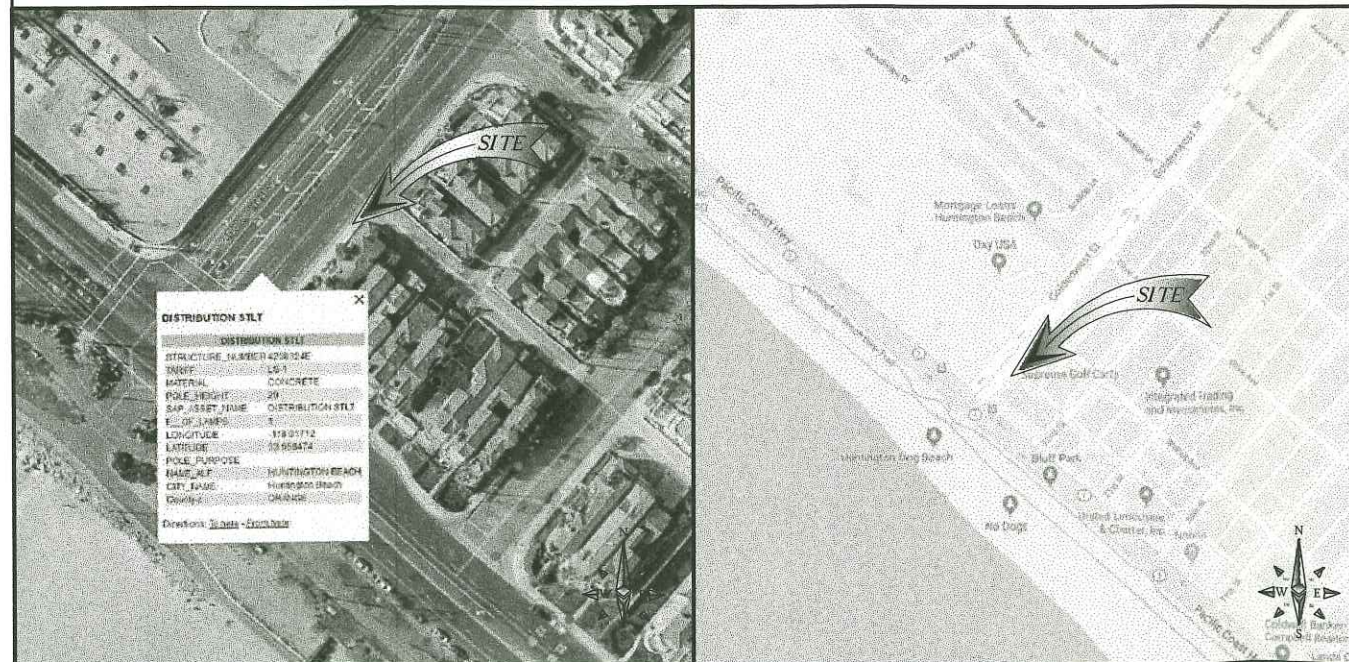
RF ENGINEER:  
AT&T  
1452 EDINGER AVE.  
TUSTIN, CA 92618  
CONTACT: KARLO DAVINAGRACIA  
EMAIL: KD270J@ATT.COM

ENGINEER:  
M SQUARED WIRELESS  
1387 CALLE AVANZADO  
SAN CLEMENTE, CA 92673

SENIOR TECHNICAL PROJECT MANAGER:  
AT&T  
1452 EDINGER AVE.  
TUSTIN, CA 92618  
CONTACT: TED SUEKAWA  
EMAIL: TS4994@ATT.COM

#### PROJECT TEAM

#### AREA MAPS



VICINITY MAP

LOCATION MAP

DIRECTIONS FROM AT&T OFFICE:  
DIRECTION ARE TAKEN FROM  
1452 EDINGER AVE.  
TUSTIN, CA 92780

- TURN LEFT ONTO EDINGER AVE
- TURN LEFT ONTO STATE ROUTE 55 S
- MERGE ONTO STATE ROUTE 55 S
- TAKE THE CA-1 RAMP
- TURN RIGHT ONTO CA-1 N
- TURN RIGHT ONTO GOLDENWEST ST

DESTINATION WILL BE ON THE RIGHT.  
112 GOLDENWEST ST., HUNTINGTON BEACH, CA 92648

#### DRIVING DIRECTIONS

IF USING 11"x17" PLOT, DRAWING WILL BE HALF SCALE

#### CONSTRUCTION DRAWING

THE FOLLOWING PARTIES HEREBY APPROVE AND ACCEPT THESE DOCUMENTS & AUTHORIZE THE SUBCONTRACTOR TO PROCEED WITH THE CONSTRUCTION DESCRIBED HEREIN. ALL DOCUMENTS ARE SUBJECT TO REVIEW BY THE LOCAL BUILDING DEPARTMENT & MAY IMPOSE CHANGES OR MODIFICATIONS.

APPROVED BY:	INITIALS:	DATE:
AT&T RF ENGINEER:		
AT&T OPERATIONS:		
SITE ACQUISITION MANAGER:		
PROJECT MANAGER:		
ZONING VENDOR:		
LEASING VENDOR:		
CONSTRUCTION MANAGER:		
A/E MANAGER:		
PROPERTY OWNER:		
UTILITY MANAGER:		

#### APPROVALS

AT&T PROPOSES TO INSTALL A NEW WIRELESS INSTALLATION LOCATED IN THE PUBLIC RIGHT OF WAY TO (N) CONCRETE LIGHT POLE.

THE SCOPE WILL CONSIST OF THE FOLLOWING:

- \* SCE TO REMOVE (1) EXISTING SCE CONCRETE STREETLIGHT
- \* SCE TO INSTALL (1) 29'-3" CONCRETE STREETLIGHT
- \* AT&T TO INSTALL (4) NEW AT&T REMOTE RADIO UNITS
- \* AT&T TO INSTALL (1) NEW AT&T OMNI-DIRECTIONAL ANTENNA
- \* AT&T TO INSTALL (1) NEW AT&T EQUIPMENT SHROUD
- \* AT&T TO INSTALL (1) NEW RAYCAP DISCONNECT
- \* AT&T TO INSTALL (1) NEW HANDHOLE

#### PROJECT DESCRIPTION

SHEET NO:	SHEET TITLE
T-1	TITLE SHEET
GN-1	GENERAL NOTES
A-1	SITE PLAN
A-2	ELEVATIONS
A-3	ELEVATIONS
A-4	SITE IMAGE
D-1	DETAILS
D-2	DETAILS
S-1	POLE DETAILS
E-1	ELECTRICAL & GROUNDING DETAILS

#### DRAWING INDEX

SUBCONTRACTOR SHALL VERIFY ALL PLANS & EXISTING DIMENSIONS & CONDITIONS ON THE JOB SITE & SHALL IMMEDIATELY NOTIFY THE ENGINEER IN WRITING OF ANY DISCREPANCIES BEFORE PROCEEDING WITH THE WORK OR BE RESPONSIBLE FOR SAME.

#### DO NOT SCALE DRAWINGS



333 COMMERCE, STE. 200  
IRVINE, CA 92602



DRAWN BY: EG

CHECKED BY: MM

A	01/16/2019	90% CONSTRUCTION
REV	DATE	DESCRIPTION

IT IS A VIOLATION OF LAW FOR ANY PERSON, UNLESS THEY ARE ACTING UNDER THE DIRECTION OF A LICENSED PROFESSIONAL ENGINEER, TO ALTER THIS DOCUMENT.

SITE ID: HBNPB 07B  
112 GOLDENWEST ST.  
HUNTINGTON BEACH, CA, 92648

SHEET TITLE

TITLE SHEET

SHEET NUMBER

T-1



1. THE FACILITY IS AN UNOCCUPIED DIGITAL TELECOMMUNICATION FACILITY.
2. PLANS ARE NOT TO BE SCALED AND ARE INTENDED TO BE A DIAGRAMMATIC OUTLINE ONLY, UNLESS NOTED OTHERWISE. THE WORK SHALL INCLUDE FURNISHING MATERIALS, EQUIPMENT, APPURTENANCES AND LABOR NECESSARY TO COMPLETE ALL INSTALLATIONS AS INDICATED ON THE DRAWINGS.
3. PRIOR TO THE SUBMISSION OF BIDS, THE CONTRACTORS SHALL VISIT THE JOB SITE AND BE RESPONSIBLE FOR ALL CONTRACT DOCUMENTS, FIELD CONDITIONS AND DIMENSIONS, AND CONFIRMING THAT THE WORK MAY BE ACCOMPLISHED AS SHOWN PRIOR TO PROCEEDING WITH CONSTRUCTION. ANY DISCREPANCIES ARE TO BE BROUGHT TO THE ATTENTION OF THE IMPLEMENTATION ENGINEER AND ENGINEER PRIOR TO PROCEEDING WITH THE WORK.
4. THE CONTRACTOR SHALL OBTAIN, IN WRITING, AUTHORIZATION TO PROCEED BEFORE STARTING WORK ON ANY ITEM NOT CLEARLY DEFINED OR IDENTIFIED BY THE CONTRACT DOCUMENTS.
5. THE CONTRACTOR SHALL INSTALL ALL EQUIPMENT AND MATERIALS IN ACCORDANCE WITH MANUFACTURER'S RECOMMENDATIONS UNLESS SPECIFICALLY INDICATED OTHERWISE OR WHERE LOCAL CODES OR REGULATIONS TAKE PRECEDENCE.
6. ALL WORK PERFORMED AND MATERIALS INSTALLED SHALL BE IN STRICT ACCORDANCE WITH ALL APPLICABLE CODES, REGULATIONS AND ORDINANCES. CONTRACTOR SHALL GIVE ALL NOTICES AND COMPLY WITH ALL LAWS, ORDINANCES, RULES, REGULATIONS AND LAWFUL ORDERS OF ANY PUBLIC AUTHORITY REGARDING THE PERFORMANCE OF THE WORK. MECHANICAL AND ELECTRICAL SYSTEMS SHALL BE INSTALLED IN ACCORDANCE WITH ALL APPLICABLE MUNICIPAL AND UTILITY COMPANY SPECIFICATIONS, AND LOCAL AND STATE JURISDICTIONAL CODES, ORDINANCES AND APPLICABLE REGULATIONS.
7. THE GENERAL CONTRACTOR SHALL SUPERVISE AND DIRECT THE WORK, USING THE BEST SKILLS AND ATTENTION. THE CONTRACTOR SHALL BE SOLELY RESPONSIBLE FOR ALL CONSTRUCTION MEANS, METHODS, TECHNIQUES, SEQUENCES AND PROCEDURES AND FOR COORDINATING ALL PORTIONS OF THE WORK UNDER THE CONTRACT INCLUDING CONTRACT AND COORDINATION WITH THE IMPLEMENTATION ENGINEER AND WITH THE LANDLORD'S AUTHORIZED REPRESENTATIVE.
8. SEAL PENETRATIONS THROUGH FIRE RATED AREAS WITH U.L. LISTED AND FIRE CODE APPROVED MATERIALS.
9. PROVIDE A PORTABLE FIRE EXTINGUISHER WITH A RATING OF NOT LESS THAN 2-A OR 2-A10BC WITHIN 75 FEET TRAVEL DISTANCE TO ALL PORTIONS OF THE PROJECT AREA DURING CONSTRUCTION.
10. DETAILS ARE INTENDED TO SHOW END RESULT OF DESIGN. MINOR MODIFICATIONS MAY BE REQUIRED TO SUIT JOB DIMENSIONS OR CONDITIONS, AND SUCH MODIFICATIONS SHALL BE INCLUDED AS PART OF THE WORK.
11. REPRESENTATIONS OF TRUE NORTH, OTHER THAN THOSE FOUND ON THE PLOT OF SURVEY DRAWING (SHEET L1 OR SHEET C-1), SHALL NOT BE USED TO IDENTIFY OR ESTABLISH THE BEARING OF TRUE NORTH AT THE SITE. THE CONTRACTOR SHALL RELY SOLELY ON THE PLOT OF SURVEY DRAWING AND ANY SURVEYOR'S MARKINGS AT THE SITE FOR THE ESTABLISHMENT OF TRUE NORTH, AND SHALL NOTIFY THE ENGINEER PRIOR TO PROCEEDING WITH THE WORK IF ANY DISCREPANCY IS FOUND BETWEEN THE VARIOUS ELEMENTS OF THE WORKING DRAWINGS AND THE TRUE NORTH ORIENTATION AS DEPICTED ON THE CIVIL SURVEY. THE CONTRACTOR SHALL ASSUME SOLE LIABILITY FOR ANY FAILURE TO NOTIFY THE ENGINEER.

## 1

13. KEEP GENERAL AREA CLEAN, HAZARD FREE, AND DISPOSE OF ALL DIRT, DEBRIS, RUBBISH AND REMOVE EQUIPMENT NOT SPECIFIED AS REMAINING ON THE PROPERTY. LEAVE PREMISES IN CLEAN CONDITION AND FREE FROM PAINT SPOTS, DUST OR SMUDGES OF ANY NATURE.
14. PENETRATIONS OF ROOF MEMBRANES SHALL BE PATCHED/FLASHED AND MADE WATERTIGHT USING LIKE MATERIALS IN ACCORDANCE WITH NRCA ROOFING STANDARDS AND DETAILS. CONTRACTOR SHALL OBTAIN DETAILING CLARIFICATION FOR SITE-SPECIFIC CONDITIONS FROM ENGINEER, IF NECESSARY, BEFORE PROCEEDING.
15. BEFORE ORDERING AND/OR BEFORE FABRICATING/CONSTRUCTING/INSTALLING ANY ITEMS, VERIFY THE TYPES AND QUANTITIES.
16. CONTRACTOR SHALL PROVIDE SITE FOREMAN WITH A CELLULAR PHONE AND PAGER, AND KEEP SAME ON SITE WHENEVER PERSONNEL ARE ON SITE.
17. THE CONTRACTOR SHALL VERIFY ALL DIMENSIONS AND CONDITIONS ON THE SITE AND NOTIFY THE PROJECT MANAGER OF ANY DISCREPANCIES BEFORE STARTING ANY WORK.
18. CONTRACTOR TO PROVIDE COMPLETE SET OF AS BUILT DRAWINGS WITHIN 10 WORKING DAYS OF PROJECT COMPLETION.
19. CONTRACTOR IS TO EXCAVATE 6" BELOW EXISTING GRADE AND SPRAY WITH WEED CONTROL. REPLACE WITH CLASS II AGGREGATE BASE AND CRUSHED WASHED ROCK. AS SPECIFIED ON SITE PLAN.
20. CONTRACTOR SHALL PROVIDE TOILET FACILITY DURING ALL PHASES OF CONSTRUCTION.
21. PRIOR TO THE COMMENCEMENT OF CONSTRUCTION OR THE FABRICATION OF MATERIALS TO BE INSTALLED AT THE SITE, THE CONTRACTOR SHALL FIELD VERIFY ALL DIMENSIONS INCLUDING AS-BUILT DIMENSIONS OF EXISTING STRUCTURES OR STRUCTURAL ELEMENTS HAVING A BEARING ON THE SCOPE OF THE WORK TO BE PERFORMED. IF ANY DISCREPANCY IS FOUND BETWEEN THE VARIOUS ELEMENTS OF THE WORKING DRAWINGS AND THE DIMENSIONS OR CONDITIONS FOUND TO BE EXISTING IN THE FIELD, THE CONTRACTOR SHALL NOTIFY THE ENGINEER AND OBTAIN DESIGN RESOLUTION PRIOR TO PROCEEDING WITH THE PORTION(S) OF THE WORK AFFECTED. THE CONTRACTOR SHALL ASSUME SOLE LIABILITY FOR ANY FAILURE TO SO NOTIFY THE ENGINEER AND OBTAIN RESOLUTION BEFORE PROCEEDING.

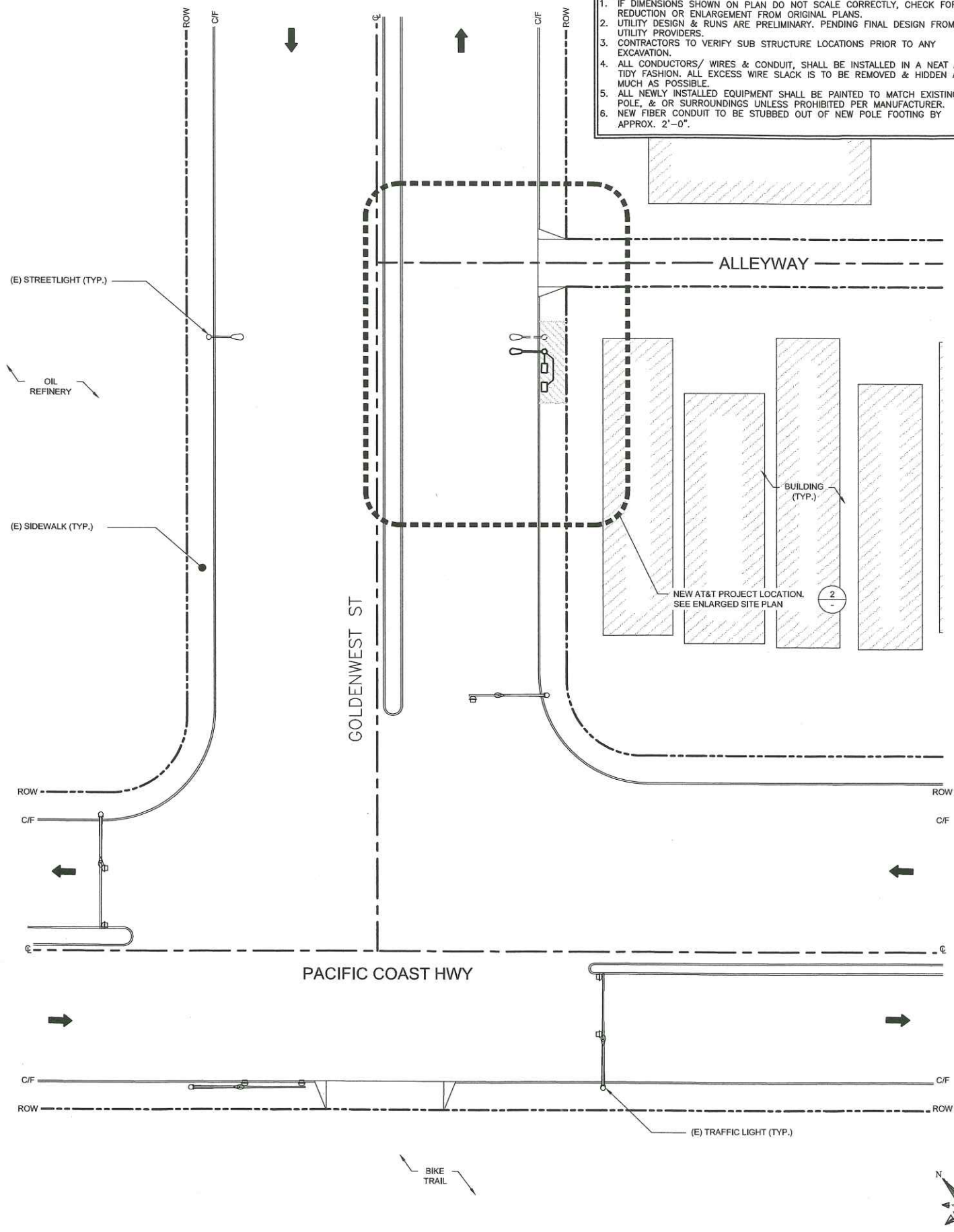
## 3

## 4





- NOTE:
1. IF DIMENSIONS SHOWN ON PLAN DO NOT SCALE CORRECTLY, CHECK FOR REDUCTION OR ENLARGEMENT FROM ORIGINAL PLANS.
  2. UTILITY DESIGN & RUNS ARE PRELIMINARY. PENDING FINAL DESIGN FROM UTILITY PROVIDERS.
  3. CONTRACTORS TO VERIFY SUB STRUCTURE LOCATIONS PRIOR TO ANY EXCAVATION.
  4. ALL CONDUCTORS/ WIRES & CONDUIT, SHALL BE INSTALLED IN A NEAT AND TIDY FASHION. ALL EXCESS WIRE SLACK IS TO BE REMOVED & HIDDEN AS MUCH AS POSSIBLE.
  5. ALL NEWLY INSTALLED EQUIPMENT SHALL BE PAINTED TO MATCH EXISTING POLE, & OR SURROUNDINGS UNLESS PROHIBITED PER MANUFACTURER.
  6. NEW FIBER CONDUIT TO BE STUBBED OUT OF NEW POLE FOOTING BY APPROX. 2'-0".



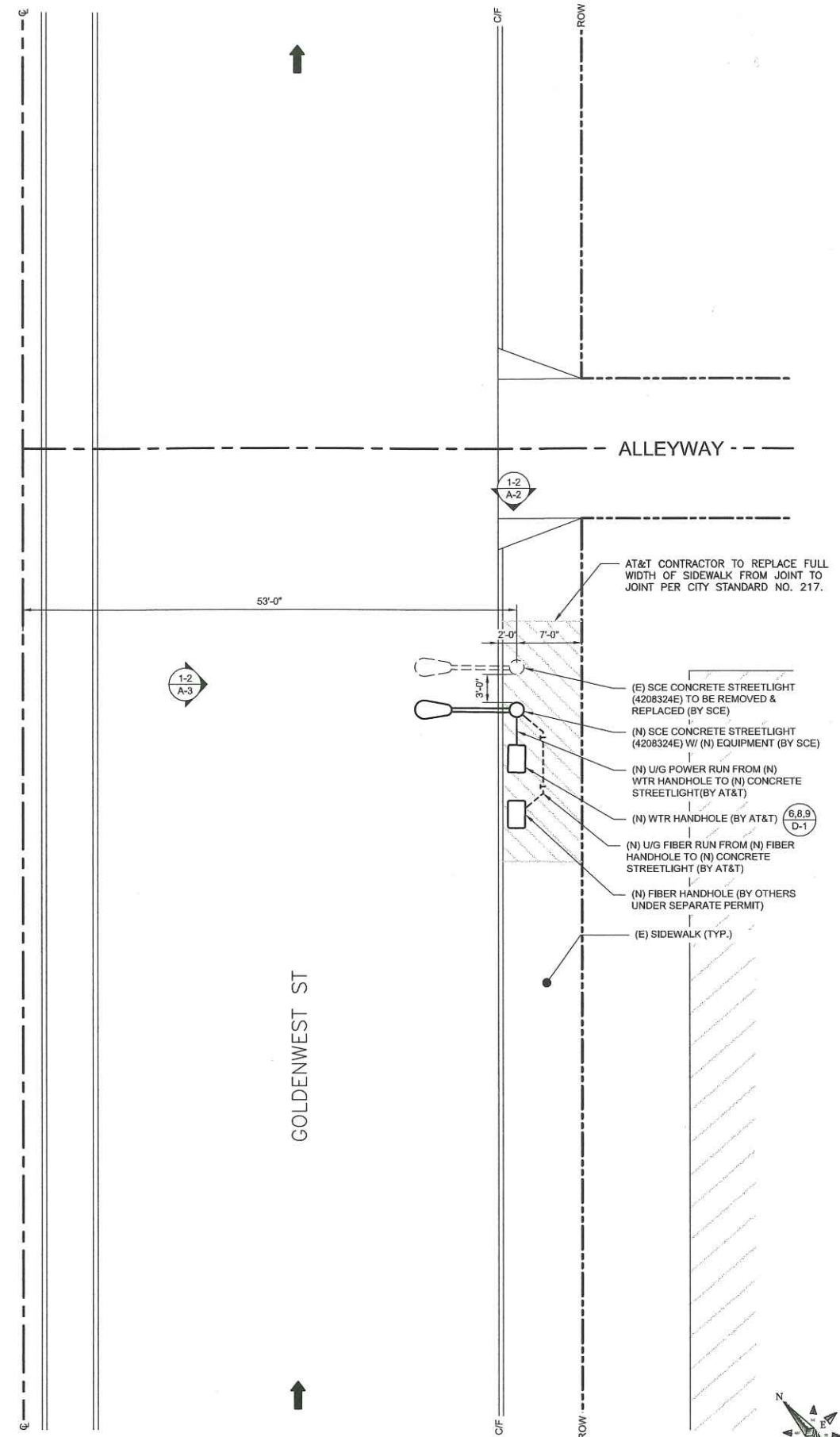
SITE PLAN

24"x36" SCALE: 1" = 20'-0"  
11"x17" SCALE: 1" = 40'-0"



1

ENLARGED SITE PLAN



24"x36" SCALE: 1/8" = 1'-0"  
11"x17" SCALE: 1/16" = 1'-0"



2



300 COMMERCE, STE. 200  
IRVINE, CA 92602



1387 GALLI AVANZADO  
SAN CLEMENTE, CA 95061-0824

DRAWN BY: EG

CHECKED BY: MM

REV	DATE	DESCRIPTION
A	01/16/2019	90% CONSTRUCTION

IT IS A VIOLATION OF LAW FOR ANY PERSON, UNLESS THEY ARE ACTING UNDER THE DIRECTION OF A LICENSED PROFESSIONAL ENGINEER, TO ALTER THIS DOCUMENT.

SITE ID: HBNPB 07B  
112 GOLDENWEST ST.  
HUNTINGTON BEACH, CA, 92648

SHEET TITLE

SITE PLAN

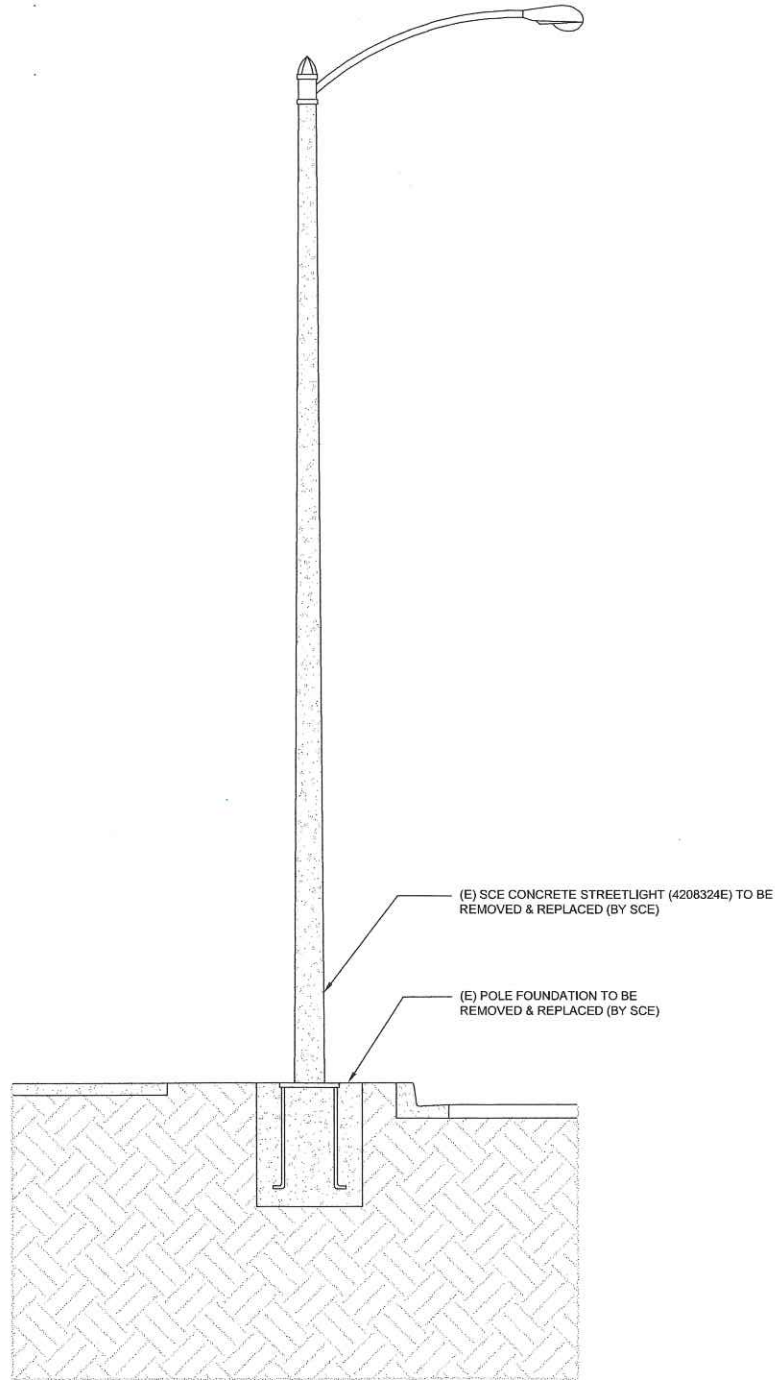
SHEET NUMBER

A-1

T/O OF (E) LUMINAIRE  
30'-6" A.G.L.

T/O OF (E) POLE  
28'-7" A.G.L.

(E) GROUND LEVEL  
0'-0" A.G.L.



NOTE:  
ALL NEW EQUIPMENT SHALL BE PAINTED  
TO MATCH NEW CONCRETE LIGHT POLE

T/O OF (N) ANTENNA  
34'-9" A.G.L.

C/L OF (N) ANTENNA  
33'-8" A.G.L.

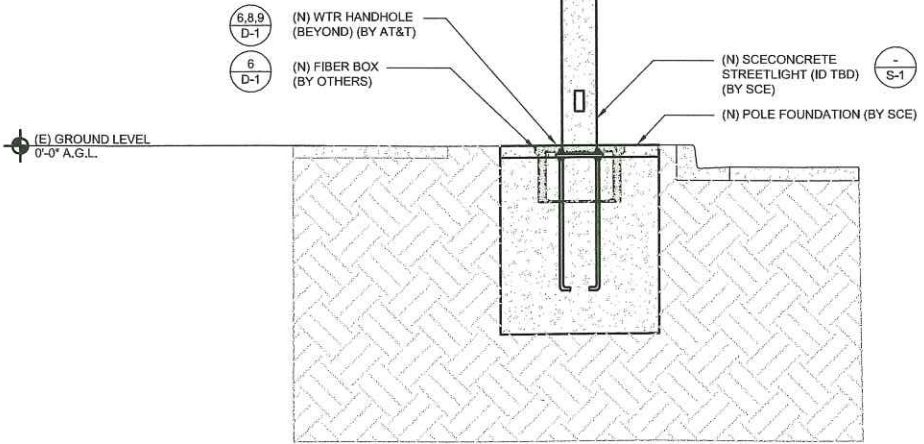
B/O OF (N) ANTENNA  
32'-8" A.G.L.

T/O OF (N) EQUIPMENT SHROUD  
32'-8" A.G.L.

T/O OF (N) LUMINAIRE  
30'-0" A.G.L.

B/O OF (N) EQUIPMENT SHROUD  
29'-3" A.G.L.

T/O OF (N) POLE  
29'-3" A.G.L.



(N) ANTENNA MOUNTED ON (N)  
EQUIPMENT SHROUD

(N) EQUIPMENT SHROUD W/ (2) (N) AT&T  
2203 RADIO, (1) (N) 2205 RADIOS (1)  
FUTURE 2205 RADIO & (1) (N) RAYCAP  
DISCONNECT SWITCH WITHIN SHROUD

EXISTING NORTHEAST ELEVATION

24"x36" SCALE: 3/8" = 1'-0"  
11"x17" SCALE: 3/16" = 1'-0"

2 NEW NORTHEAST ELEVATION

24"x36" SCALE: 3/8" = 1'-0"  
11"x17" SCALE: 3/16" = 1'-0"

1



ERICSSON  
323 COMMERCE, STE. 200  
IRVINE, CA 92602

M SQUARED  
WIRELESS  
1387 CALL AVANZADO  
844 CLEMENTE C/ 877 777 7447 761-6524

DRAWN BY: EG  
CHECKED BY: MM

REV	DATE	DESCRIPTION
A	01/16/2019	90% CONSTRUCTION

IT IS A VIOLATION OF LAW FOR ANY PERSON, UNLESS THEY  
ARE ACTING UNDER THE DIRECTION OF A LICENSED  
PROFESSIONAL ENGINEER, TO ALTER THIS DOCUMENT.

SITE ID: HBNPB 07B  
112 GOLDENWEST ST.  
HUNTINGTON BEACH, CA, 92648

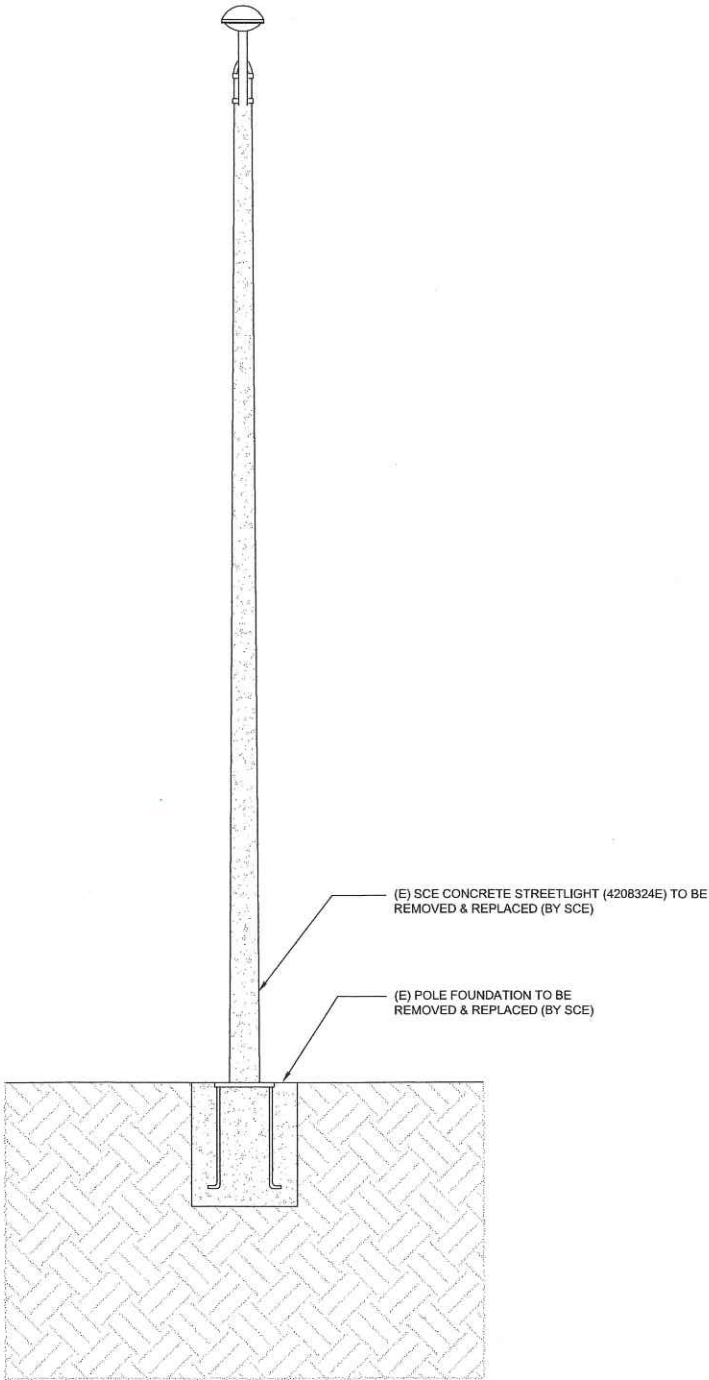
SHEET TITLE  
ELEVATIONS

SHEET NUMBER  
A-2



T/O OF (E) LUMINAIRE  
30'-6" A.G.L.

T/O OF (E) POLE  
28'-7" A.G.L.



EXISTING NORTHWEST ELEVATION

24"x36" SCALE: 3/8" = 1'-0"  
11"x17" SCALE: 3/16" = 1'-0"

NOTE:  
ALL NEW EQUIPMENT SHALL BE PAINTED  
TO MATCH NEW CONCRETE LIGHT POLE

T/O OF (N) ANTENNA  
34'-9" A.G.L.

C/L OF (N) ANTENNA  
33'-8" A.G.L.

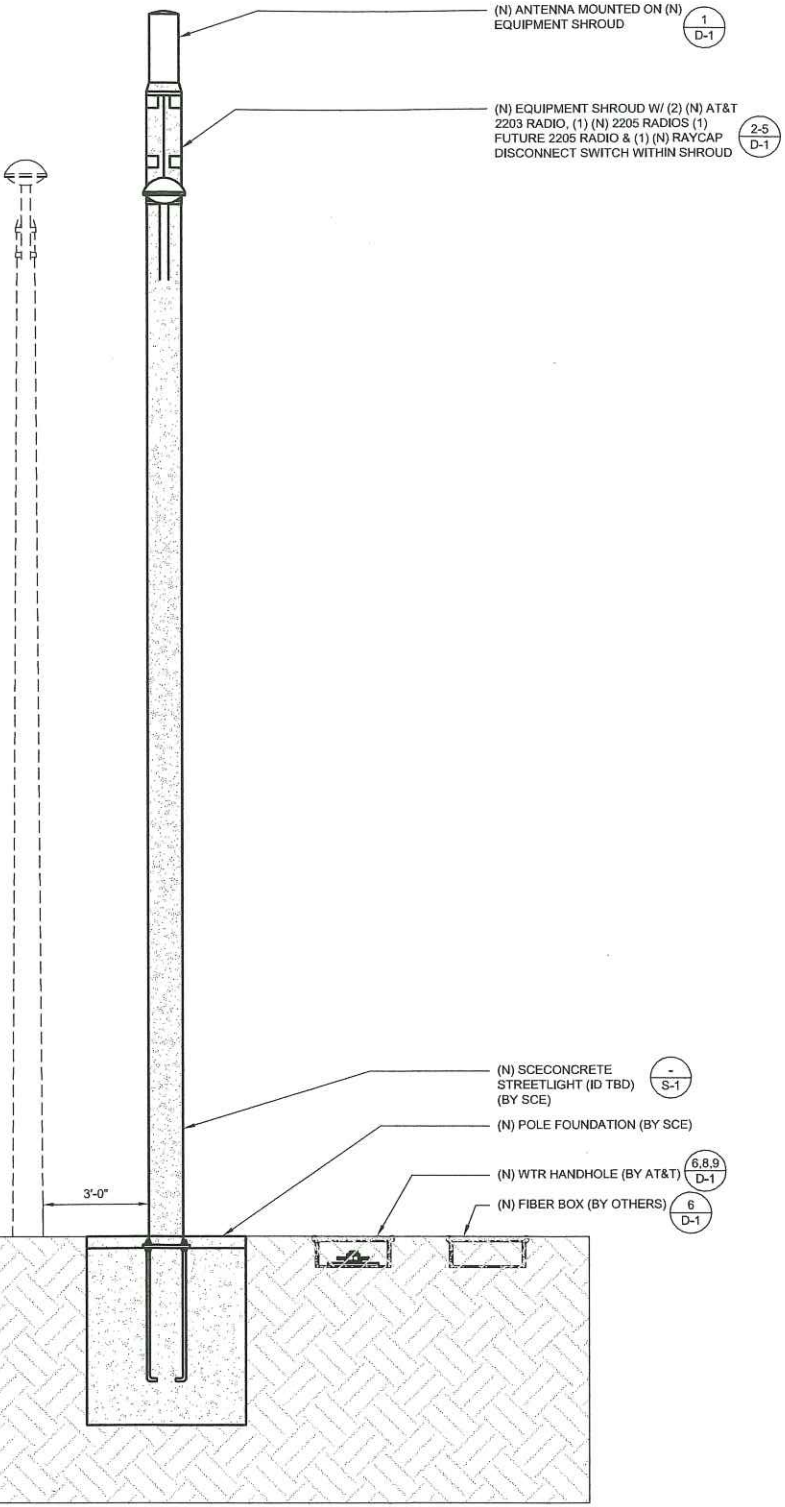
B/O OF (N) ANTENNA  
32'-8" A.G.L.

T/O OF (N) EQUIPMENT SHROUD  
32'-8" A.G.L.

T/O OF (N) LUMINAIRE  
29'-10" A.G.L.

B/O OF (N) EQUIPMENT SHROUD  
29'-3" A.G.L.

T/O OF (N) POLE  
29'-3" A.G.L.



NEW NORTHWEST ELEVATION

24"x36" SCALE: 3/8" = 1'-0"  
11"x17" SCALE: 3/16" = 1'-0"



DRAWN BY: EG  
CHECKED BY: MM

REV	DATE	DESCRIPTION
A	01/16/2019	90% CONSTRUCTION

IT IS A VIOLATION OF LAW FOR ANY PERSON, UNLESS THEY ARE ACTING UNDER THE DIRECTION OF A LICENSED PROFESSIONAL ENGINEER, TO ALTER THIS DOCUMENT.

SITE ID: HBNPB 07B  
112 GOLDENWEST ST.  
HUNTINGTON BEACH, CA, 92648

SHEET TITLE  
ELEVATIONS

SHEET NUMBER  
A-3





NEW 29'-3" POLE LOCATION (34'-9"  
OVERALL POLE HEIGHT) (RAD  
CENTER 33'-8")

PROPOSED SITE LOCATION LOOKING SOUTH



ERICSSON  
330 COMMERCE, STE. 200  
IRVINE, CA 92602



1387 CALLE AVANZADO  
SAN CLEMENTE, CA 95061 (951) 261-0524

DRAWN BY: EG

CHECKED BY: MM

A	01/16/2019	90% CONSTRUCTION
REV	DATE	DESCRIPTION

IT IS A VIOLATION OF LAW FOR ANY PERSON, UNLESS THEY  
ARE ACTING UNDER THE DIRECTION OF A LICENSED  
PROFESSIONAL ENGINEER, TO ALTER THIS DOCUMENT.

SITE ID: HBNPB 07B  
112 GOLDENWEST ST.  
HUNTINGTON BEACH, CA, 92648

SHEET TITLE

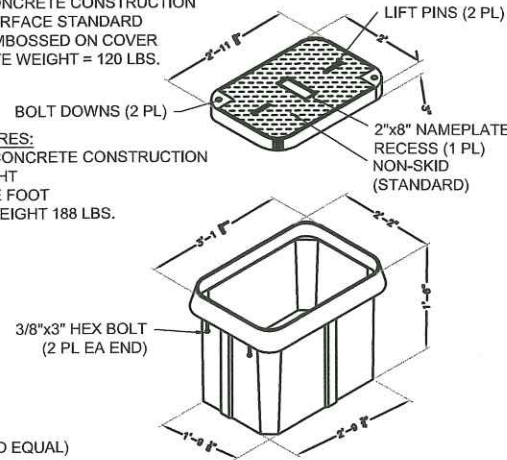
SITE IMAGE

SHEET NUMBER

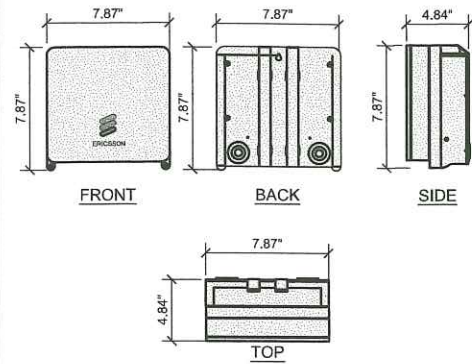
A-4



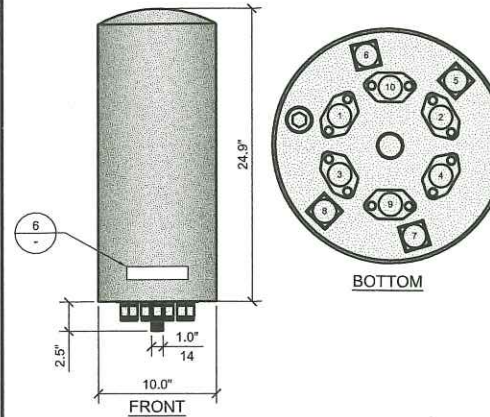
- COVER FEATURES:
- STANDARD LOAD RATING: 20,800 LBS. WHEEL LOAD ON 10"x20" PLATE
  - 2 BOLT DOWN LOCATIONS
  - STAINLESS STEEL BOX INSERTS
  - POLYMER CONCRETE CONSTRUCTION
  - NON-SKID SURFACE STANDARD
  - 20K TO BE EMBOSSED ON COVER
  - APPROXIMATE WEIGHT = 120 LBS.



- COVER FEATURES:
- POLYMER CONCRETE CONSTRUCTION
  - LIGHTWEIGHT
  - STACKABLE FOOT
  - APPROX. WEIGHT 188 LBS.



ERICSSON - MICRO RADIO 2205	
<b>MECHANICAL SPECIFICATIONS</b>	
DIMENSIONS (WxDxH):	7.87"x4.84"x7.87", INCLUDING MOUNTING BRACKET AND ESTHETIC FRONT COVER
VOLUME AND WEIGHT:	4 LITRES AND < 4 kg (8.82 lbs)
MOUNTING:	WALL AND POLE MOUNT
<b>INTERFACE SPECIFICATIONS</b>	
ANTENNA PORTS:	2 x 4.3-10(F)
CPRI:	2 x 2.5/5/10 Gbps (EXCHANGEABLE SFP MODULES)
OPTICAL INDICATORS:	6
EXTERNAL ALARM:	2
FIELD GROUND:	1
<b>ELECTRICAL SPECIFICATIONS</b>	
POWER SUPPLY:	-48 VDC OR 100-250 VAC
POWER OUTPUT:	97 WATTS MAX
MAX HEAT DISSIPATION:	90 WATTS
MINIMUM AC FUSE RATING:	6 AMP



GALTRONICS - GQ2410-06621 PSEUDO OMNI CANISTER ANTENNA	
<b>MECHANICAL SPECIFICATIONS</b>	
DIMENSIONS (HxD):	24.9 x 10 INCHES (643 x 255 mm)
WEIGHT EXCL. MOUNTING BRACKETS:	17.2lbs (8 kg)
NO. OF CONNECTORS:	10 X 4.3-10 DIN FEMALE
CONNECTOR TYPE & FREQUENCY BAND (MHz):	4 X 4.3-10 DIN FEMALE (1695-2300) MHz 4 X 4.3-10 DIN FEMALE (2650-3700) MHz 2 X 4.3-10 DIN FEMALE (5150-5950) MHz
MAX WIND SPEED:	150 mph
RADOME MATERIAL:	ASA
SHIPPING DIMS (LxWxD):	30"x19"x19" (762x483x483mm)
GROSS SHIPPING WEIGHT:	26 lbs (12kg)
PART NO. GQ2410-06621-11 (GRAY) PART NO. GQ2410-06621-011 (BROWN) PART NO. GQ2410-06621-011 (CHROME)	



## HANDHOLE

24"x36" SCALE: NTS  
11"x17" SCALE: NTS

7

## ERICSSON - RADIO 2205

24"x36" SCALE: NTS  
11"x17" SCALE: NTS

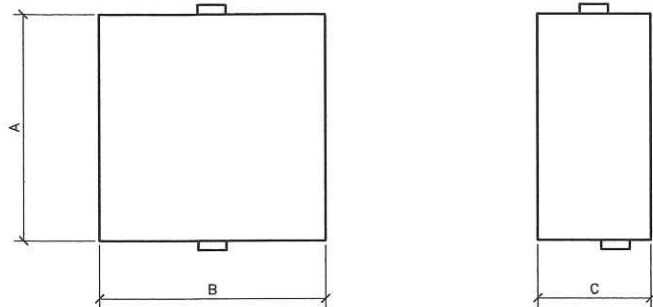
4

## GALTRONICS OMNI ANTENNA

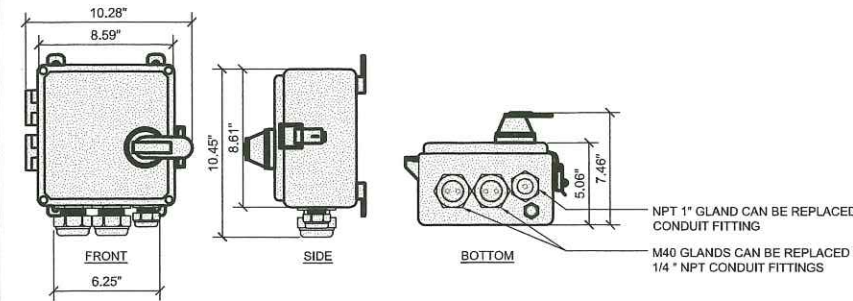
24"x36" SCALE: NTS  
11"x17" SCALE: NTS

1

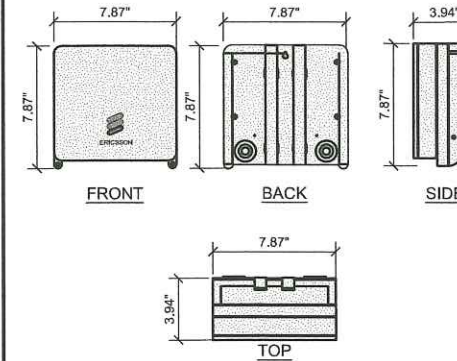
ELECTROMATE	
HINGED 3R ENCLOSURE	
<b>DIMENSIONS:</b>	
A	12"
B	12"
C	6"



RAYCAP - RSCAC-5533-P-120-D		
<b>ELECTRICAL</b>		
SURGE PROTECTION DEVICE (SPD) TYPE TO UL: STRIKESORB 30-A NUMBER OF CIRCUITS PROTECTED: 4 TYPE 2 COMPONENT ASSEMBLY SURGE PROTECTION DEVICE (SPD) CLASS TO IEC 61643-11: CLASS II NOMINAL OPERATING VOLTAGE (UN): 120 V NOMINAL DISCHARGE CURRENT (IN) PER UL 1449 4TH EDITION: 20 KA @20 MS MAXIMUM DISCHARGE CURRENT (IMAX) PER IEC 61643-11: 80 KA @20 MS MAXIMUM CONTINUOUS OPERATING VOLTAGE (MCOV): 150V VOLTAGE PROTECTION LEVEL (UP) PER IEC 61643-11: 700V VOLTAGE PROTECTION RATING (VPR): 20 KA @20 SUPPRESSION TECHNOLOGY: MOV PROTECTION MODES (DUAL MODE): LINE TO NEUTRAL, NEUTRAL TO GROUND		
<b>MECHANICAL</b>		
CONNECTION TERMINAL:	COMPRESSION LUG #6 - #14 AWG (13 - 2MM2)	
ENVIRONMENTAL INGRESS PROTECTION (IP) RATING:	NEMA 4X	
OPERATION TEMPERATURE:	(°C) -40° C TO +80° C	
STORAGE TEMPERATURE:	(°C) -70° C TO +80° C	
ENCLOSURE TYPE:	(OUTDOOR) POLYCARBONATE: UL 94V-0 RATED	
ENCLOSURE DIMENSION:	(L x W x H) 8.58" x 5.06" x 10.08"	
WEIGHT:	(217 x 158 x 255 MM) 2.25 LBS (1.02KG)	



ERICSSON - MICRO RADIO 2203	
<b>MECHANICAL SPECIFICATIONS</b>	
DIMENSIONS (WxDxH):	7.87"x3.94"x7.87", INCLUDING MOUNTING BRACKET AND ESTHETIC FRONT COVER
VOLUME AND WEIGHT:	4 LITRES AND < 4.5 kg (9.92 lbs)
MOUNTING:	WALL AND POLE MOUNT
<b>INTERFACE SPECIFICATIONS</b>	
ANTENNA PORTS:	2 x 4.3-10(F)
CPRI:	2 x 2.5/5/10 Gbps (EXCHANGEABLE SFP MODULES)
OPTICAL INDICATORS:	6
EXTERNAL ALARM:	2
FIELD GROUND:	1
<b>ELECTRICAL SPECIFICATIONS</b>	
POWER SUPPLY:	-48 VDC OR 100-250 VAC
POWER OUTPUT:	97 WATTS MAX
MAX HEAT DISSIPATION:	90 WATTS
MINIMUM AC FUSE RATING:	6 AMP



## SCE UN-METERED FUSED PANEL

24"x36" SCALE: NTS  
11"x17" SCALE: NTS

8

## RAYCAP DISCONNECT

24"x36" SCALE: NTS  
11"x17" SCALE: NTS

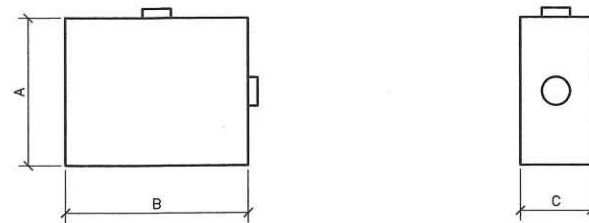
5

## ERICSSON - RADIO 2203

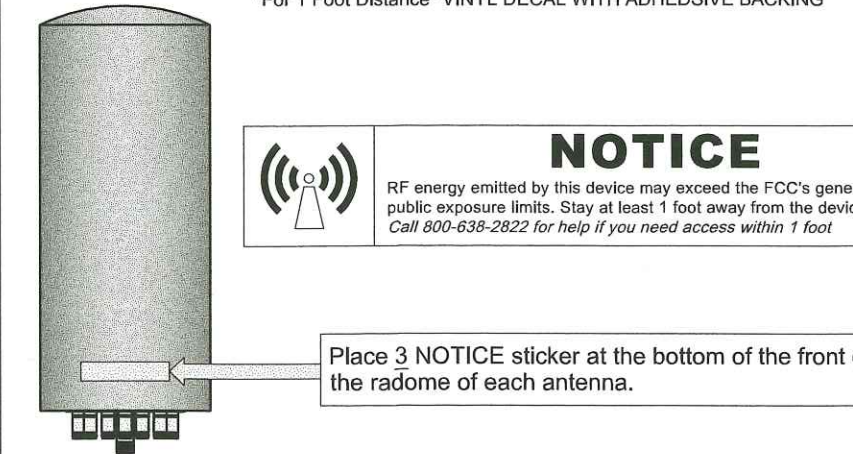
24"x36" SCALE: NTS  
11"x17" SCALE: NTS

2

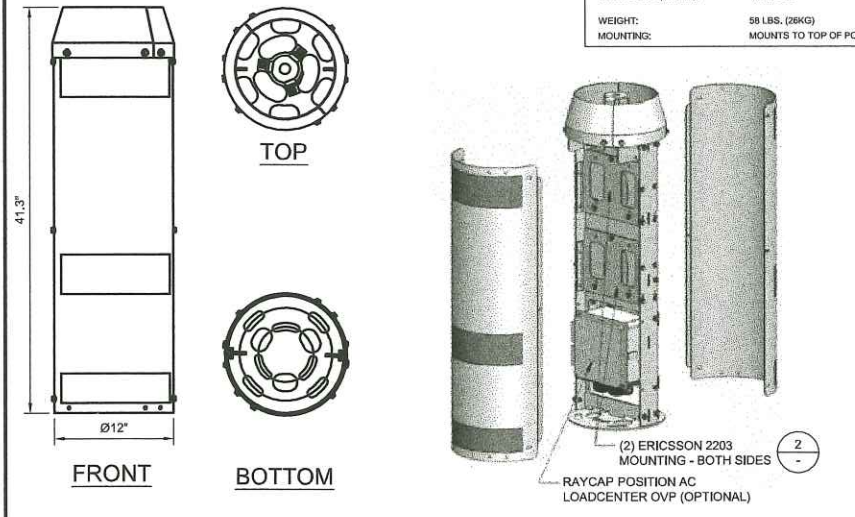
SQUARE-D	
HINGED 3R ENCLOSURE # D221NRB	
<b>DIMENSIONS:</b>	
A	7.75"
B	9.63"
C	3.75"



AVAILABLE FROM EXCEL SIGN AND DECAL:  
<http://www.weneedsigns.com/home.php?cal+1135> AND CLICK ON AT&T  
PH: 510-651-0445  
N01-DC-16 1"x6" NOTICE DECAL  
"For 1 Foot Distance" VINYL DECAL WITH ADHESIVE BACKING



COMMSCOPE SCC-760236000	
<b>MECHANICAL SPECIFICATIONS</b>	
DIMENSIONS (WxDxH):	41.3"x8.12"
WEIGHT:	58 LBS. (26KG)
MOUNTING:	MOUNTS TO TOP OF POLE



IT IS A VIOLATION OF LAW FOR ANY PERSON, UNLESS THEY ARE ACTING UNDER THE DIRECTION OF A LICENSED PROFESSIONAL ENGINEER, TO ALTER THIS DOCUMENT.

SITE ID: HBNPB 07B  
112 GOLDENWEST ST.  
HUNTINGTON BEACH, CA, 92648

SHEET TITLE  
DETAILS

SHEET NUMBER  
D-1

## AT&T MOBILITY FUSED DISCONNECT

24"x36" SCALE: NTS  
11"x17" SCALE: NTS

9

## OMNI ANTENNA DISCLAIMER LABEL

24"x36" SCALE: NTS  
11"x17" SCALE: NTS

6

## EQUIPMENT SHROUD

24"x36" SCALE: NTS  
11"x17" SCALE: NTS

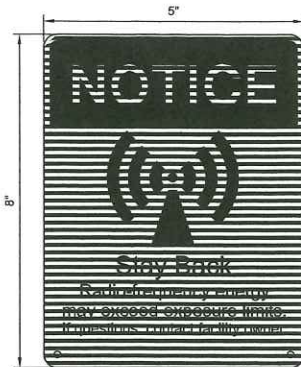
3





OWNER / OPERATOR NOTE:  
SITE ID LABEL TO BE AFFIXED AT OR NEAR THE POINT OF POWER CONNECTION WITH TZeS241 LABELING TAPE OR EQUIVALENT BLACK ON WHITE LABELING TAPE OF AT LEAST 18mm WIDTH WITH EXTRA-STRENGTH ADHESIVE. USE ANY COMPATIBLE P-TOUCH LABEL MAKER. TEXT SHOULD BE PRINTED IN ALL CAPS WITH A MINIMUM HEIGHT OF 1/2".

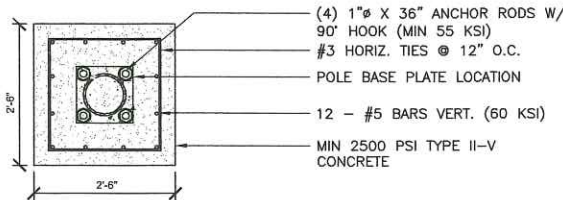
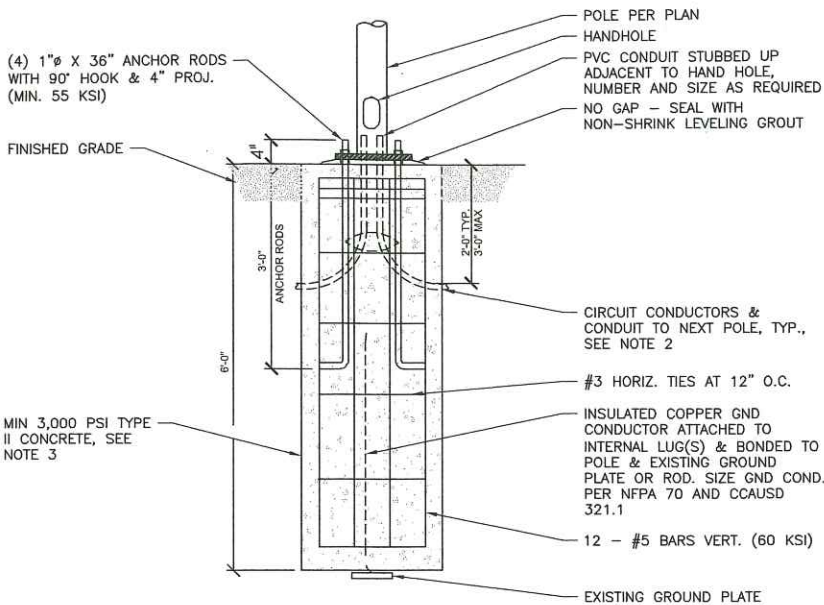
EMERGENCY CONTACT SIGN



ANTENNA SIGNAGE:  
ON WOOD POLES - SIGN ON ALUMINUM WITH SS SCREW TO THE POLE  
ON METAL POLES - ADHESIVE VINYL OR PLACARD STRAPPED WITH SS TIES  
ON CONCRETE / COMPOSITE - PLACARD STRAPPED WITH SS TIES  
SIGN PLACEMENT:  
AFFIX TO THE STRUCTURE 3-4' BELOW THE COMMERCIAL RF ANTENNA(S)  
SIZE ANTENNA: 8" x 5"

ANTENNA SIGNAGE

- NOTES:
- THIS INFORMATION MAY NOT CONTAIN ALL DETAILS REQUIRED FOR CONSTRUCTION. APPROPRIATE MODIFICATION MAY BE REQUIRED TO ENSURE SUITABILITY OF THESE DRAWINGS FOR THE SPECIFIC APPLICATION.
  - FOR FIBER CONDUIT, STUB OUT FROM FOUNDATION AWAY FROM STREET SIDE FOR FUTURE FIBER HANDHOLE INSTALLATION.
  - WHERE KNOWN HIGH SULFATE CONTENT EXISTS IN SOIL, USE TYPE V CEMENT.



NOT USED

24"x36" SCALE: NTS  
11"x17" SCALE: NTS

5

POLE MOUNTED SIGNS

24"x36" SCALE: NTS  
11"x17" SCALE: NTS

3

NEW FOUNDATION

24"x36" SCALE: NTS  
11"x17" SCALE: NTS

1

NOT USED

24"x36" SCALE: NTS  
11"x17" SCALE: NTS

6

NOT USED

24"x36" SCALE: NTS  
11"x17" SCALE: NTS

4

TRENCH DETAIL

24"x36" SCALE: NTS  
11"x17" SCALE: NTS

2



J30 COMMERCE, STE. 200  
IRVINE, CA 92612



1387 CALLE AVANZADO  
SAN GABRIEL, CA 91761-0001

DRAWN BY: EG

CHECKED BY: MM

A	01/16/2019	90% CONSTRUCTION
REV	DATE	DESCRIPTION

IT IS A VIOLATION OF LAW FOR ANY PERSON, UNLESS THEY ARE ACTING UNDER THE DIRECTION OF A LICENSED PROFESSIONAL ENGINEER, TO ALTER THIS DOCUMENT.

SITE ID: HBNPB 07B  
112 GOLDENWEST ST.  
HUNTINGTON BEACH, CA, 92648

SHEET TITLE

DETAILS

SHEET NUMBER

D-2





ERICSSON  
330 COMMERCE, 3TC, 200  
IRVINE, CA 92602



387 CALLE AVANZADO  
SAN CLEMENTE, CA 95060 (408) 291-0034

DRAWN BY: EG

CHECKED BY: MM

REV	DATE	DESCRIPTION
A	01/16/2019	90% CONSTRUCTION

IT IS A VIOLATION OF LAW FOR ANY PERSON, UNLESS THEY ARE ACTING UNDER THE DIRECTION OF A LICENSED PROFESSIONAL ENGINEER, TO ALTER THIS DOCUMENT.

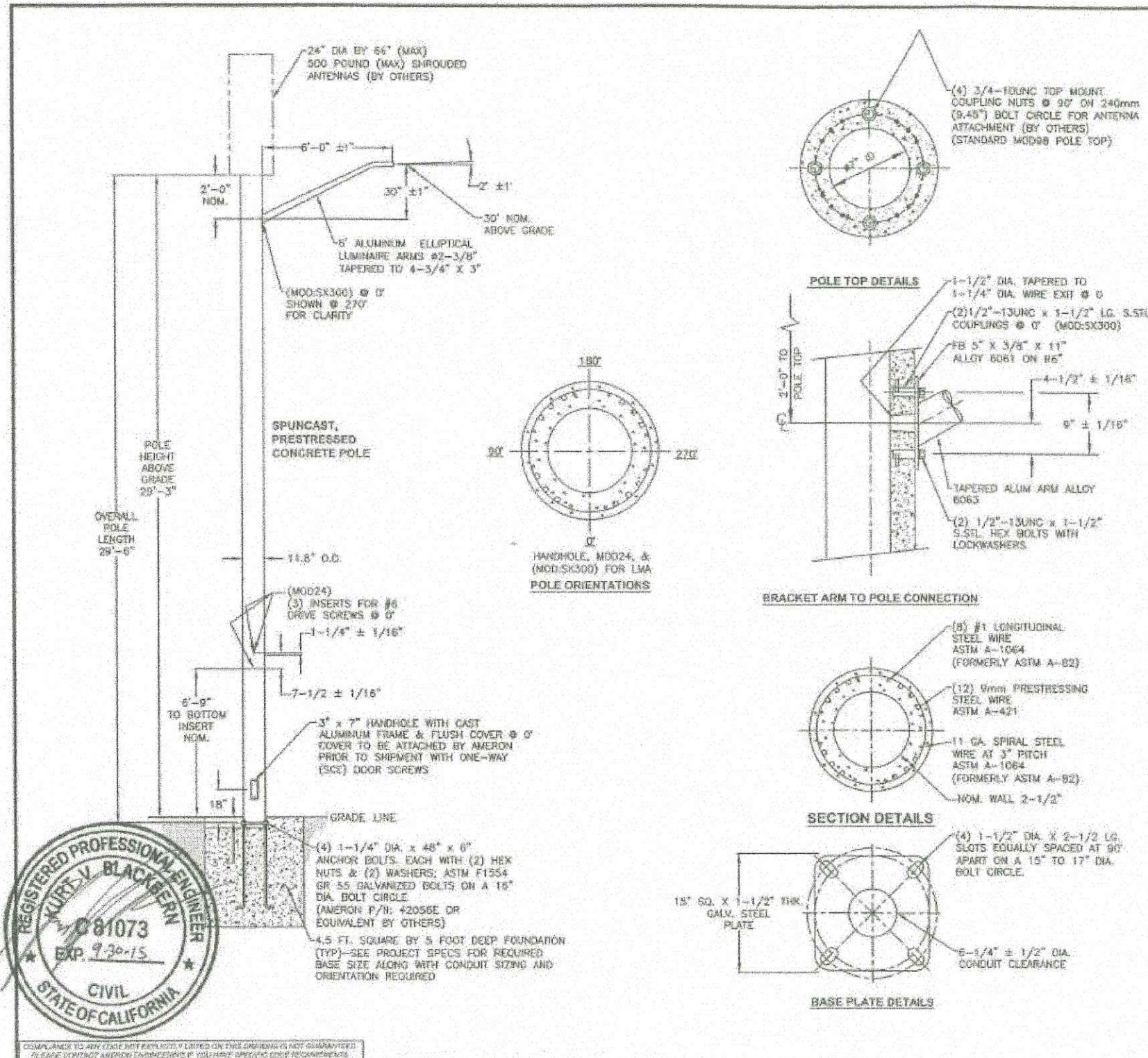
SITE ID: HBNPB 07B  
112 GOLDENWEST ST.  
HUNTINGTON BEACH, CA, 92648

SHEET TITLE

POLE DETAILS

SHEET NUMBER

S-1



REV.	DATE	DESCRIPTION	DRN.	APPR.
A	09/07	REDRAWN, ADDED POLE P/N	A.C.	
B	05/08	UPDATED FOR ORACLE	T.L.	
C	02/10	A/B WERE A36M55, NOW A307	J.C.	
D	06/15	UPDATED TO NEW DWG. STDS.	L.P.	

"F" LEVEL CONFIG CODES			"P" LEVEL CONFIG CODES		
OPTION CLASS	ENTRY	INFO.	OPTION CLASS	ENTRY	INFO.
COATING	S		MIX	B1	
HH COVER	66546E		FINISH	5	
DOOR SCRS	SCE		BASEPLATE	63250E	
DRILL IN MOD	MOD24		COLLAR	NONE	
			POLE TOP CON.	MOD98	
			CAST-IN MOD	MOD5X300	

300MM NON-TAPERED BASE PLATE ROUND POLE

POLE DESIG- NATION	POLE HEIGHT ABOVE GRADE	OVERALL POLE LENGTH	BOLT CIRCLE	BASE O.D.	ULTIMATE G.L. MOMENT (ft.-lbs.)	POLE WEIGHT (lbs.)
BP300X09	29'-3"	29'-6"	16"	11-13/16"	65,000	2900

(1) POLES REQUIRED (P/N: BP300X09-16137), EACH WITH 6' WALL BRACKET  
ELLIPTICAL ARM (P/N: LAE66A)

- NOTES:
- MIX (815S): SCE BLACK & WHITE, LIGHTLY EXPOSED AGGREGATE FINISH WITH FLAT WATER SEALER COATING.
  - ASTM C-150 TYPE III GRAY CEMENT.
  - Fc @ 28 DAYS=7,000 PSI, USING SPUN CYLINDER TEST.
  - Fc @ 28 DAYS=5,000 PSI, USING ASTM C-31 CYLINDER TEST.
  - POLES MANUFACTURED TO ASTM C-1089-13 SPECIFICATIONS.
  - PROTECTIVE COAT EXPOSED P.C. WIRES AT POLE ENDS.
  - THE POLE DEPICTED ON THIS DRAWING IS DESIGNED TO WITHSTAND THE LOADS IMPARTED BY A SINGLE SIDE MOUNTED TAPERED ELLIPTICAL ALUMINUM ARM (NOT TO EXCEED 6' OFFSET, 3.7 SQ. FT. EPA, 25 LBS.) WITH THE ARM HOLDING A DOWNWARD FACING AREA OR PENDENT LUMINAIRE (NOT TO EXCEED 2.0 SQ. FT. EPA, 50 POUNDS); THE POLE ALSO SUPPORTS (1) ANTENNA SHROUD CENTERED 3' ABOVE THE POLE TOP (NOT TO EXCEED 6.3 SQ. FT. EPA, 225 LBS. MAX) AS DESIGNED PER THE 2013 AASHTO LTS-6 (CRITERIA FOR STREET LIGHTING POLES), 2010 CALIFORNIA BUILDING CODE & ASCE7-05 FOR 90 MPH WIND AND SEISMIC ZONE (3-SECOND GUSTS) & SEISMIC CRITERIA Ss=1.75 & S1=0.6. PLEASE CONTACT & ADVISE AMERON ENGINEERING IF THE INTENDED VALUES EXCEED THESE VALUES.
  - DUE TO THE NATURE & CHARACTERISTICS OF CONCRETE, SIDE MOUNT SPACING DIMENSIONS CAN ONLY BE TAKEN TO THE NEAREST 1/8 INCH.

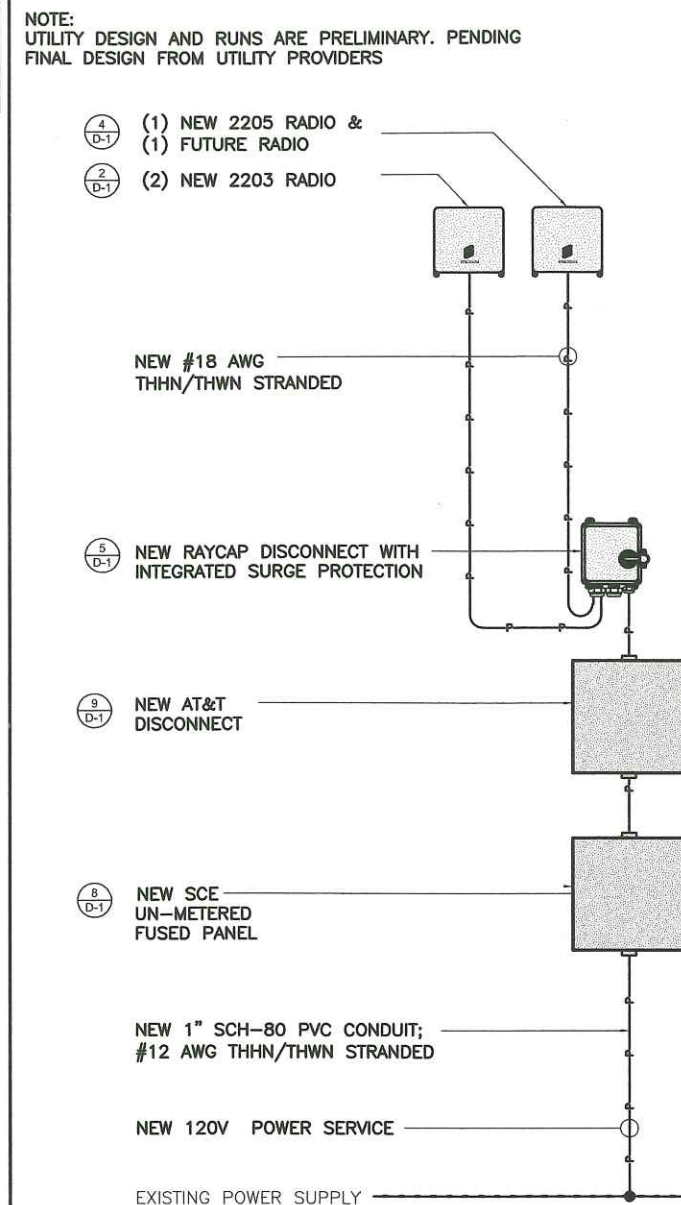
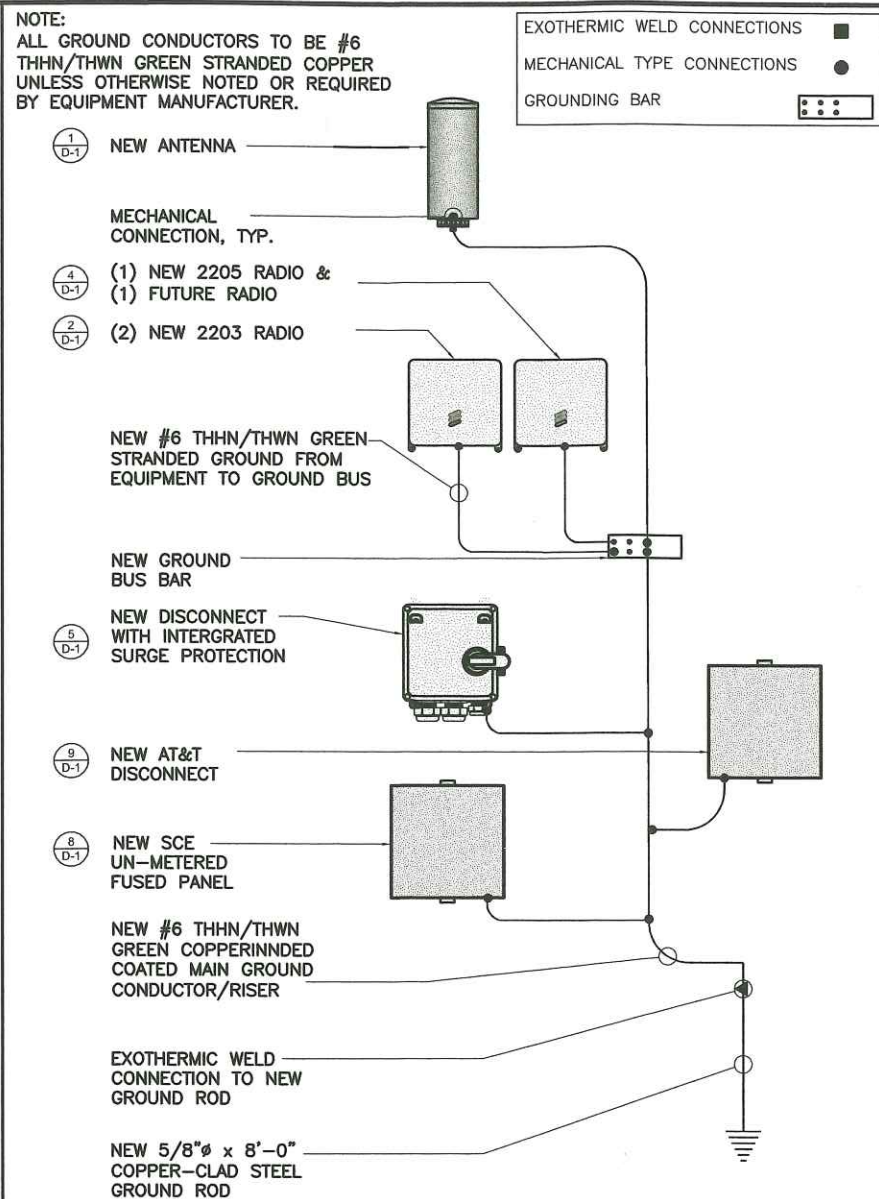
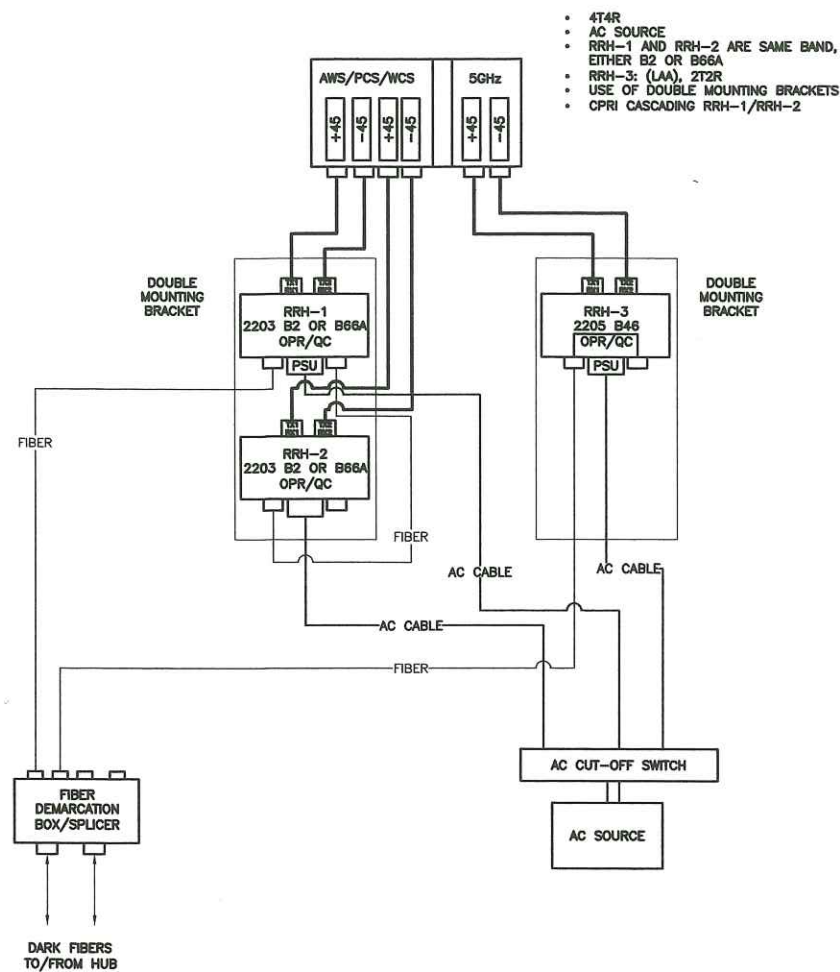
APPROVED BY DATE

SOUTHERN CALIFORNIA EDISON  
BP300X09 POLE WITH SINGLE 6' ARM

THIS DOCUMENT CONTAINS INFORMATION WHICH IS PROPRIETARY TO AMERON. IT SHALL NOT BE REPRODUCED, USED OR DISCLOSED TO ANYONE WITHOUT THE PRIOR WRITTEN PERMISSION OF AMERON.

AMERON POLE PRODUCTS	DRAWN: SJB	DATE: 10/2003	REV
	SCALE: N.T.S.	DWG. NO. 040-01277	





PICO PLUMBING DIAGRAM

24"x36" SCALE: NTS  
11"x17" SCALE: NTS

5

GROUNDING SCHEMATIC

24"x36" SCALE: NTS  
11"x17" SCALE: NTS

3

SINGLE LINE DIAGRAM

24"x36" SCALE: NTS  
11"x17" SCALE: NTS

1

NOT USED

24"x36" SCALE: NTS  
11"x17" SCALE: NTS

6

NOT USED

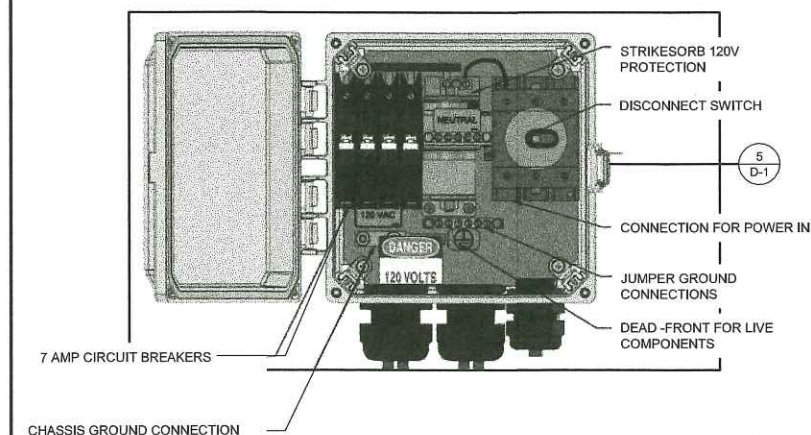
24"x36" SCALE: NTS  
11"x17" SCALE: NTS

4

BREAKER SCHEDULE

24"x36" SCALE: NTS  
11"x17" SCALE: NTS

2



DRAWN BY: EG  
CHECKED BY: MM

REV	DATE	DESCRIPTION
A	01/16/2019	90% CONSTRUCTION

IT IS A VIOLATION OF LAW FOR ANY PERSON, UNLESS THEY ARE ACTING UNDER THE DIRECTION OF A LICENSED PROFESSIONAL ENGINEER, TO ALTER THIS DOCUMENT.

SITE ID: HBNPB 07B  
112 GOLDENWEST ST.  
HUNTINGTON BEACH, CA, 92648

SHEET TITLE  
ELECTRICAL DETAILS

SHEET NUMBER  
E-1

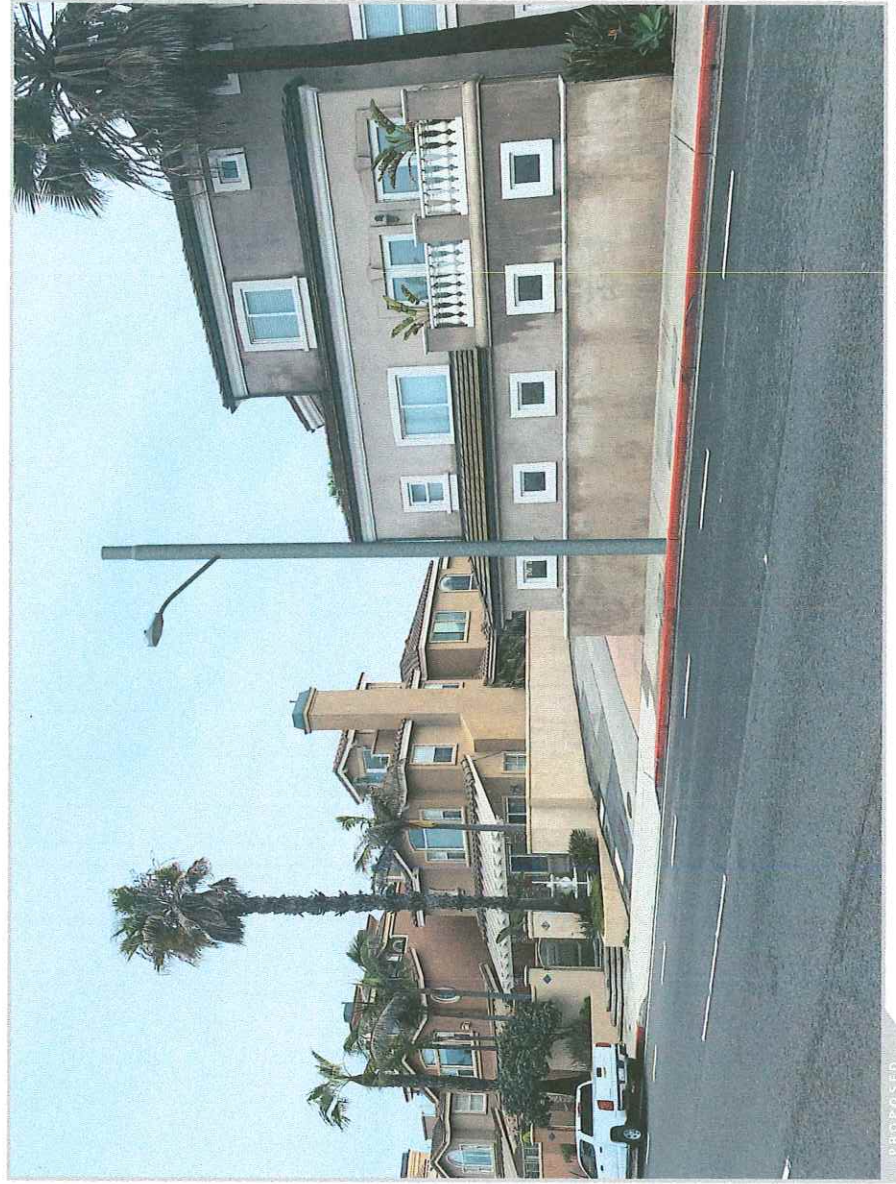
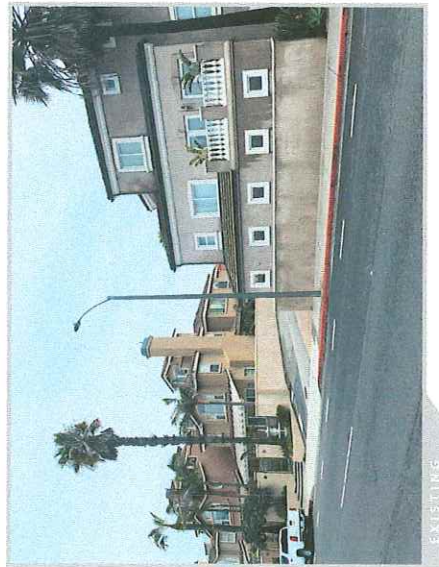


# CRAN\_RLOS\_HBNPB\_007

HBNPB 07B



112 GOLDENWEST ST HUNTINGTON BEACH, CA 92648



VIEW 3 | LOOKING NORTHEAST

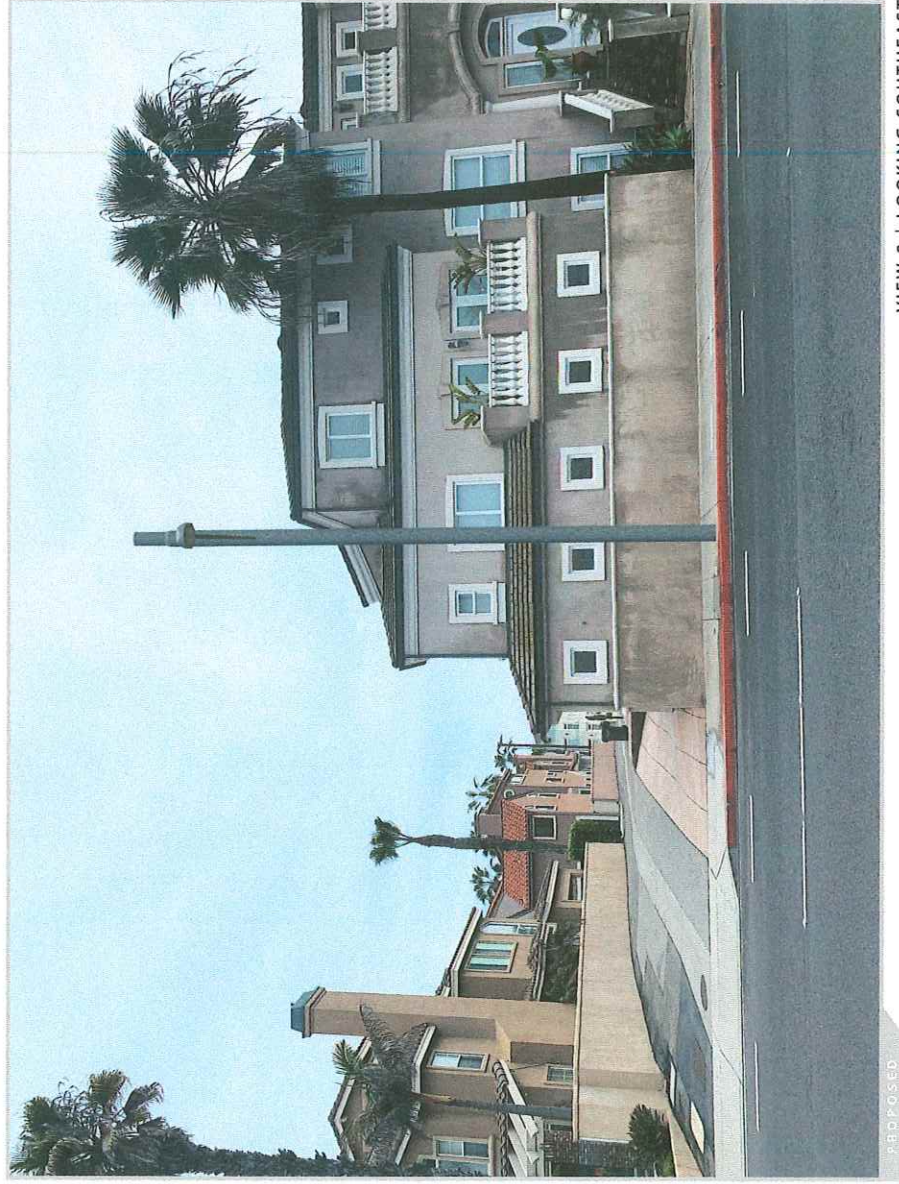
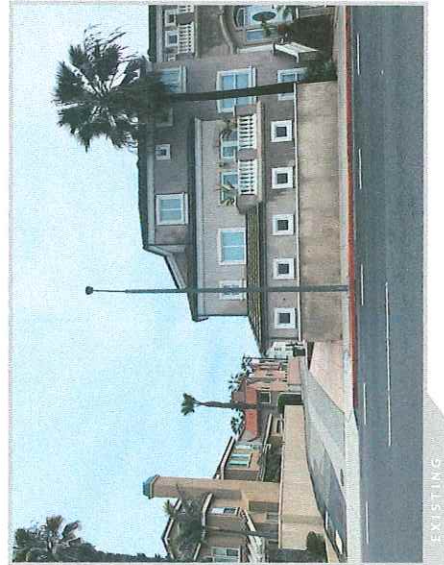


# CRAN\_RLOS\_HBNPB\_007

HBNPB 07B



112 GOLDENWEST ST HUNTINGTON BEACH, CA 92648



VIEW 2 | LOOKING SOUTHEAST

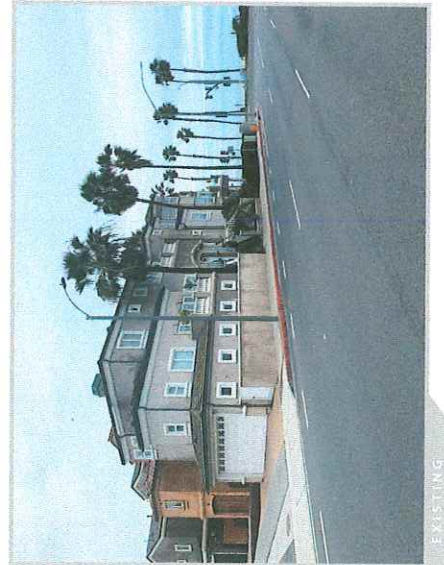


# CRAN\_RLOS\_HBNPB\_007

HBNPB 07B



112 GOLDENWEST ST HUNTINGTON BEACH, CA 92648



VIEW 1 | LOOKING SOUTH



