

Huntington Beach Police Department Temporary Use of Rodger's Senior Center



Chief Rob Handy
August 15, 2019

HBPD Headquarters Building

- Built in 1972/73
 - Move in 1974 with 140 sworn officers
 - No female officers
- The PD is a 24/7 operation and has more use than like facilities at City Hall
- No major infrastructure remodel/replacement
 - Still using much of the original furniture
 - We have run out of locker space for both men and women
 - 2 Communications Operators must work from an adjacent room

HBPD Headquarters Building

- Numerous repair and maintenance issues
 - Plumbing and HVAC are a constant problem
 - contract plumbers called in sometimes weekly during summer/high use months
 - 14 floor fans in men's' locker room to assist
- Outdated facility does not meet current needs for staff
 - Management Partners identified building condition to be a major concern for employees (Recommendation #9)

Congested Work Spaces





DAILY FLOW OF POLICE/STAFF

- CURRENT LAYOUT IS INEFFICIENT
- NEED FOR IMPROVED FLOW BETWEEN SPACES



COMMUNICATIONS ROOM

- DARK, UNPLEASANT WORKSPACE
- NO BREAK AREA OR DIRECTOR'S OFFICE



LOCKER ROOMS

- NO FULL-SIZE WOMEN'S LOCKER ROOM
- CURRENT LOCKER COUNT NOT ENOUGH

CORRIDORS

- TOO NARROW IN HIGH-VOLUME AREAS



BRIEFING/TRAINING ROOMS

- INEFFICIENT LAYOUT, NOT PRACTICAL FOR BRIEFINGS AND TRAINING SESSIONS



ARMORY/SWAT ARMORY

- EXISTING SPACES TOO SMALL TO MEET NEEDS
- POOR FLOW IN CURRENT SPACES



EXERCISE ROOM

- TOO SMALL FOR CURRENT NEED
- USED BY BOTH POLICE AND CITY HALL

EXISTING CONDITIONS AND ISSUES - 1971 BUILDING

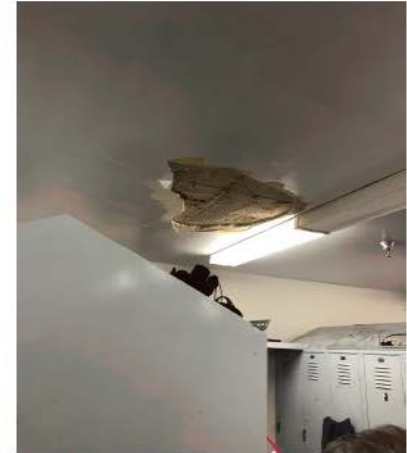
Current Condition in the Locker Rooms



WOMEN'S LOCKERS - TOO SMALL, BAD LOCATION



MEN'S LOCKER ROOM - OUTDATED, POOR VENTILATION, TOO SMALL



DAMAGED FINISHES - REPAIRS NEEDED



WOMEN'S LOCKERS - TOO SMALL, BAD LOCATION



NO ADA ACCESS IN CURRENT RESTROOMS



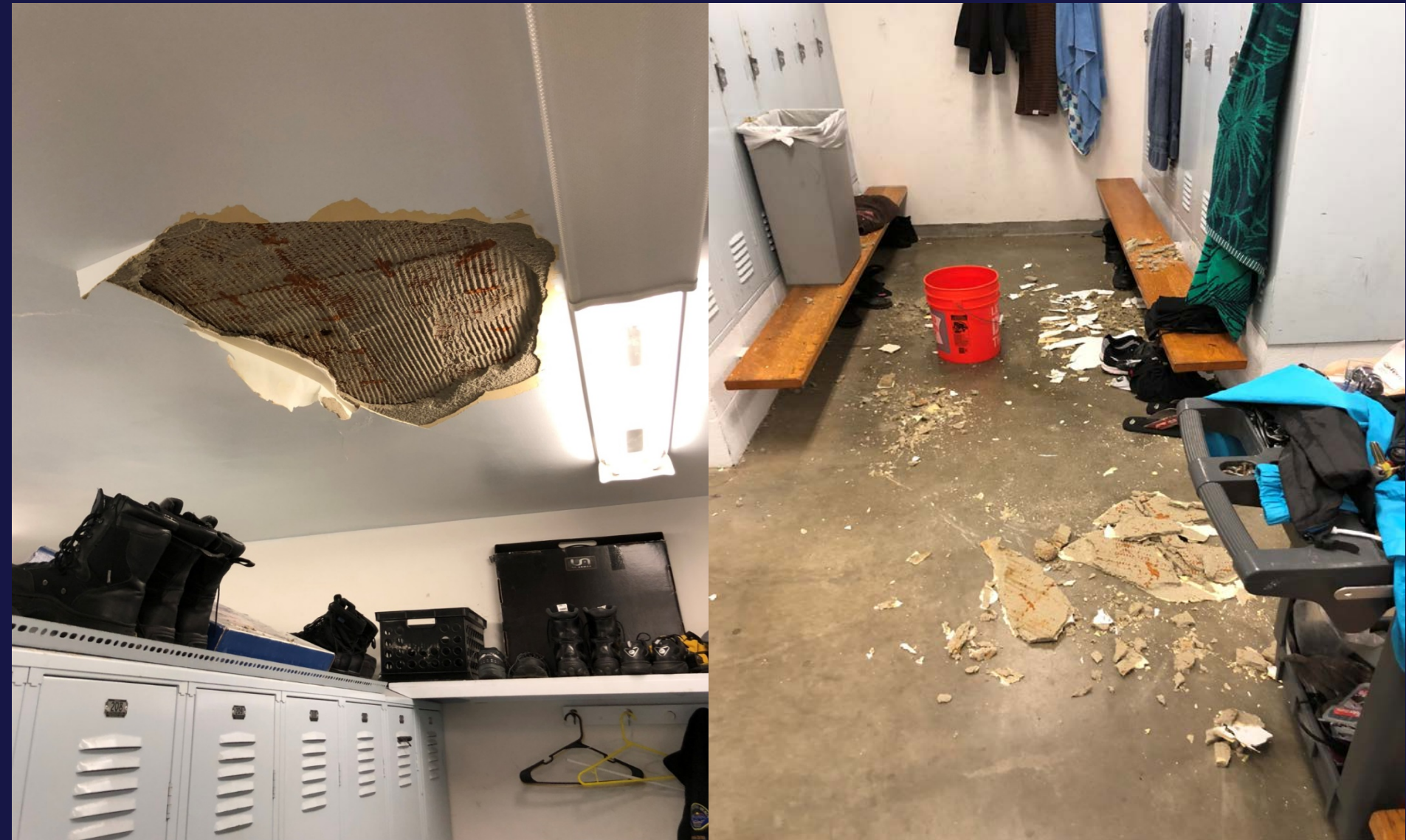
EXISTING RESTROOMS ARE OUTDATED

EXISTING CONDITIONS AND ISSUES - 1971 BUILDING - LOCKERS AND RESTROOMS

Heavily Used and Overcrowded Lockers



Locker Room Ceiling Issue



Restroom Plumbing



Women's Facility - 98 Employees



Overcrowded
locker room



Two showers



Two sinks / One
counter

WestbergWhite Architecture & Erickson - Hall Construction

- Hired to do evaluation of existing building
- More cost effective to modernize
- Major infrastructure repairs
 - HVAC
 - Plumbing
- Facility design and cost estimation

Modern Facilities



TRAINING/ EXERCISE ROOM



BREAK ROOM



ARMORY



BRIEFING ROOM



LOCKER ROOM



CONFERENCE ROOM

Additional Department Facilities

- Oakview Substation
 - Limited Space/Parking
- Downtown Substation
 - SET Team
 - HTF Team
- Bella Terra Substation
 - Possibly used by SIB Detectives

Potential Use of Rodger's Senior Center

- Patrol Bureau
 - 96 Officers, 10-20 at one time
 - 80 Patrol/Staff Vehicles Parked at Location
- Traffic Bureau
 - 18 Officers
- CSO/CSI
 - 6 Officers
- Training Bureau
 - 2 Officers, 2 Support Staff, 6 Cadets

Possible Impact of using Rodger's Senior Center

- 24/7 Building Use
 - Limited Public Business
 - No Arrestee Housing
- Parking – Public Parking Restricted
- Noise Mitigation Efforts

QUESTIONS?

