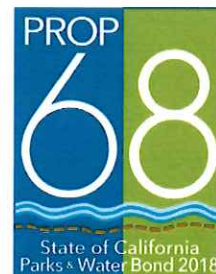


Enhancing Our Parks

Proposition 68 Competitive Funding Opportunities

City Council
Study Session
July 15, 2019



SUPPLEMENTAL COMMUNICATION

Meeting Date: 7-15-2019

Agenda Item No.: 1 (19-782)

Proposition Overview

- June 2018, State passed Proposition 68 – which includes a Statewide Park Development and Community Revitalization Program. (SPP)
- First Major Park Bond since 2002 (Proposition 40)
- Total Funding available = \$650,275,000
- Funding for 2019 = \$254,942,000 (Timing of future rounds TBD)
- Program eligible to Cities, Counties, Parks & Recreation Districts, Joint Powers Authorities and Non-Profit (501©(3) status)
- No Funding Match Required
- Aggressive Timeline

Schedule of Key Dates

- June 2018 – Voter Approval of Proposition 68
- October – December 2018 – Preparation of Draft Application Guide
- January 22, 2019 – Grant Application Guide Finalized
- February – March 2019 – Application Workshops
- August 5, 2019 – Applications Due to State
- End of 2019 – Grants Awarded
- March, 2022 –Project Completion

PROJECT ELGIBILITY

- Project must involve development or combination of acquisition and development of a new park, expansion of an existing park or, renovation of an existing park
- Projects must create or renovate at least one “Recreation Feature”: typical park amenities such as ballfields, tot lots, jogging/walking paths.
- Stand alone support amenities such as restrooms, landscaping or lighting not tied to an overall project are ineligible

GRANT CRITERIA

Project **Selection** Criteria – Four Categories:

- 1.) Project Location – Projects must be located in areas lacking open space (Parks within an area having 3 or less acres/1,000 residents **OR** communities with median household income below \$51,026) based on **Project FactFinder**
All projects are ranked on a statewide level in terms of park acreage - with those with lowest ranking receiving the highest point total
- 2.) Community Engagement – Community based planning (workshops, community outreach)
- 3.) Operation and Maintenance Considerations – Environmental design, site accessibility
- 4.) Summary of Project Need, Benefits and Readiness – Community challenges, benefits, readiness

Huntington Beach Eligibility

Lack of Open Space – Of the City's 78 parks, 37 do not meet the criteria of 3 acres or less per 1,000 residents within a half mile radius of a park.

Significant Poverty – Only one section of the City falls under the statewide median household income threshold of \$51,026 and that is Oak View Park

Proposed Park Sites

Proposed Park Enhancement Projects - Based on:

- Grant criteria for eligible projects
- Needed park improvements identified in the City Council approved Parks & Recreation Master Plan and the Playground Equipment Replacement Priority List
- Projects with similar needs to save both time and funds to prepare the grants. Each park has to be a separate grant submittal

Selected Parks

Carr Park



Drew Park



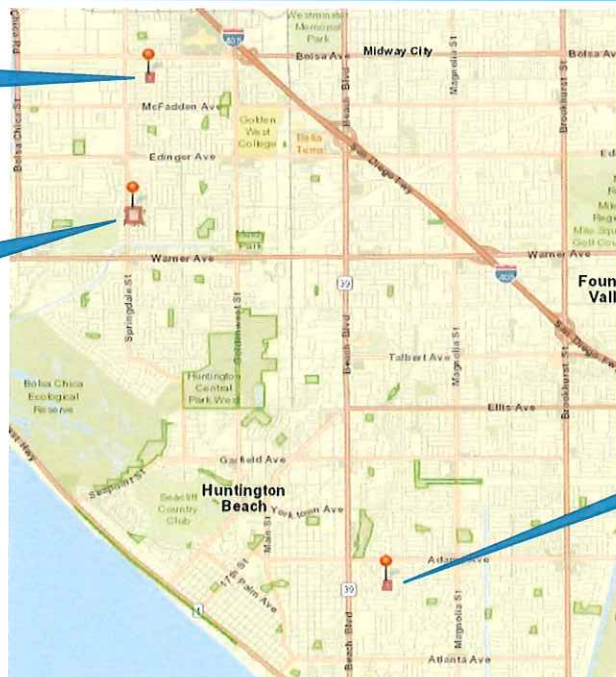
Schroeder Park



Location Map

Schroeder
Park

Carr Park



Drew Park

Carr Park - Site Characteristics and Needs

CARR PARK – 10.72 acres, S/E Corner of Springdale St. and Heil Ave

- Constructed in 1972
- Amenities include open turf area, walking path, tot lot and fishing pond with small island
- Picnic tables and benches

NEEDS/ISSUES

- Pond renovation needed – new liner, drainage system to divert water to sewer instead of storm drain, service road below the water line to allow maintenance equipment access to island
- New Pump system and pump house needed for the lake
- Landscape Improvements – Additional trees and landscaping, turf remediation
- Concrete sidewalks cracking
- Improved access to and around pond
- Tot lot improvements – themed playground

Carr Park Site Photos



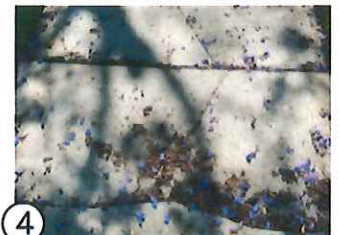
1
TURF CONDITION



2
ISLAND VEGETATION/WATER QUALITY



3
WALKS AND TREE VEGETATION



4
HARDSCAPE/WALKWAY CONDITION



5
PLAYGROUND CONDITION

Drew Park - Site Characteristics and Needs

DREW PARK – 2.28 acres, West of Newland St, South of Adams Ave

- Constructed in 1981
- Amenities include open turf area, walking path, tot lot, half-court basketball
- Picnic tables and benches

NEEDS/ISSUES

- Turf and soil in need of significant remediation due to high alkalinity content.
(Turf historically subject to bare spots, especially during dry periods)
- Landscape Improvements – Additional trees and landscaping, turf remediation
- Existing pathways in need of repair
- Tot lot improvements needed – Lacks ADA access
- Basketball court needs renovation

Drew Park Site Photos



1
TURF CONDITION



2
HARDSCAPE CONDITION



3
SWING STRUCTURE CONDITION



4
TREE CONDITION



5
PLAYGROUND CONDITION

Schroeder - Site Characteristics and Needs

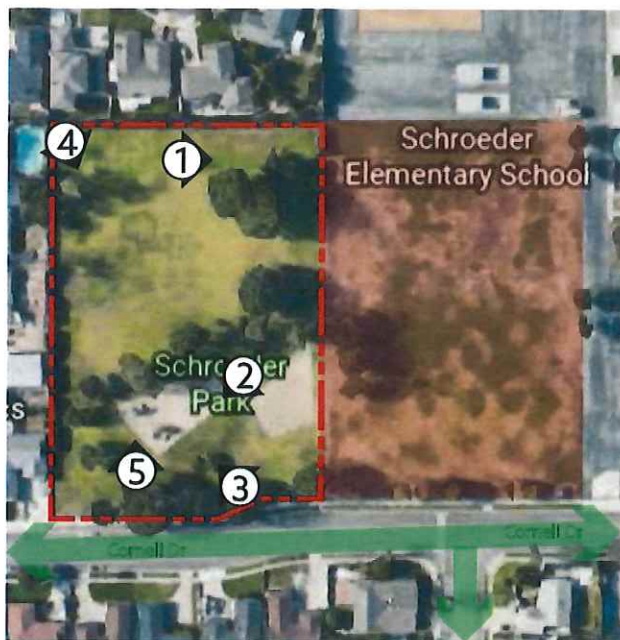
SCHROEDER PARK – 2.37 acres, West of Edwards St, North of McFadden Ave

- Constructed in 1966
- Features include open turf area, mature trees, tot lot and two vacant sand areas

NEEDS/ISSUES

- Tot lot lacking accessibility. No pathway system within the park
- Landscape Improvements – Additional trees and landscaping, turf remediation
- Existing pathways in need of repair
- Tot lot improvements needed
- Lack of ADA access
- Re-purposing of vacant sand lots
- Lack of benches and seating

Schroeder Park Site Photos



TURF CONDITION



HARDSCAPE CONDITION



SEATING CONDITION



TREE CONDITION



PLAYGROUND CONDITION

Themed Playground Examples



Themed Playground Examples



Themed Playground Examples



Public Process

- **Announcement on City's Webpage** – link provides information on Prop 68, park enhancement and public meeting notification
- **On-line survey**
- **Direct Mailer** - to residents within a 1,000 foot radius of each park site announcing public input opportunities
- **Newspaper Announcement** - posted in the HB Wave

Community Engagement

Community Workshops

- 7/9-** Workshop 1: PCH/Main St. @5PM
Surf City Nights
- 7/10-** Workshop 2: City Hall @6PM
Community Service Commission
- 7/15-** Workshop 3: City Hall @4PM
City Council Study Session
- 7/20-** Workshop 4: Drew Park @10AM
20252 Cape Cottage Ln.
On Site Meeting
- 7/20-** Workshop 5: Carr Park @1PM
16532 Springdale St.
On Site Meeting



Interactive Input

Tonight we have our interactive boards with us

Residents and the Council can utilize the boards that have magnets for park amenities and “create your park” then staff will take photos of it and include that with our other public input.

We also have the survey on I Pads, and hard copies for your convenience

Prop 68 - Green Infrastructure Grant

The proposed project will plant over 400 California native trees, shrubs, and ground covers that are pest resistant and drought tolerant along the half mile-long urban trail path that connects the Shipley Nature Center to the beach.

This project is an enhancement of the City's current Central Park Master Plan, which seeks to rehabilitate an existing nature trail in Central Park.

The end of the trail at the sound side of the Park will join Orange County's Bolsa Chica Ecological Reserve Trail that leads to the beach and allow people to access the OC Loop, a 66-mile biking and walking path that connects the public to California beaches.

Questions?