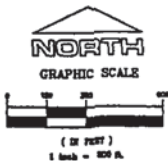


PROPOSED BOUNDARIES OF IMPROVEMENT AREAS A AND B OF THE CITY OF HUNTINGTON BEACH COMMUNITY FACILITIES DISTRICT NO. 2002-1 (McDONNELL CENTRE BUSINESS PARK), COUNTY OF ORANGE, STATE OF CALIFORNIA.

SHEET 1 OF 4



LEGEND:

- CFD NO. 2002-1 BOUNDARY
- EXEMPT LAND
- IMPROVEMENT AREA A
- IMPROVEMENT AREA B

NOTE:

SEE SHEET 4 FOR "N.A.P." DETAILS AND DIMENSIONS.

BASIS OF BEARINGS:

THE BEARINGS SHOWN HEREON ARE BASED UPON THE CENTERLINE OF BOLSA AVENUE, BEARING N89°25'20"W, PER PARCEL MAP NO. 97-190 FILED IN BOOK 299, PAGES 3 AND 4 OF PARCEL MAPS, RECORDS OF ORANGE COUNTY, CALIFORNIA.

FILED IN THE OFFICE OF THE CITY CLERK OF THE CITY OF HUNTINGTON BEACH, THIS 27TH DAY OF MARCH, 2002.

BY: Connie Brockway
CONNIE BROCKWAY, THE CITY CLERK OF THE CITY OF HUNTINGTON BEACH

I HEREBY CERTIFY THAT THE WITHIN MAP SHOWING PROPOSED BOUNDARIES OF IMPROVEMENT AREAS A AND B OF THE CITY OF HUNTINGTON BEACH COMMUNITY FACILITIES DISTRICT NO. 2002-1 (McDONNELL CENTRE BUSINESS PARK), COUNTY OF ORANGE, STATE OF CALIFORNIA, WAS APPROVED BY THE CITY COUNCIL OF THE CITY OF HUNTINGTON BEACH AT A REGULAR MEETING THEREOF HELD ON THE 1ST DAY OF APRIL, 2002, BY ITS RESOLUTION NO. 2002-26.

BY: Connie Brockway
CONNIE BROCKWAY, THE CITY CLERK OF THE CITY OF HUNTINGTON BEACH

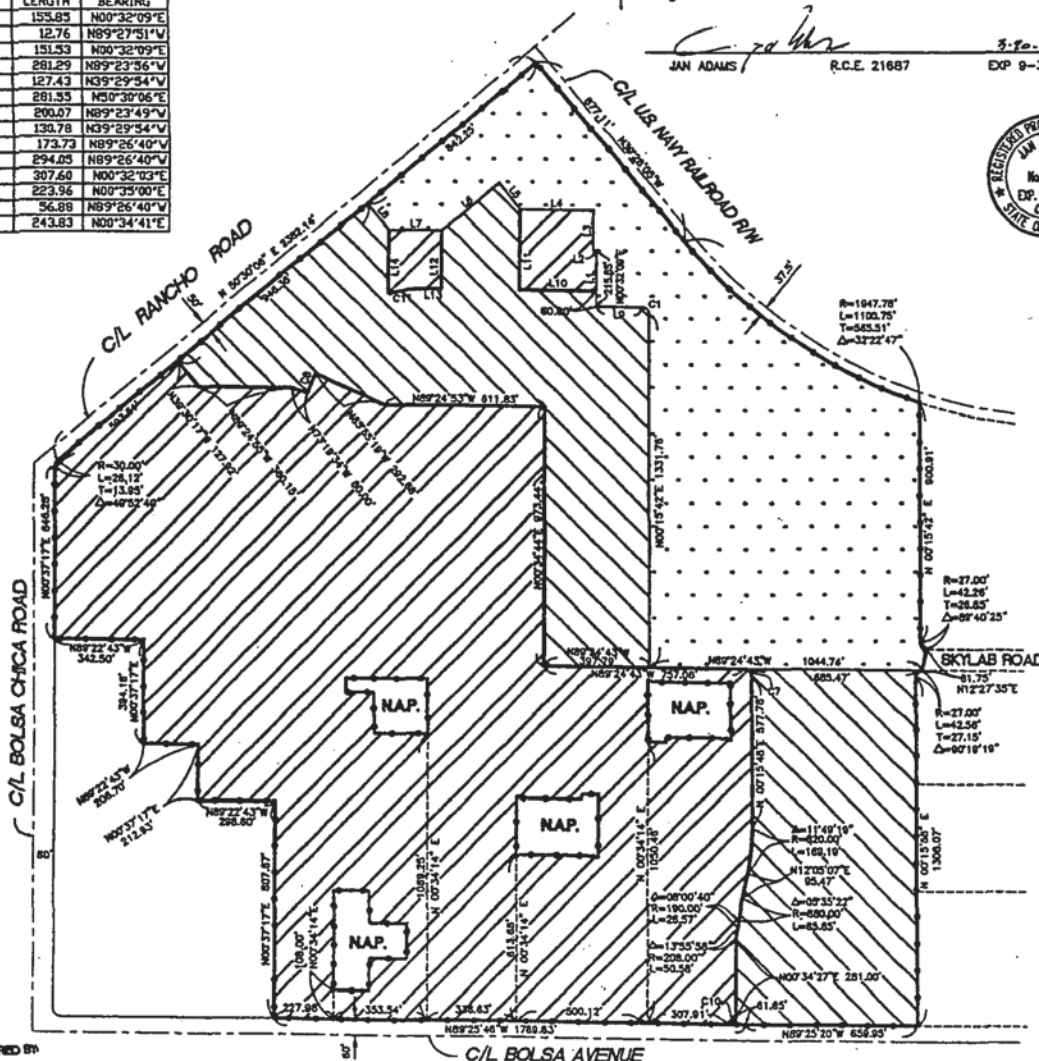
RECORDING REQUESTED BY: CITY OF HUNTINGTON BEACH
FILED THIS 3RD DAY OF APRIL, 2002, AT THE HOUR OF 1:41 O'CLOCK P.M., IN BOOK 85 OF MAPS OF ASSESSMENT AND COMMUNITY FACILITIES DISTRICTS AT PAGE 2-6 MAP IN THE OFFICE OF THE COUNTY RECORDER IN THE COUNTY OF ORANGE, STATE OF CALIFORNIA.

FEE: EXPEDIT
INSTRUMENT NO. 2002073386

BY: Darlene J. Beaton
DARLENE J. BEATON, INTERIM COUNTY RECORDER OF COUNTY OF ORANGE

| CURVE TABLE | | | |
|-------------|-----------|--------|--------|
| CURVE | DELTA | RADIUS | LENGTH |
| C1 | 89°42'22" | 25.00 | 39.14 |
| C6 | 09°37'52" | 470.00 | 79.00 |
| C7 | 89°49'31" | 27.00 | 42.26 |
| C10 | 89°59'47" | 27.00 | 42.41 |
| C11 | 15°49'24" | 530.00 | 144.99 |

| LINE TABLE | | |
|------------|--------|-------------|
| LINE | LENGTH | BEARING |
| L1 | 153.85 | N00°32'09"E |
| L2 | 12.76 | N89°27'51"W |
| L3 | 151.53 | N00°32'09"E |
| L4 | 281.29 | N89°23'36"W |
| L5 | 127.43 | N89°29'34"W |
| L6 | 281.55 | N50°39'06"E |
| L7 | 200.07 | N89°23'49"W |
| L8 | 139.78 | N89°29'34"W |
| L9 | 173.73 | N89°26'40"W |
| L10 | 294.85 | N89°26'40"W |
| L11 | 307.60 | N00°32'03"E |
| L12 | 223.56 | N00°35'00"E |
| L13 | 56.89 | N89°26'40"W |
| L14 | 243.83 | N00°34'41"E |



JAN ADAMS
R.C.E. 21687
EXP 9-30-2005



PLANS PREPARED BY



ADAMS & STREETER
CIVIL ENGINEERS, INC.
18 Corporate Park, Irvine, CA 92618
Tel 949 451-8330 Fax 949 451-0255

JH 000340