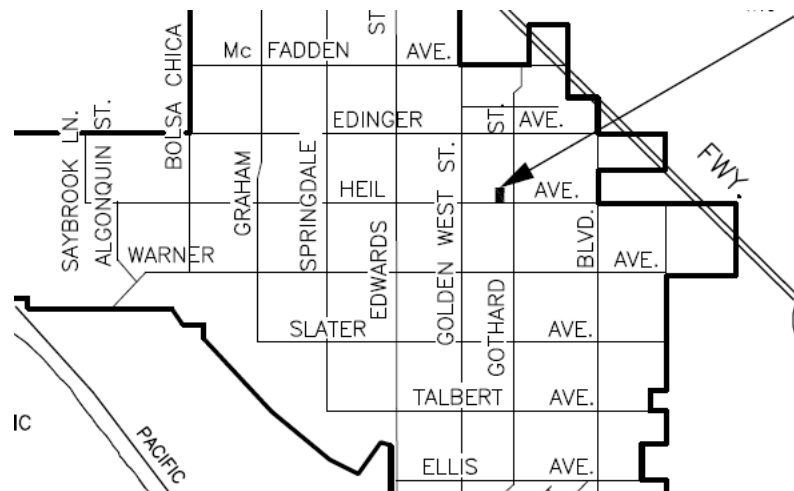




# Heil Storm Water Pump Station Replacement Project, CC1290



CC 1290

# PROJECT NEED

The existing pump station and culvert are under capacity.

- These photos are from February 21, 2005, from a 10-year storm event.
- The box culvert under Heil Ave. is under capacity and causes a backwater condition up-stream of Heil Ave.



# PROJECT PURPOSE

Increase the capacity of the Heil Pump Station to convey the 100-year storm

The project will:

- Increase the Heil box culvert capacity by installing a parallel culvert under Heil Ave.
- Increase the pump station capacity by increasing the number of pumps from two to four. The station will operate with three pumps in service with a fourth pump reserved for operational redundancy.
- Remove approximately 87 acres from the FEMA 100-year flood zone.

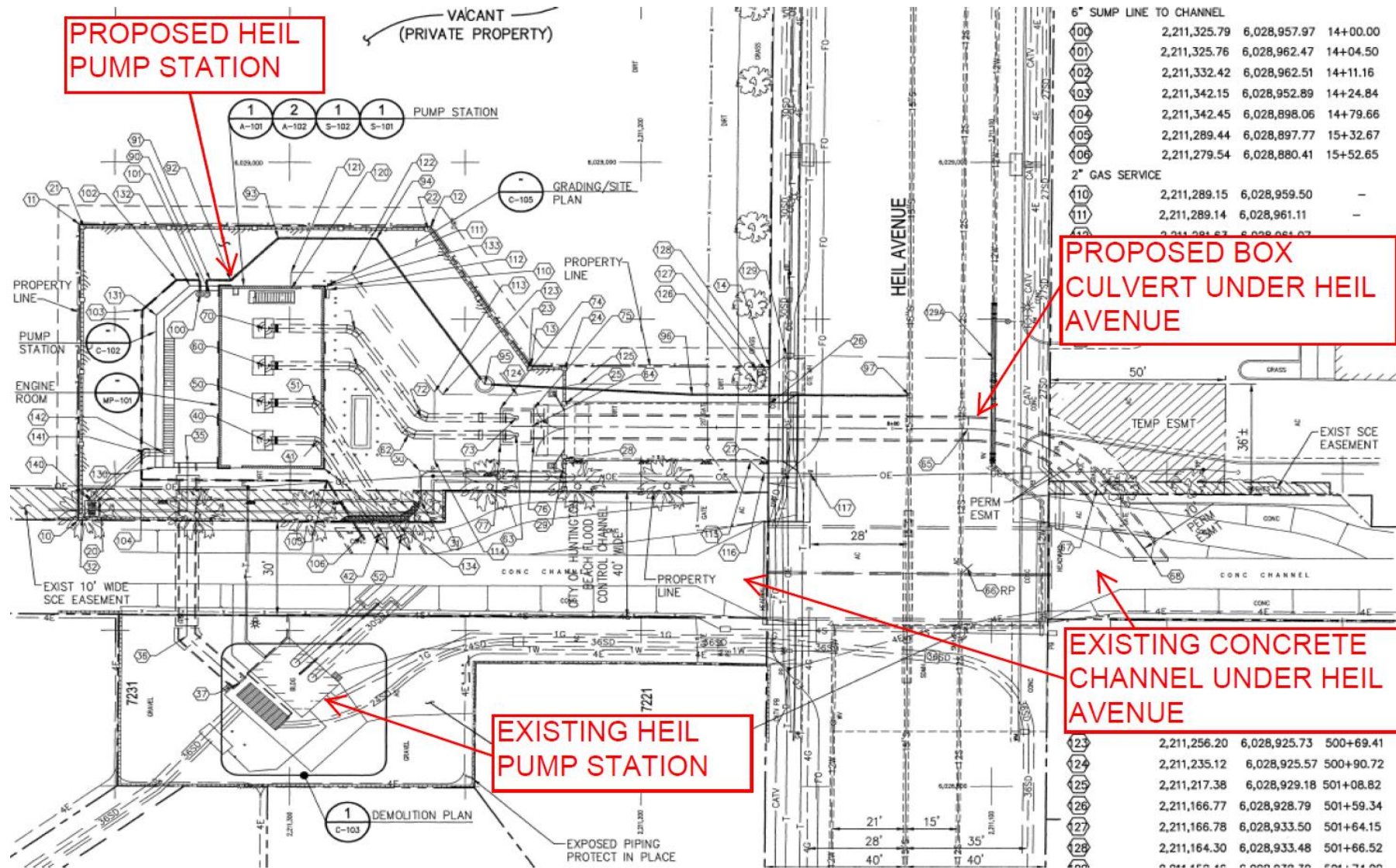
## Funding

- |                       |             |
|-----------------------|-------------|
| • FEMA Grant          | \$6,598,950 |
| • Drainage Fund       | \$2,000,000 |
| • Infrastructure Fund | \$4,200,050 |





# Heil Storm Water Pump Station Project, Project Overview:



# Questions?

