

## **Appendix C: Project Drawings**

---



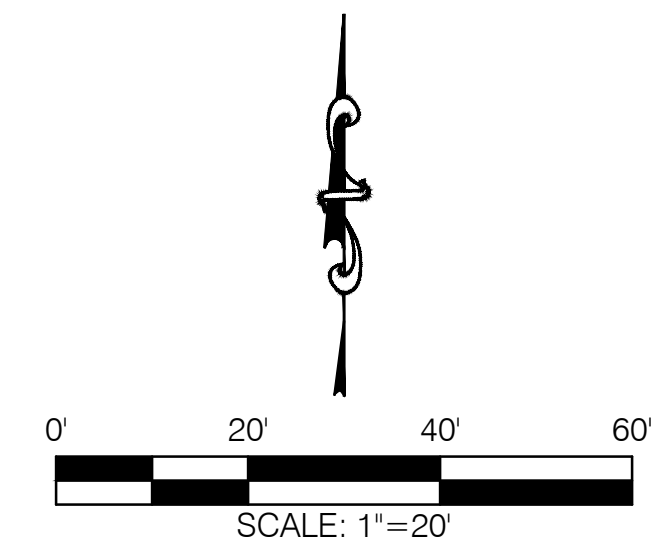
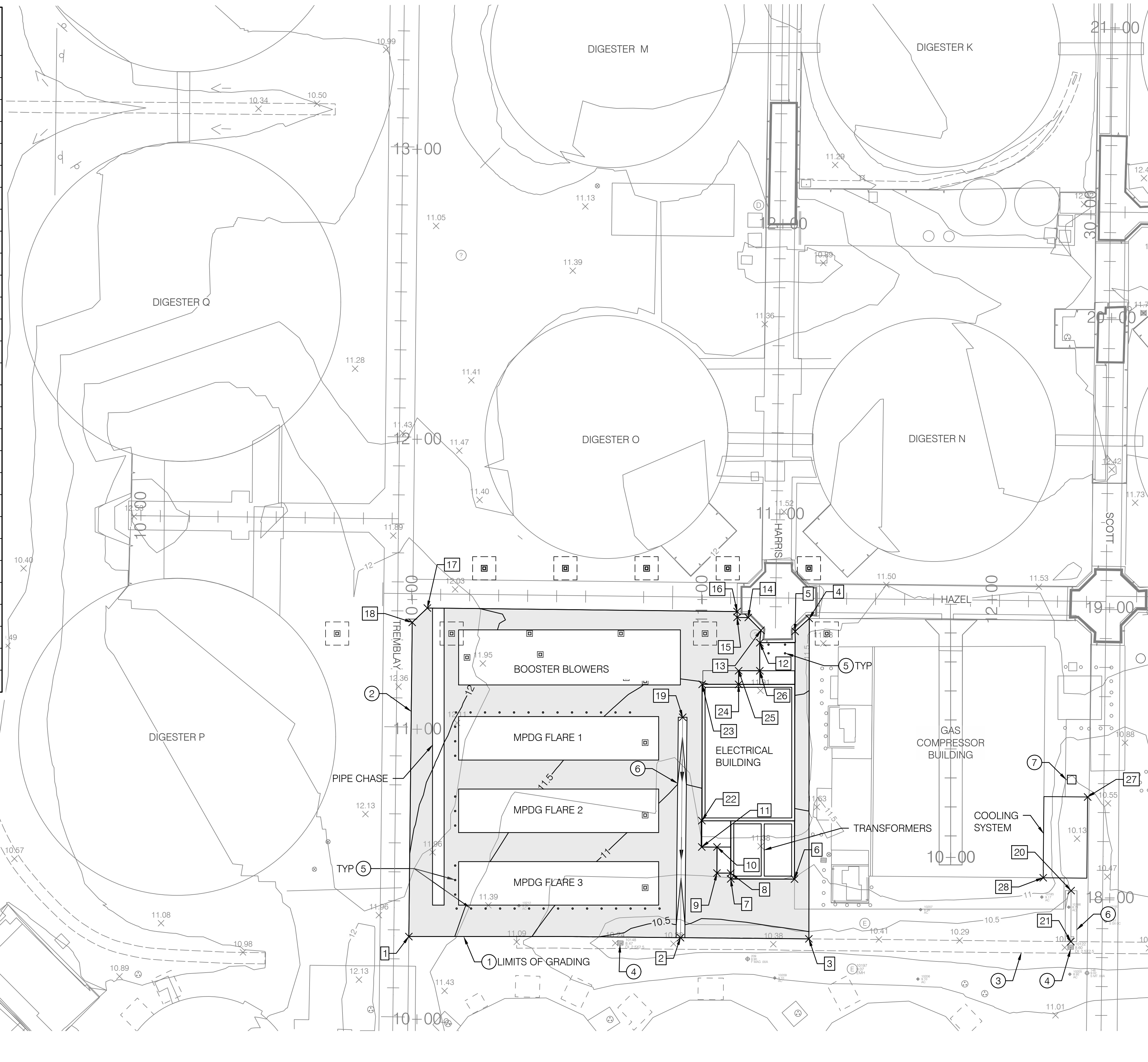
03/11/2026



03/11/2026

PAVING TABLE

POINT #	TOP OF SURFACE EL	NORTHING	EASTING
1	11.80	2179121.50	6041127.43
2	10.29	2179121.13	6041221.10
3	10.47	2179120.70	6041265.38
4	11.80	2179231.20	6041265.50
5	11.82	2179226.74	6041260.62
6	10.71	2179141.33	6041260.43
7	10.68	2179141.37	6041238.43
8	10.70	2179143.37	6041238.43
9	10.69	2179143.39	6041233.68
10	10.79	2179152.39	6041233.70
11	10.79	2179152.40	6041228.45
12	11.92	2179222.82	6041248.46
13	11.81	2179227.11	6041248.87
14	11.84	2179231.53	6041244.48
15	11.90	2179231.56	6041240.63
16	11.91	2179233.57	6041240.64
17	12.25	2179234.79	6041133.81
18	12.25	2179229.84	6041128.59
19	11.07	2179197.12	6041221.86
20	10.42	2179137.34	6041355.82
21	10.18	2179119.77	6041355.73
22	10.88	2179161.48	6041228.47
23	11.49	2179208.48	6041228.58
24	11.55	2179208.45	6041241.16
25	11.64	2179213.16	6041241.17
26	11.67	2179213.14	6041248.46
27	11.37	2179169.63	6041361.51
28	11.50	2179141.77	6041346.21



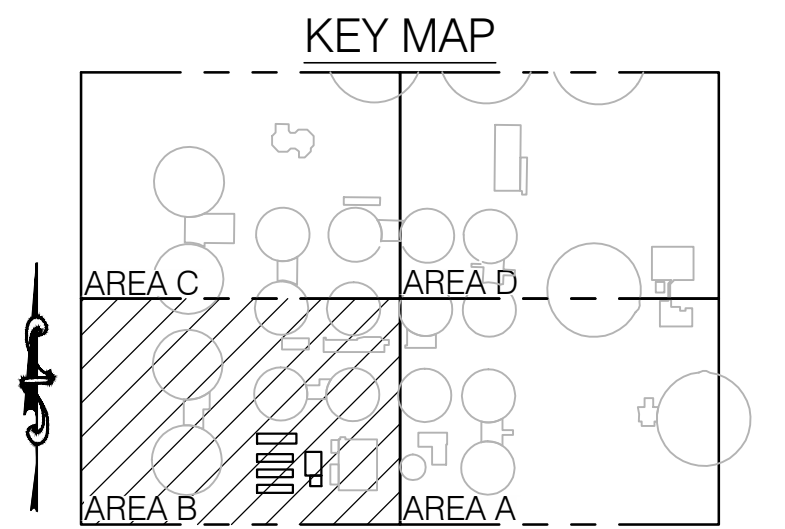
- GENERAL NOTES:**
- SEE DWG 20C1001 FOR BENCHMARK AND BASIS OF BEARING AND COORDINATES.
  - SEE STRUCTURAL DRAWINGS FOR PAD ELEVATIONS.
  - SEE DEMOLITION DRAWINGS FOR DEMOLITION OF EXISTING FACILITIES.
  - CONTRACTOR SHALL PERFORM LOCALIZED PAVEMENT DEMOLITION FOR PIPE BRIDGE, FOUNDATIONS, AND ALONG ALIGNMENT FOR SUBSURFACE UTILITY INSTALLATIONS FOR AREAS OUTSIDE OF GRADING LIMITS. CONTRACTOR TO RESTORE AND REPAIR PAVEMENT TO MATCH EXISTING CONDITIONS.

- KEY NOTES:**
- CONSTRUCT ASPHALT CONCRETE PER DETAIL 3/00C5002.
  - MATCH GRADE OF EXISTING ASPHALT CONCRETE. SLURRY SEAL SHALL EXTEND 4 FEET PAST TRANSITION.
  - PROTECT EXISTING CONCRETE SWALE IN PLACE.
  - PROTECT EXISTING CATCH BASIN INLET IN PLACE.
  - CONSTRUCT GUARD POST PER STD S-120/00C5001.
  - CONSTRUCT CONCRETE VALLEY GUTTER PER DETAIL 2/00C5002.
  - CONSTRUCT CATCH BASIN PER DETAIL 1/00C5003.

- LEGEND**
- NEW J-124 PAVEMENT
  - 7.0- NEW CONTOURS (J-124)
  - 7.0- EXISTING CONTOURS
  - VALLEY GUTTER

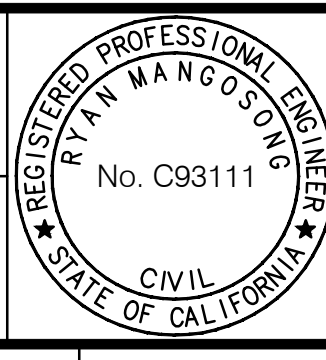
**PROPERTY LEGAL DESCRIPTION:**  
SEE APPENDIX A

**OWNER NAME AND ADDRESS:**  
ORANGE COUNTY SANITATION DISTRICT  
10844 ELLIS AVENUE  
FOUNTAIN VALLEY, CA 92708  
(714) 962-2411



DWG: C:\Users\jryden\Documents\Projects\Phase Construction\Sheets\Civil\J-124-21C1002.dwg  
 DATE: Dec 31, 2025 10:17am XREFS: J-124-GDBDR J-124-VSURV02 J-117B-C-UTL01 J-124-P2-G-KEYP J-124-C-GRD02 J-124-C-23SITE02 J-124-G-REFP02  
 USER: jryden  
 PLT02-C-SITE01-P299A-DEMO J-124-S-23SITE01

DESIGNED BY: RYAN MANGOSONG - 01/26  
 DRAWN BY: SARAH RAMIREZ - 01/26  
 CHECKED BY: NEIL WATERMAN - 01/26  
 LINE IS 2 INCHES AT FULL SIZE (IF NOT 2"-SCALE ACCORDINGLY)



DS3  
 JANUARY 2026  
 NOT FOR CONSTRUCTION

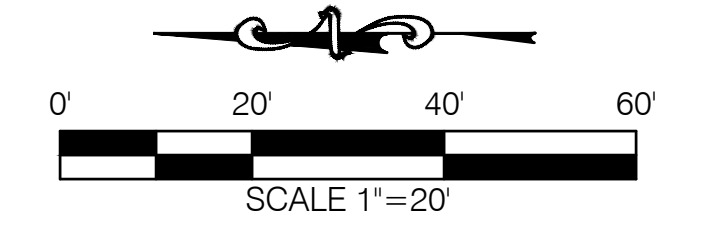


DIGESTER GAS FACILITIES REHABILITATION  
 PLANT 2  
 PAVING AND GRADING PLAN - AREA B  
 PROJECT NO. J-124  
 DRAWING NO. 21C1002  
 X OF

MARK	DESCRIPTION	DATE	APPR.



03/11/2026

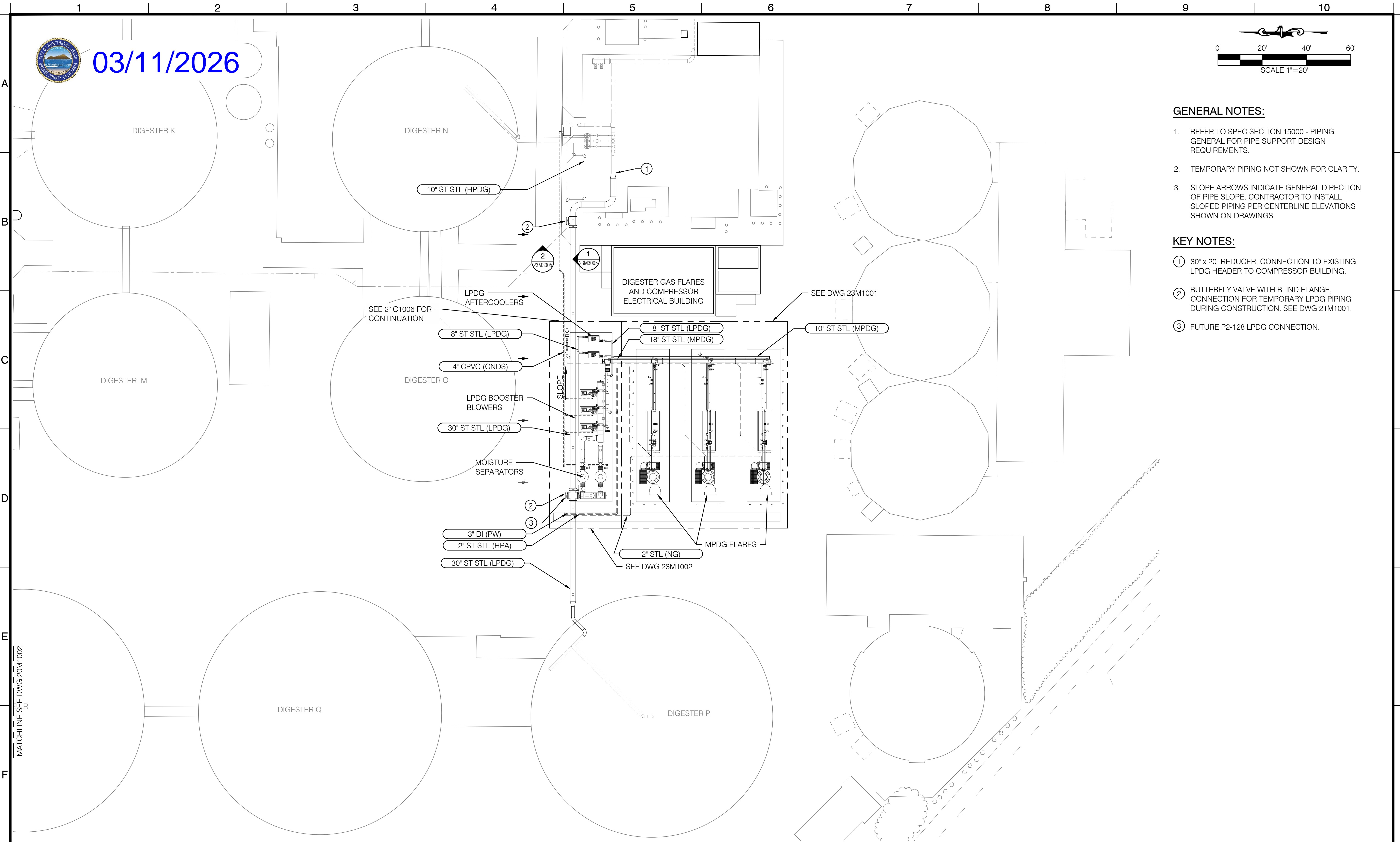


**GENERAL NOTES:**

1. REFER TO SPEC SECTION 15000 - PIPING GENERAL FOR PIPE SUPPORT DESIGN REQUIREMENTS.
2. TEMPORARY PIPING NOT SHOWN FOR CLARITY.
3. SLOPE ARROWS INDICATE GENERAL DIRECTION OF PIPE SLOPE. CONTRACTOR TO INSTALL SLOPED PIPING PER CENTERLINE ELEVATIONS SHOWN ON DRAWINGS.

**KEY NOTES:**

- ① 30" x 20" REDUCER, CONNECTION TO EXISTING LPDG HEADER TO COMPRESSOR BUILDING.
- ② BUTTERFLY VALVE WITH BLIND FLANGE, CONNECTION FOR TEMPORARY LPDG PIPING DURING CONSTRUCTION. SEE DWG 21M1001.
- ③ FUTURE P2-128 LPDG CONNECTION.



DWG: C:\Users\arivas\Documents\ACC\Project Hub\68521 - J-124\Digester Gas Facilities Rehab\Phase Construction\Sheet\MECHANICAL\124-20M1002.dwg USER: ARivas  
 DATE: Jan 06, 2026 2:16pm XREFS: J-124-GDBDR J-178-SURV02 J-124-V-SURV02 J-124-C-UTIL01 J-124-M-GAS02B J-124-M-25EXP-06 J-124-M-25EXP-05 J-124-M-25EXP-04 J-124-S-23SITE02  
 MATCHLINE SEE DWG 20M1002

MARK	DESCRIPTION	DATE	APPR.

DESIGNED BY: BENITO GUTIERREZ - 01/26  
 DRAWN BY: ALEX RIVAS - 01/26  
 CHECKED BY: TOM CHAPMAN - 01/26  
 LINE IS 2 INCHES AT FULL SIZE (IF NOT 2"-SCALE ACCORDINGLY)



DS3  
 JANUARY 2026  
 NOT FOR CONSTRUCTION



DIGESTER GAS FACILITIES REHABILITATION		PROJECT NO. J-124
PLANT 2 MECHANICAL OVERALL PLAN - 1		DRAWING NO. 20M1002 OF



03/11/2026

INSTRUMENT/EQUIPMENT	TAG NOS.		
	MPDG FLARE 1	MPDG FLARE 2	MPDG FLARE 3
1 COMBUSTION AIR INLET DAMPER	DMPR 104	DMPR 134	DMPR 164
2 DIFFERENTIAL PRESSURE TRANSMITTER	PDIT 310	PDIT 311	PDIT 312
3 PRESSURE SWITCH	PSL 111	PSL 141	PSL 171
4 COMBUSTION AIR BLOWER	25NBWR105	25NBWR135	25NBWR165

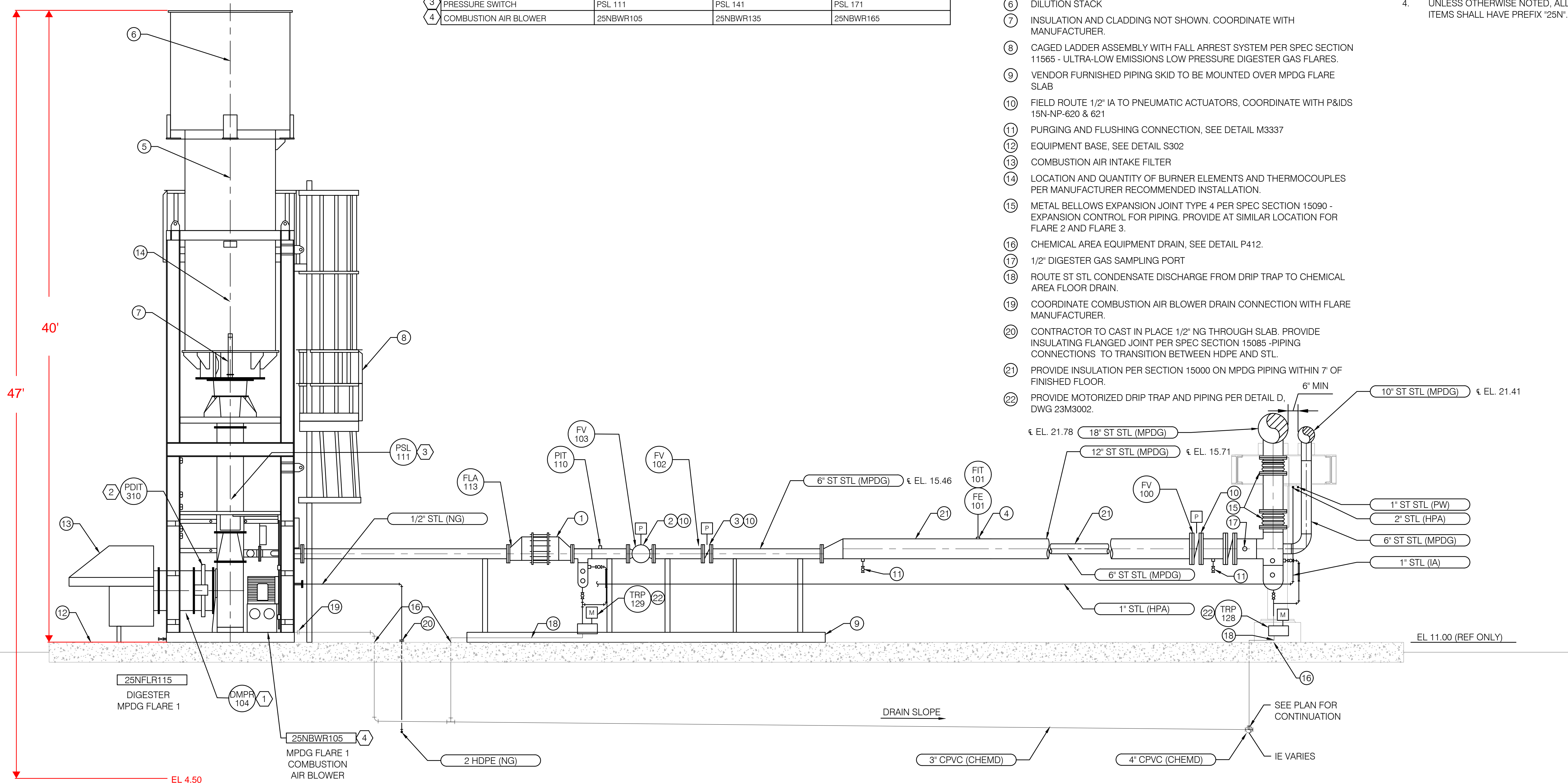
KEY NOTES:

- FLAME ARRESTOR
- FLARE FLOW CONTROL VALVE
- FLARE SAFETY SHUT-OFF VALVE
- FLOW METER
- MAIN STACK. STACK HEIGHT TO VARY BASED ON MANUFACTURER. PROVIDE SAMPLE PORTS FOR SCAQMD TESTING PER SPEC SECTION 11565 - ULTRA LOW EMISSION LOW PRESSURE DIGESTER GAS FLARES.
- DILUTION STACK
- INSULATION AND CLADDING NOT SHOWN. COORDINATE WITH MANUFACTURER.
- CAGED LADDER ASSEMBLY WITH FALL ARREST SYSTEM PER SPEC SECTION 11565 - ULTRA-LOW EMISSIONS LOW PRESSURE DIGESTER GAS FLARES.
- VENDOR FURNISHED PIPING SKID TO BE MOUNTED OVER MPDG FLARE SLAB
- FIELD ROUTE 1/2" IA TO PNEUMATIC ACTUATORS. COORDINATE WITH P&IDS 15N-NP-620 & 621
- PURGING AND FLUSHING CONNECTION. SEE DETAIL M3337
- EQUIPMENT BASE, SEE DETAIL S302
- COMBUSTION AIR INTAKE FILTER
- LOCATION AND QUANTITY OF BURNER ELEMENTS AND THERMOCOUPLES PER MANUFACTURER RECOMMENDED INSTALLATION.
- METAL BELLOWS EXPANSION JOINT TYPE 4 PER SPEC SECTION 15090 - EXPANSION CONTROL FOR PIPING. PROVIDE AT SIMILAR LOCATION FOR FLARE 2 AND FLARE 3.
- CHEMICAL AREA EQUIPMENT DRAIN, SEE DETAIL P412.
- 1/2" DIGESTER GAS SAMPLING PORT
- ROUTE ST STL CONDENSATE DISCHARGE FROM DRIP TRAP TO CHEMICAL AREA FLOOR DRAIN.
- COORDINATE COMBUSTION AIR BLOWER DRAIN CONNECTION WITH FLARE MANUFACTURER.
- CONTRACTOR TO CAST IN PLACE 1/2" NG THROUGH SLAB. PROVIDE INSULATING FLANGED JOINT PER SPEC SECTION 15085 - PIPING CONNECTIONS TO TRANSITION BETWEEN HDPE AND STL.
- PROVIDE INSULATION PER SECTION 15000 ON MPDG PIPING WITHIN 7' OF FINISHED FLOOR.
- PROVIDE MOTORIZED DRIP TRAP AND PIPING PER DETAIL D, DWG 23M3002.



GENERAL NOTES:

- TOC ELEVATIONS SHOWN ARE FOR REFERENCE ONLY.
- REFER TO STRUCTURAL DRAWINGS FOR PIPE RACK INFORMATION.
- DRAIN PIPING TO BE ROUTED TO LPDG BOOSTER BLOWER CORROSIVE SUMP WITH A MINIMUM OF 1% SLOPE. ENCASE ALL DRAIN PIPING UNDER SLAB PER DETAIL CP119.
- UNLESS OTHERWISE NOTED, ALL TAGGED ITEMS SHALL HAVE PREFIX '25N'.

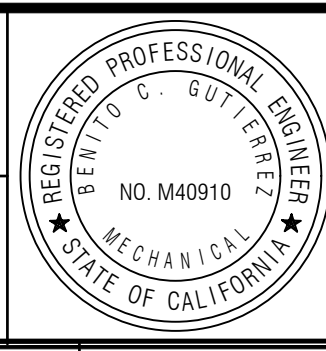


SECTION A SCALE: 3/8" = 1'-0' 23M1001

DWG: C:\Users\arivas\Documents\ACC Project Hub\68521 - J-124 Digester Gas Facilities Rehab\Project Files\PHASE CONSTRUCTION\MECHANICAL\124-23M3001.dwg USER: ARivas DATE: Jan 06, 2026 2:17pm XREFS: J-124-GDBDR J-124-M-SECT02

MARK	DESCRIPTION	DATE	APPR.

DESIGNED BY: BENITO GUTIERREZ - 01/26  
 DRAWN BY: ALEX RIVAS - 01/26  
 CHECKED BY: TOM CHAPMAN - 01/26



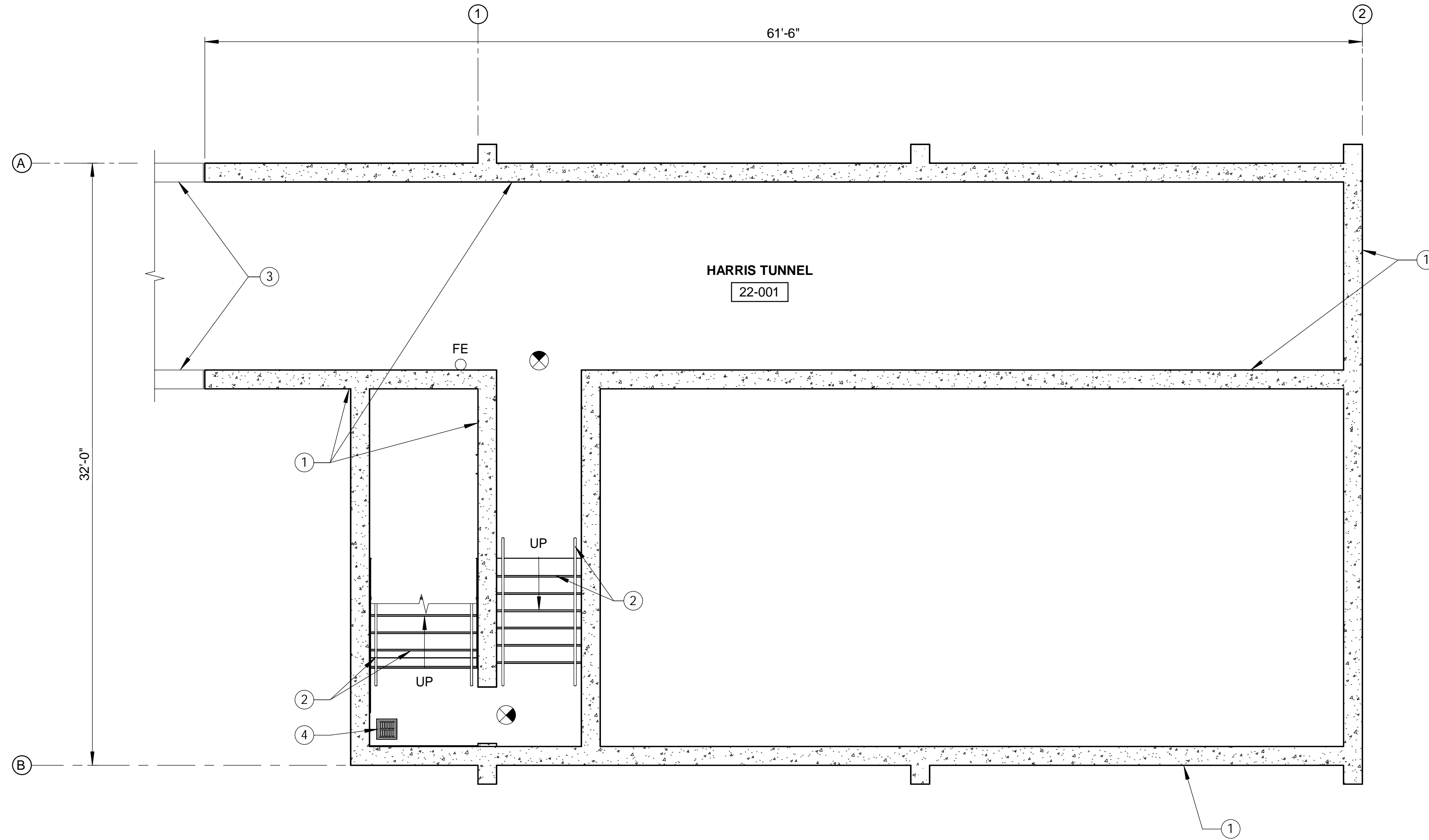
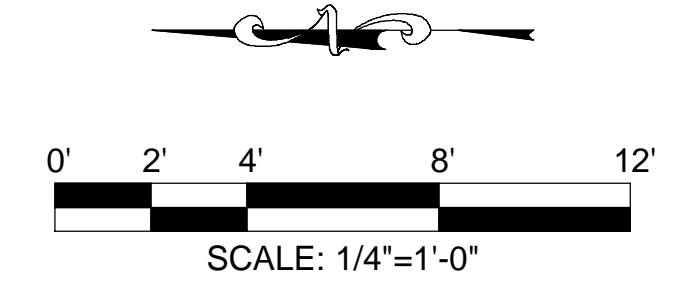
DS3  
 JANUARY 2026  
 NOT FOR CONSTRUCTION



DIGESTER GAS FACILITIES REHABILITATION		PROJECT NO. J-124
PLANT 2 FLARES SECTION - 1		DRAWING NO. 23M3001
		OF



03/11/2026



**GENERAL NOTES:**

1. FOR FRP DOOR, FRAME, OVERHEAD COILING DOOR, AND HARDWARE INFORMATION, REFERENCE ARCHITECTURAL DOOR SCHEDULE ON DRAWING 00A6002
2. FOR STRUCTURAL DETAILS, REFERENCE "S" DRAWINGS
3. FOR MECHANICAL DETAILS, REFERENCE "M" DRAWINGS
4. FOR HVAC DETAILS, REFERENCE "H" DRAWINGS
5. FOR ELECTRICAL DETAILS, REFERENCE "E" DRAWINGS

**KEY NOTES:**

- ① CAST-IN-PLACE CONCRETE WALL REFERENCE STRUCTURAL DRAWINGS
- ② REFERENCE STRUCTURAL DRAWINGS FOR GUARDRAIL, HANDRAIL AND STAIR REQUIREMENTS
- ③ EXISTING CONCRETE WALL TO REMAIN
- ④ FLOOR DRAIN, REFERENCE MECHANICAL FOR DETAILS

**HARRIS TUNNEL PLAN**

SCALE: 1/4" = 1'-0"

FILE: Autodesk Docs://68521 - J-124 Digester Gas Facilities Rehab/J-124 - New Plant 2 Flare Control Building - Architectural.rvt

MARK	DESCRIPTION	DATE	APPR.

DESIGNED BY: HOLLENBAUGH, MICHELE - 01/26  
 DRAWN BY: VALDEZ, FERNANDO - 01/26  
 CHECKED BY: ANTUNOVICH, JANESSA - 01/26

LINE IS 2 INCHES  
 AT FULL SIZE  
 (IF NOT 2'-SCALE ACCORDINGLY)

07/31/2024

DS3  
 JANUARY 2026  
 NOT FOR  
 CONSTRUCTION



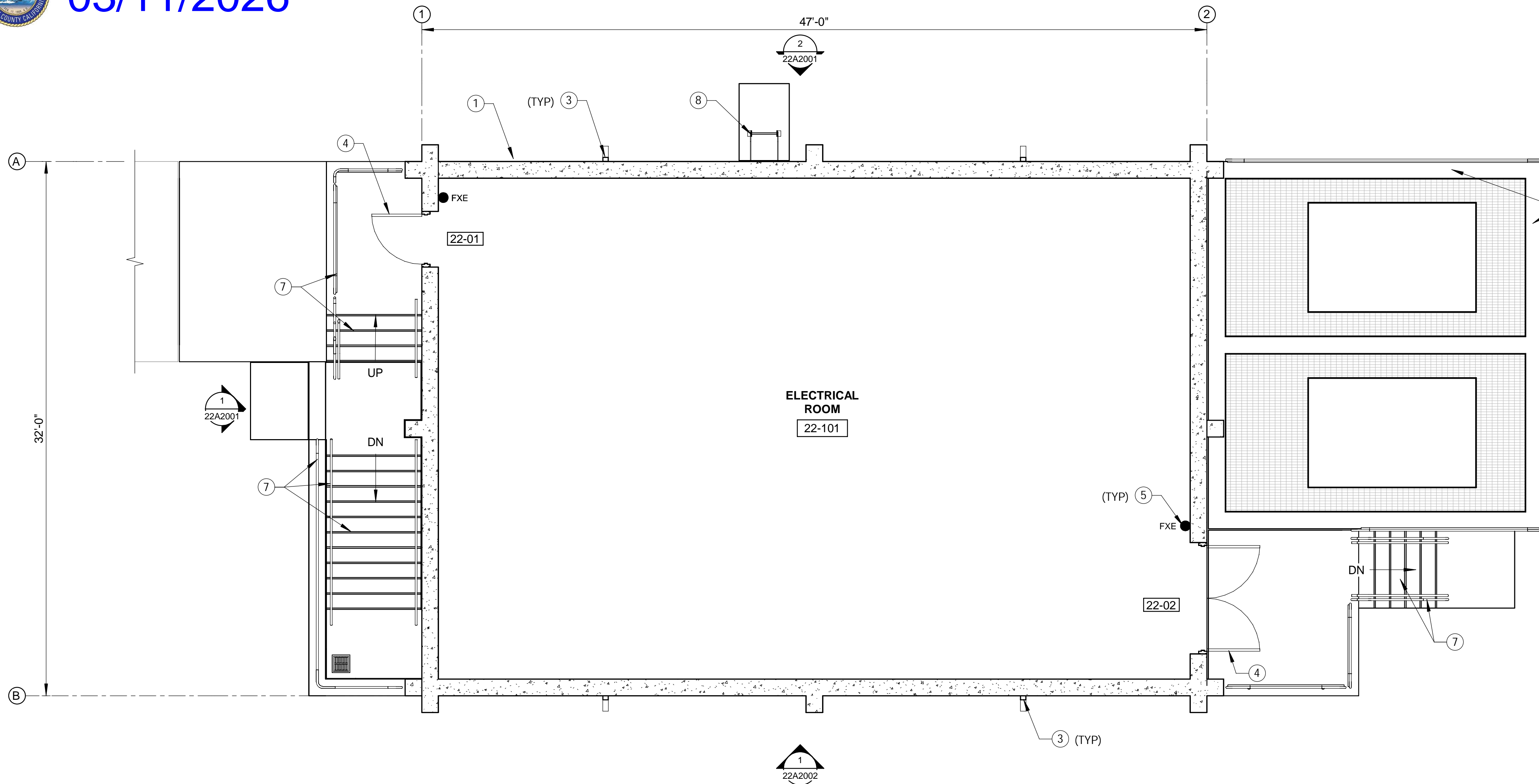
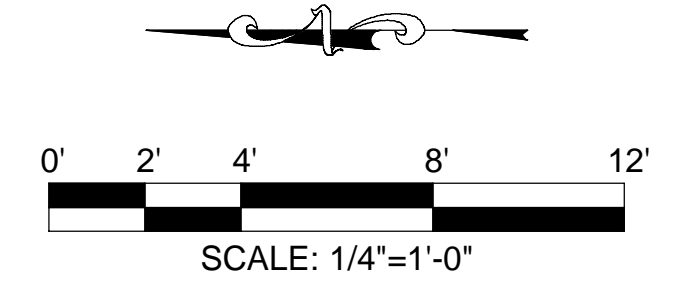
DIGESTER GAS FACILITIES REHABILITATION  
 PLANT 2 DIGESTER GAS  
 COMPRESSORS AND FLARES  
 ELECTRICAL BUILDING - HARRIS

PROJECT NO. J-124  
 DRAWING NO. 22A1001  
 OF 967

TUNNEL PLAN



03/11/2026



GENERAL NOTES:

- 1. FOR FRP DOOR, FRAME, OVERHEAD COILING DOOR, AND HARDWARE INFORMATION, REFERENCE ARCHITECTURAL DOOR SCHEDULE ON DRAWING 00A6002
- 2. FOR STRUCTURAL DETAILS, REFERENCE "S" DRAWINGS
- 3. FOR MECHANICAL DETAILS, REFERENCE "M" DRAWINGS
- 4. FOR HVAC DETAILS, REFERENCE "H" DRAWINGS
- 5. FOR ELECTRICAL DETAILS, REFERENCE "E" DRAWINGS

KEY NOTES:

- ① CAST-IN-PLACE CONCRETE WALL PER STRUCTURAL, REFERENCE ARCHITECTURAL ELEVATIONS FOR PATTERN.
- ② CAST-IN-PLACE CONCRETE PILASTER, REFERENCE STRUCTURAL DRAWINGS
- ③ DOWNSPOUT, REFERENCE TYPICAL DETAIL AG227/TYP
- ④ FIBERGLASS-REINFORCED DOOR AND FRAME SYSTEM, REFERENCE SPECIFICATION SECTION 08120
- ⑤ FIRE EXTINGUISHER, TYPE AS INDICATED. MOUNTING PER DETAIL AN400/TYP, REFERENCE SPECIFICATION SECTION 10520 - FIRE PROTECTION SPECIALTIES
- ⑥ NOT USED
- ⑦ REFERENCE STRUCTURAL DRAWINGS FOR GUARDRAIL, HANDRAIL, AND STAIR REQUIREMENTS
- ⑧ LADDER, REFERENCE STRUCTURAL DRAWINGS

FLOOR PLAN  
SCALE: 1/4" = 1'-0"

FILE: Autodesk Docs://68521 - J-124 Digester Gas Facilities Rehab/J-124 - New Plant 2 Flare Control Building - Architectural.rvt

MARK	DESCRIPTION	DATE	APPR

DESIGNED BY: HOLLENBAUGH, MICHELE - 01/26  
 DRAWN BY: VALDEZ, FERNANDO - 01/26  
 CHECKED BY: ANTUNOVICH, JANESSA - 01/26

LINE IS 2 INCHES  
 AT FULL SIZE  
 (IF NOT 2'-SCALE ACCORDINGLY)

07/31/2024

DS3  
 JANUARY 2026  
 NOT FOR  
 CONSTRUCTION

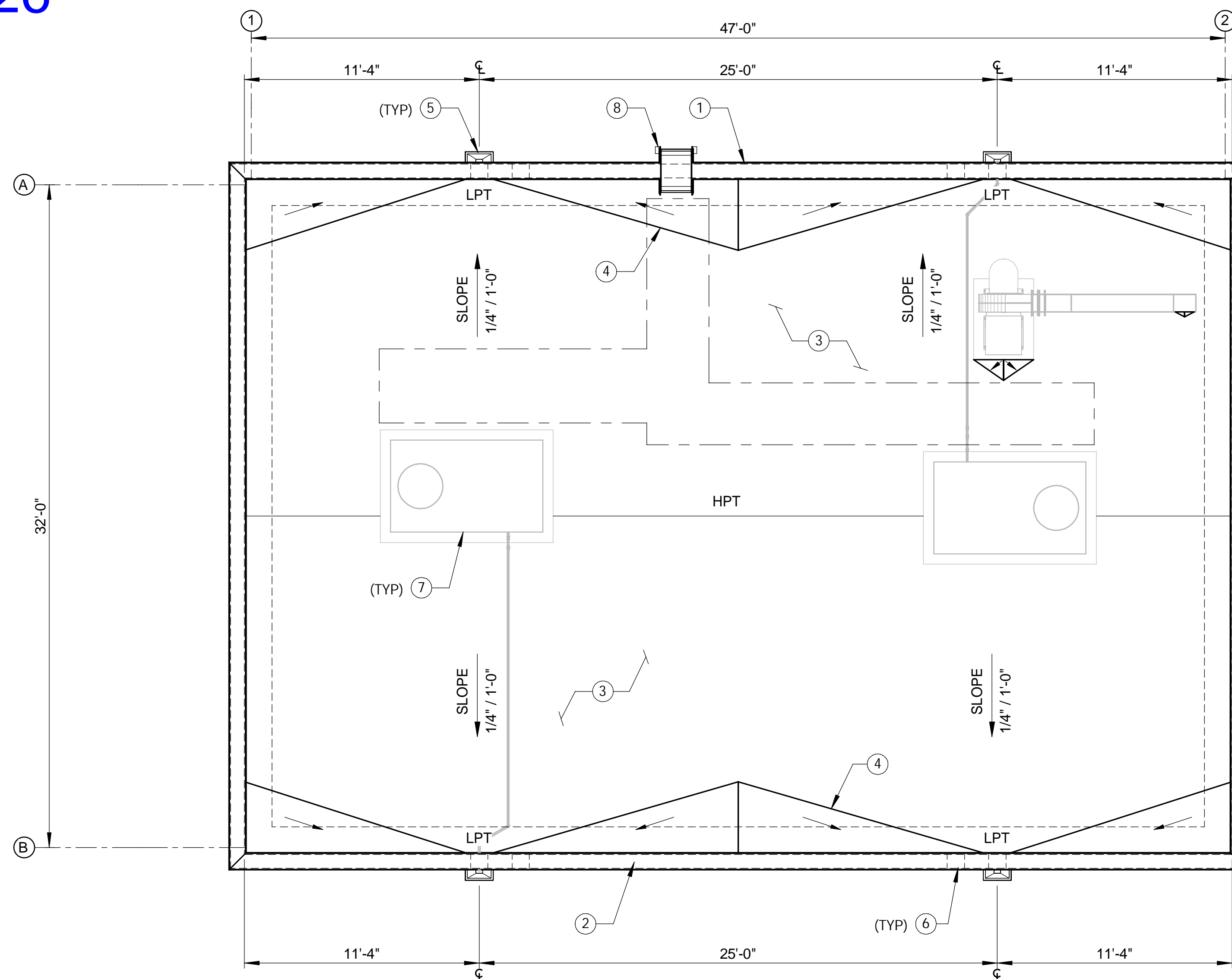
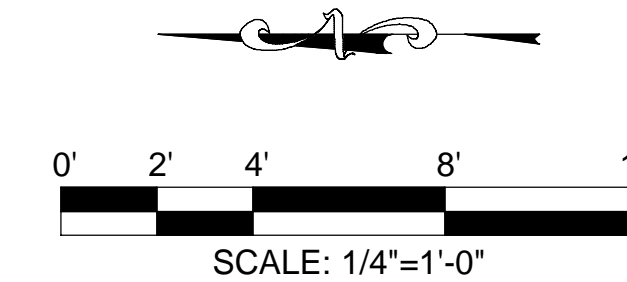


DIGESTER GAS FACILITIES REHABILITATION  
 PLANT 2 DIGESTER GAS  
 COMPRESSORS AND FLARES  
 ELECTRICAL BUILDING - FLOOR PLAN

PROJECT NO. J-124  
 DRAWING NO. 22A1002  
 OF 967



03/11/2026



ROOF PLAN

SCALE: 1/4" = 1'-0"

GENERAL NOTES:

- FOR FRP DOOR, FRAME, OVERHEAD COILING DOOR, AND HARDWARE INFORMATION, REFERENCE ARCHITECTURAL DOOR SCHEDULE ON DRAWING 00A6002
- FOR STRUCTURAL DETAILS, REFERENCE "S" DRAWINGS
- FOR MECHANICAL DETAILS, REFERENCE "M" DRAWINGS
- FOR HVAC DETAILS, REFERENCE "H" DRAWINGS
- FOR ELECTRICAL DETAILS, REFERENCE "E" DRAWINGS

KEY NOTES:

- CAST-IN-PLACE CONCRETE WALL BELOW PER STRUCTURAL, REFERENCE ARCHITECTURAL ELEVATIONS FOR PATTERN.
- PREFABRICATED ALUMINUM METAL COPING, COLOR SELECTION BY OWNER
- PVC ROOF MEMBRANE REFERENCE SPECIFICATION SECTION 07554 - FULLY ADHERED POLYVINYL CHLORIDE ROOFING, COVER BOARD, AND TAPERED RIGID INSULATION OVER METAL DECK. HIGH POINT (HPT) AND LOW POINT (LPT) AS INDICATED.
- ROOF CRICKETS, SLOPED PER MFR'S RECOMMENDATIONS.
- PRIMARY ROOF SCUPPER & CONDUCTOR HEAD THROUGH WALL, REFERENCE TYPICAL DETAIL AG223/TYP
- OVERFLOW ROOF SCUPPER THROUGH WALL, REFERENCE TYPICAL DETAIL AG222/TYP
- REFERENCE "H" DRAWINGS FOR UNIT REQUIREMENTS
- LADDER, REFERENCE STRUCTURAL DRAWINGS

FILE: Autodesk Docs://68521 - J-124 Digester Gas Facilities Rehab/J-124 - New Plant 2 Flare Control Building - Architectural.rvt

MARK	DESCRIPTION	DATE	APPR.

DESIGNED BY: HOLLENBAUGH, MICHELE - 01/26  
 DRAWN BY: VALDEZ, FERNANDO - 01/26  
 CHECKED BY: ANTUNOVICH, JANESSA - 01/26

LINE IS 2 INCHES  
 AT FULL SIZE  
 (IF NOT 2'-SCALE ACCORDINGLY)

DS3  
 JANUARY 2026

NOT FOR  
 CONSTRUCTION

01/31/2024



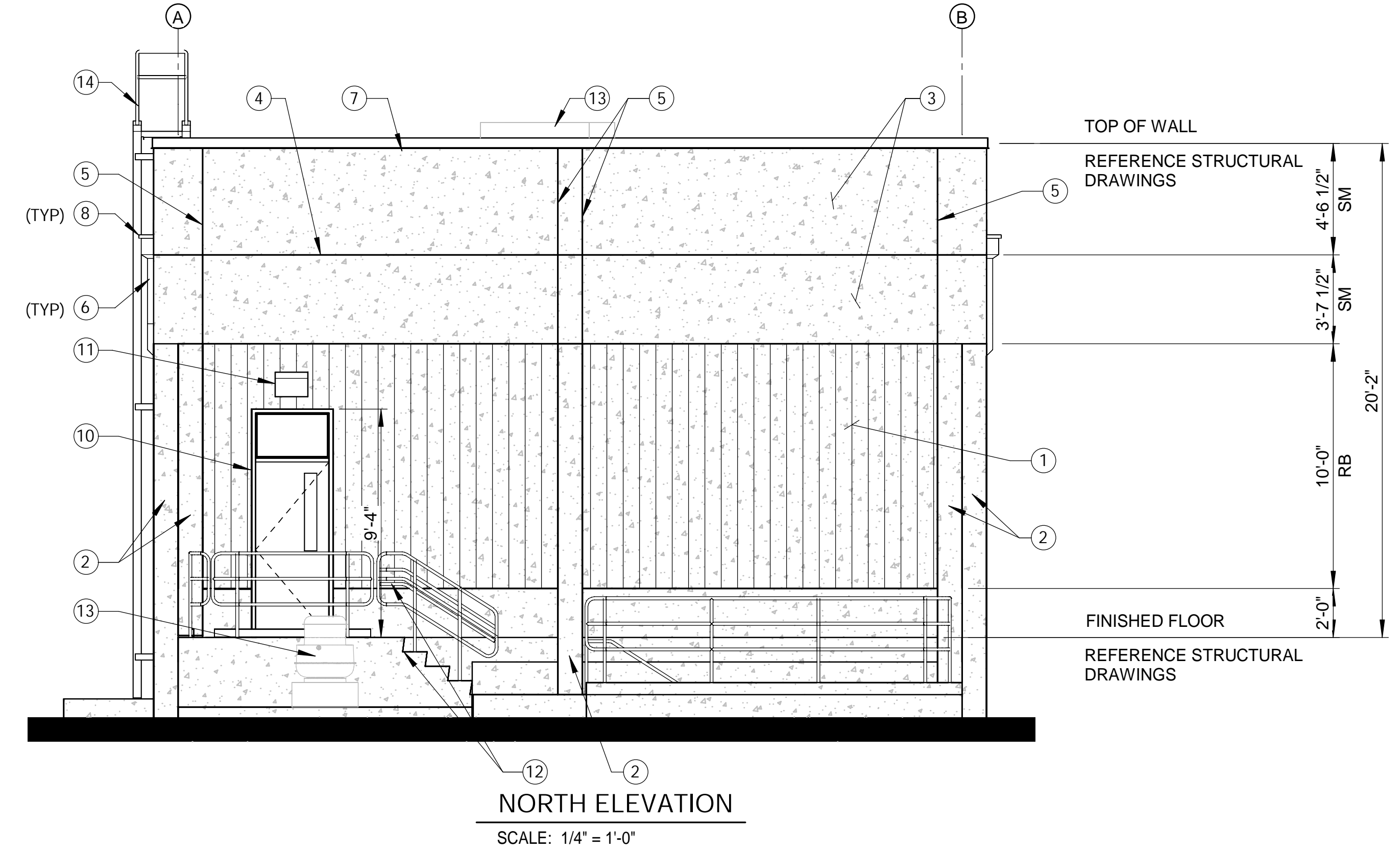
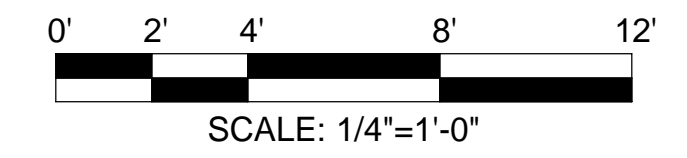
DIGESTER GAS FACILITIES REHABILITATION

PLANT 2 DIGESTER GAS  
 COMPRESSORS AND FLARES  
 ELECTRICAL BUILDING - ROOF PLAN

PROJECT NO. J-124  
 DRAWING NO. 22A1003  
 OF 967



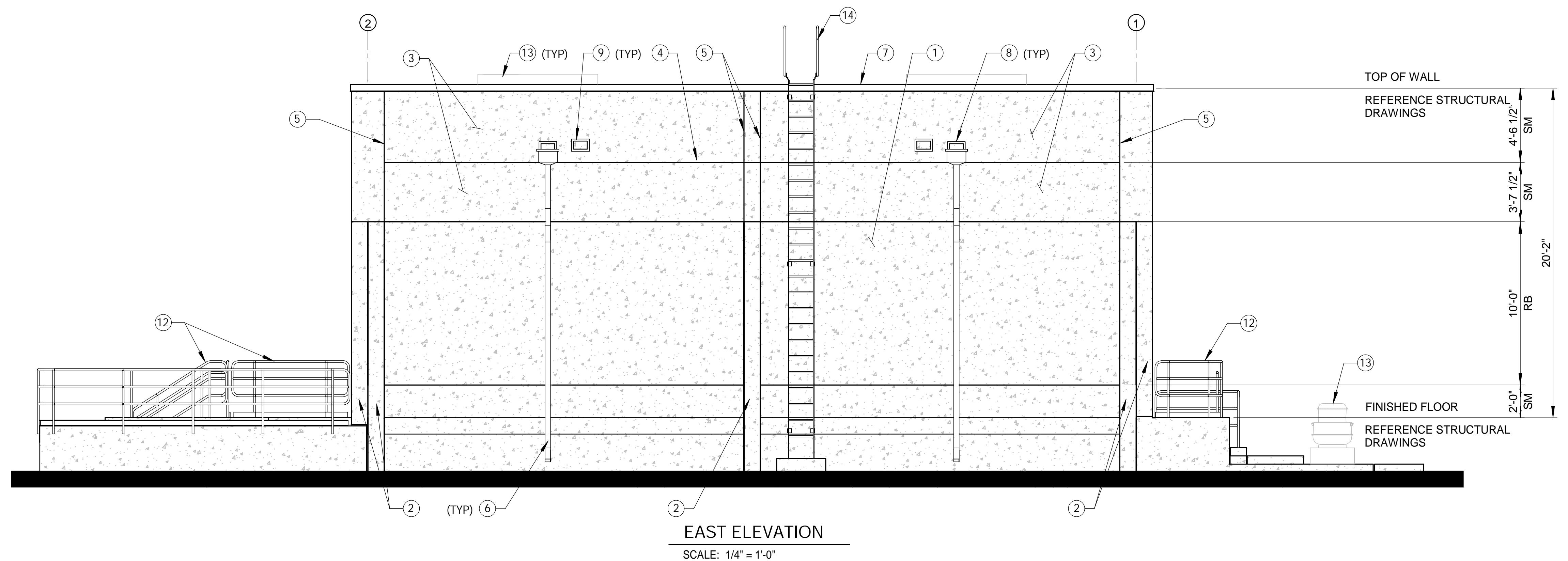
03/11/2026



**NORTH ELEVATION**  
SCALE: 1/4" = 1'-0"

- GENERAL NOTES:**
- FOR FRP DOOR, FRAME, OVERHEAD COILING DOOR, AND HARDWARE INFORMATION, REFERENCE ARCHITECTURAL DOOR SCHEDULE ON DRAWING 00A6002
  - FOR STRUCTURAL DETAILS, REFERENCE "S" DRAWINGS
  - FOR MECHANICAL DETAILS, REFERENCE "M" DRAWINGS
  - FOR HVAC DETAILS, REFERENCE "H" DRAWINGS
  - FOR ELECTRICAL DETAILS, REFERENCE "E" DRAWINGS

- KEY NOTES:**
- CAST-IN-PLACE CONCRETE WALL PER STRUCTURAL DRAWINGS. SMOOTH-FACE FINISH UNLESS OTHERWISE NOTED AS RIBBED CONCRETE (RB)
  - CAST-IN-PLACE CONCRETE PILASTER
  - CAST-IN-PLACE CONCRETE WALL, CANTILEVER PAST WALL BELOW
  - CONSTRUCTION JOINT
  - V-GROOVE JOINT
  - DOWNSPOUT, REFERENCE TYPICAL DETAIL AG227/TYP
  - PREFABRICATED METAL COPING
  - PRIMARY ROOF SCUPPER & CONDUCTOR HEAD THROUGH WALL
  - OVERFLOW ROOF SCUPPER THROUGH WALL
  - DOOR & FRAME
  - WALL MOUNTED EXTERIOR LIGHT FIXTURE
  - REFERENCE STRUCTURAL DRAWINGS FOR GUARDRAIL, HANDRAIL, AND STAIR REQUIREMENTS
  - REFERENCE "H" DRAWINGS FOR UNIT REQUIREMENTS
  - LADDER, REFERENCE STRUCTURAL DRAWINGS



**EAST ELEVATION**  
SCALE: 1/4" = 1'-0"

FILE: Autodesk Docs://68521 - J-124 Digester Gas Facilities Rehab/J-124 - New Plant 2 Flare Control Building - Architectural.rvt

MARK	DESCRIPTION	DATE	APPR.

DESIGNED BY: HOLLENBAUGH, MICHELE - 01/26  
 DRAWN BY: VALDEZ, FERNANDO - 01/26  
 CHECKED BY: ANTUNOVICH, JANESSA - 01/26

LINE IS 2 INCHES AT FULL SIZE (IF NOT 2'-SCALE ACCORDINGLY)

07/31/2024

DS3  
JANUARY 2026

NOT FOR CONSTRUCTION

ORANGE COUNTY SANITATION DISTRICT

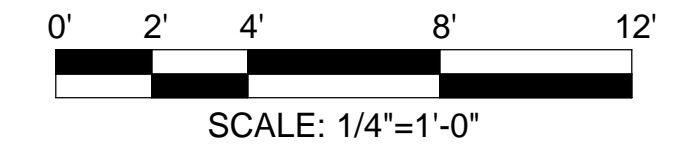
DIGESTER GAS FACILITIES REHABILITATION

PLANT 2 DIGESTER GAS COMPRESSORS AND FLARES ELECTRICAL BUILDING - ELEVATIONS 1

PROJECT NO. J-124  
DRAWING NO. 22A2001  
OF 967



03/11/2026

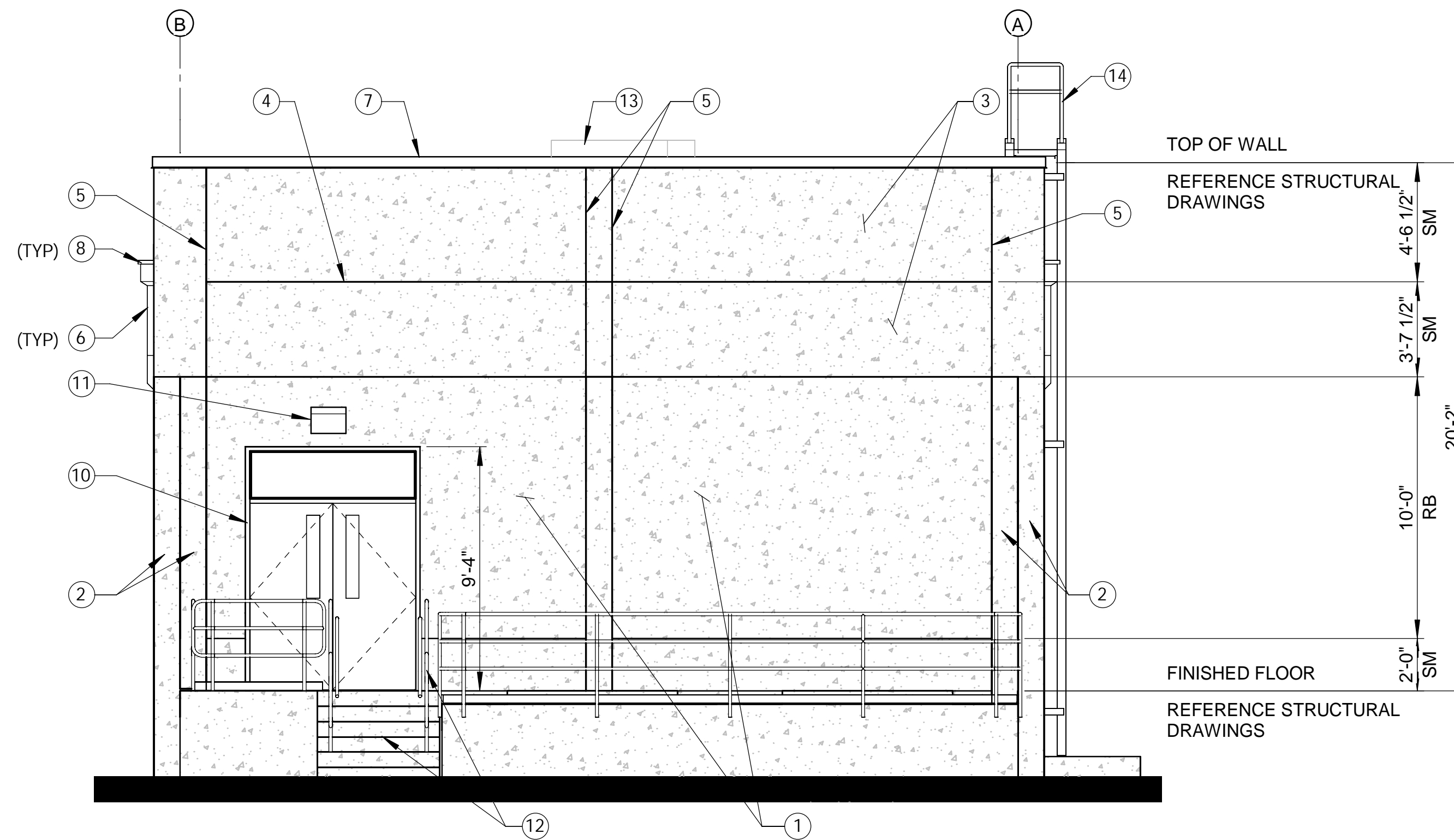


GENERAL NOTES:

- FOR FRP DOOR, FRAME, OVERHEAD COILING DOOR, AND HARDWARE INFORMATION, REFERENCE ARCHITECTURAL DOOR SCHEDULE ON DRAWING 00A6002
- FOR STRUCTURAL DETAILS, REFERENCE "S" DRAWINGS
- FOR MECHANICAL DETAILS, REFERENCE "M" DRAWINGS
- FOR HVAC DETAILS, REFERENCE "H" DRAWINGS
- FOR ELECTRICAL DETAILS, REFERENCE "E" DRAWINGS

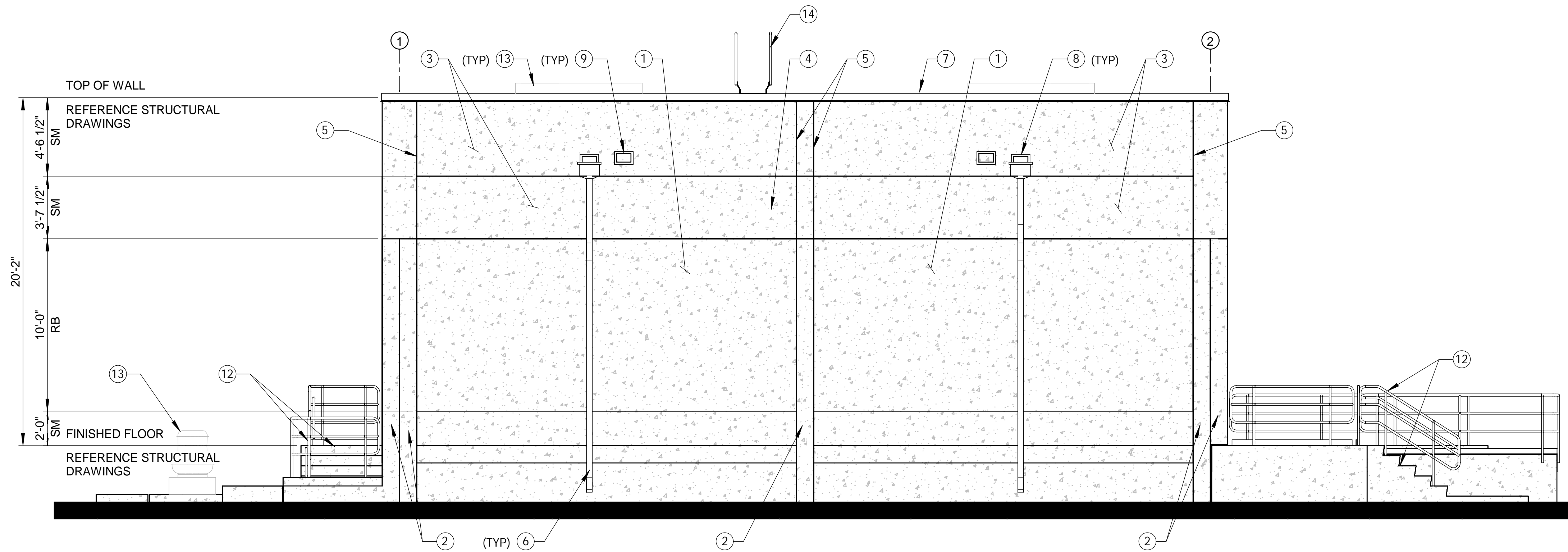
KEY NOTES:

- CAST-IN-PLACE CONCRETE WALL PER STRUCTURAL DRAWINGS. SMOOTH-FACE FINISH UNLESS OTHERWISE NOTED AS RIBBED CONCRETE (RB)
- CAST-IN-PLACE CONCRETE PILASTER
- CAST-IN-PLACE CONCRETE WALL, CANTILEVER PAST WALL BELOW
- CONSTRUCTION JOINT
- V-GROOVE JOINT
- DOWNSPOUT, REFERENCE TYPICAL DETAIL AG227/TYP
- PREFABRICATED METAL COPING
- PRIMARY ROOF SCUPPER & CONDUCTOR HEAD THROUGH WALL
- OVERFLOW ROOF SCUPPER THROUGH WALL
- DOOR & FRAME
- WALL MOUNTED EXTERIOR LIGHT FIXTURE
- REFERENCE STRUCTURAL DRAWINGS FOR GUARDRAIL, HANDRAIL, AND STAIR REQUIREMENTS
- REFERENCE "H" DRAWINGS FOR UNIT REQUIREMENTS
- LADDER, REFERENCE STRUCTURAL DRAWINGS



SOUTH ELEVATION

SCALE: 1/4" = 1'-0"



WEST ELEVATION

SCALE: 1/4" = 1'-0"

DESIGNED BY: HOLLENBAUGH, MICHELE - 01/26  
 DRAWN BY: VALDEZ, FERNANDO - 01/26  
 CHECKED BY: ANTUNOVICH, JANESSA - 01/26

LINE IS 2 INCHES  
 AT FULL SIZE  
 (IF NOT 2'-SCALE ACCORDINGLY)

07/31/2024

DS3  
JANUARY 2026

NOT FOR  
CONSTRUCTION



DIGESTER GAS FACILITIES REHABILITATION  
 PLANT 2 DIGESTER GAS  
 COMPRESSORS AND FLARES  
 ELECTRICAL BUILDING - ELEVATIONS 2

PROJECT NO. J-124

DRAWING NO. 22A2002  
 OF 967

MARK	DESCRIPTION	DATE	APPR.