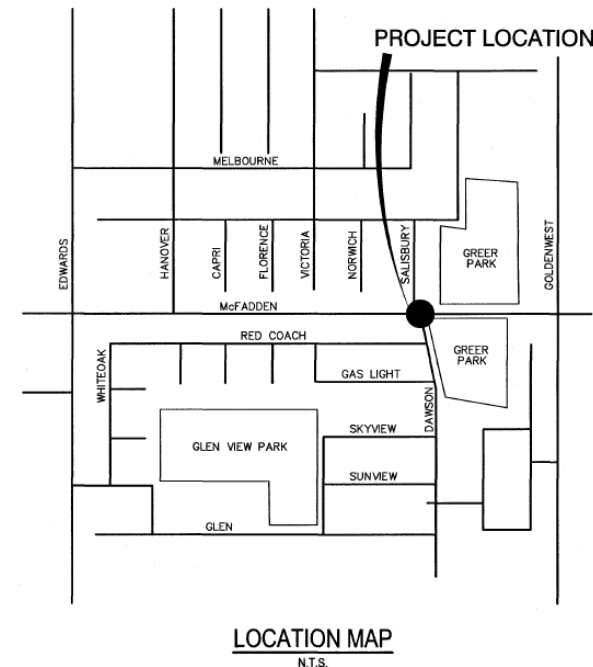




MCFADDEN SEWER LIFT STATION REPLACEMENT (CC1610)

SOUTHERN CALIFORINA GAS COMPANY GRANT OF EASEMENT FOR NEW GAS LINE EXTENSION



Project Purpose

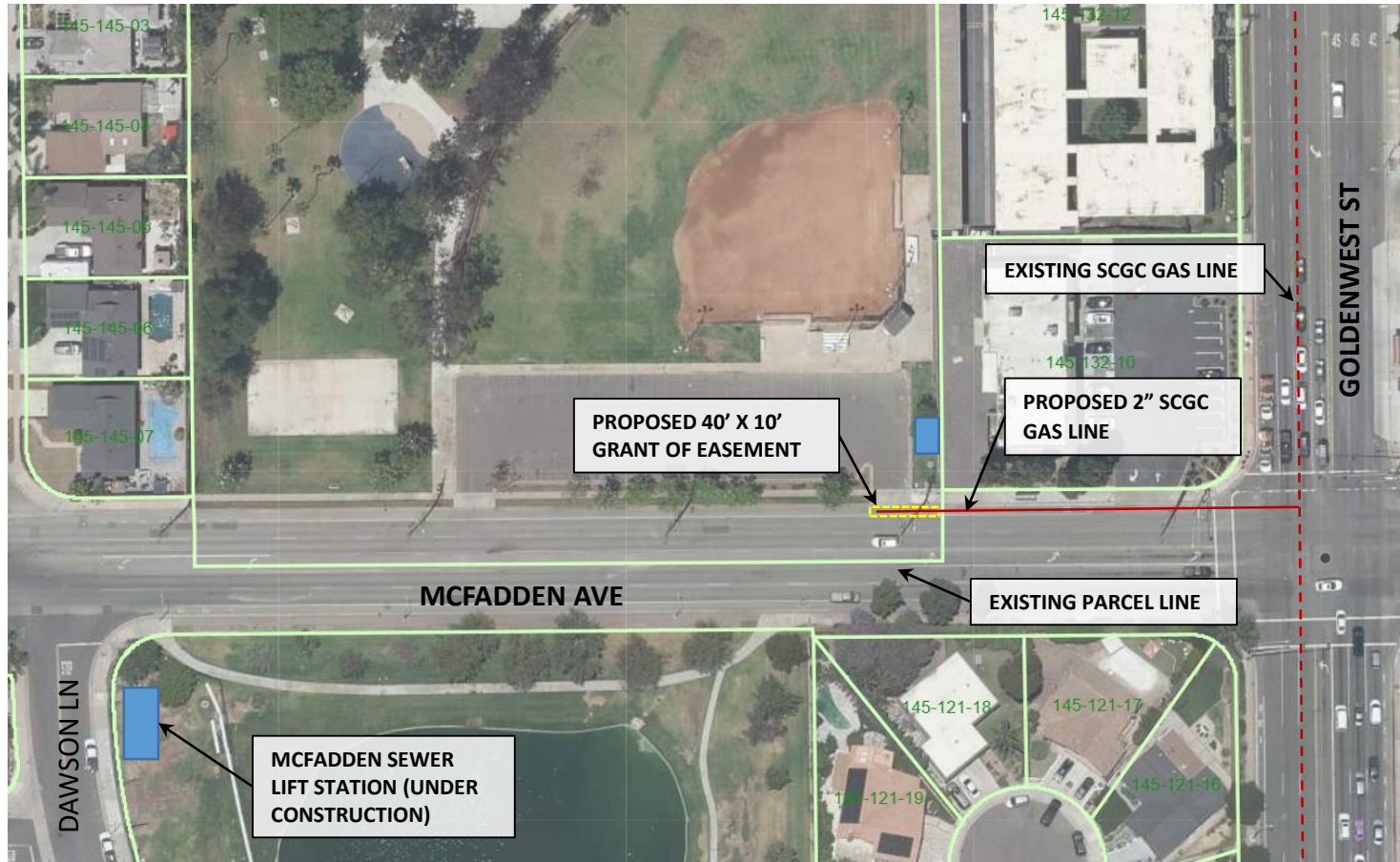
To extend SCGC gas line to supply natural gas to emergency generator for
McFadden Sewer Lift Station (CC1610)



Gas Powered Generator Purpose:

- Provides critical back up power during an electrical power outage.
- Allows sewer lift station pumps and equipment to continue to operate without interruption.
- Prevents local area from sanitary sewage overflow, spills and flooding.
- Prevents sewerage spill fines issued by Santa Ana Regional Water Quality Control.
- Increases response time compared to manual generator set up by staff.

Grant of Easement Request



NORTH GREER PARK - 6900 BRUNSWICK DRIVE

Analysis:

- New 2-inch gas line extension required to supply natural gas to emergency generator.
- North Greer Park existing parcel line extends to McFadden Street centerline.
- Existing SCGC Franchise Agreement defines public right of way as public streets, ways, alleys and places, state highway and freeways.
- To comply with Franchise Agreement, SCGC requests Grant of Easement to construct, access, and maintain gas line within a 40'x10' easement.

Questions?

