
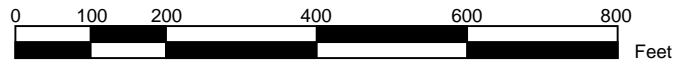



Legend

-  Pits
-  Lagoon Borders
-  Former Lagoon Boundaries in 1958
-  Ascon Landfill Site Boundaries

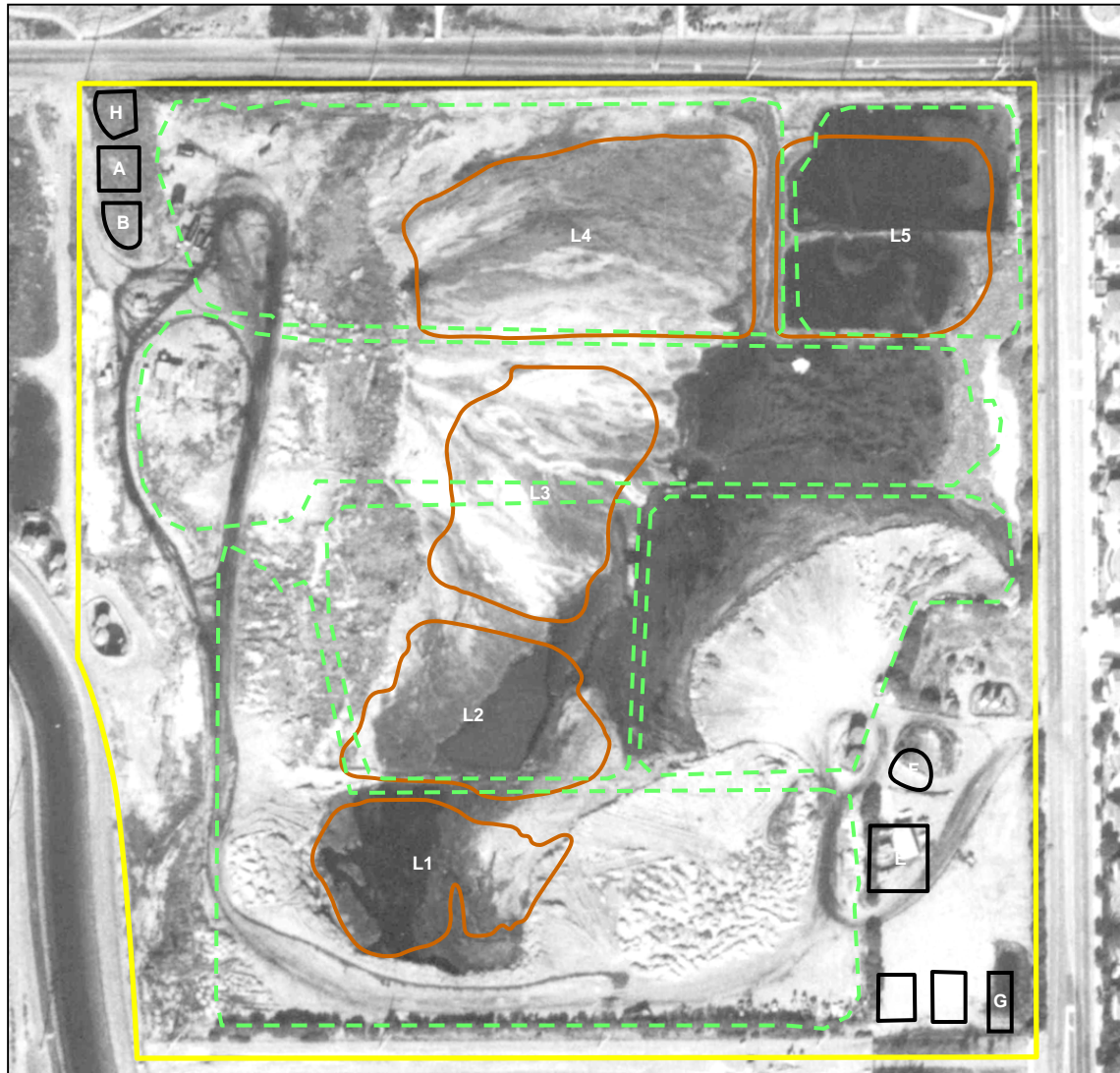


Site Aerial Photograph -- 1967		Figure 1.3-1g
Revised Feasibility Study Ascon Landfill Site, Huntington Beach, California		September 2007
		



Site Aerial Photograph -- 1972


Figure 1.3-1h



Legend

- Pits
- Lagoon Borders
- Former Lagoon Boundaries in 1958
- Ascon Landfill Site Boundaries

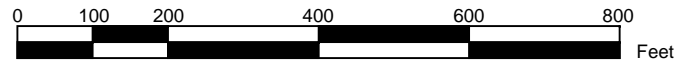
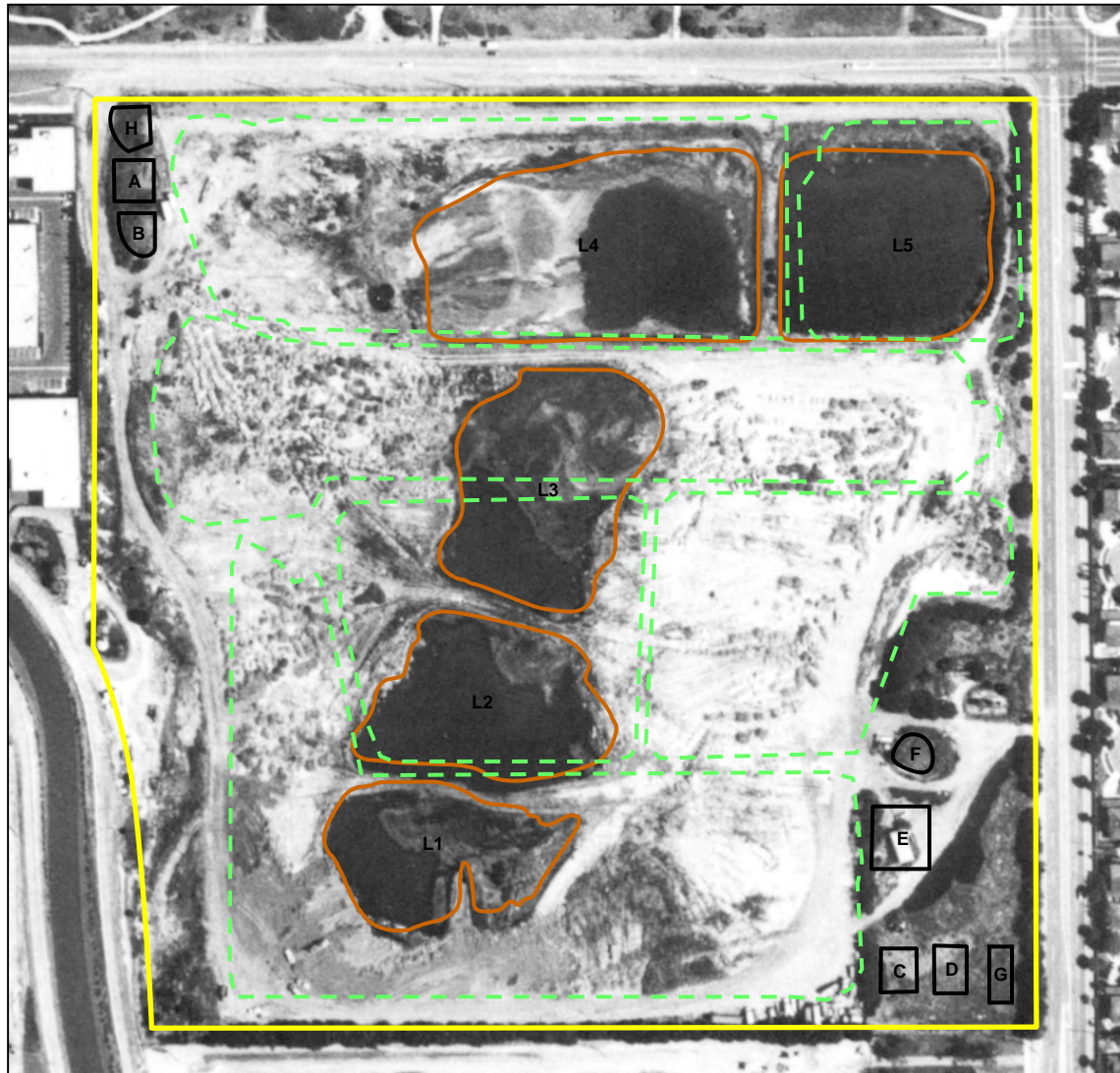


Site Aerial Photograph -- 1976		Figure 1.3-1i
Revised Feasibility Study Ascon Landfill Site, Huntington Beach, California		September 2007
		



Site Aerial Photograph -- 1979

Figure 1.3-1j

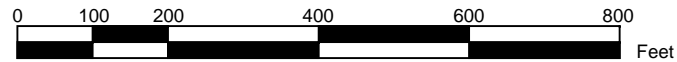
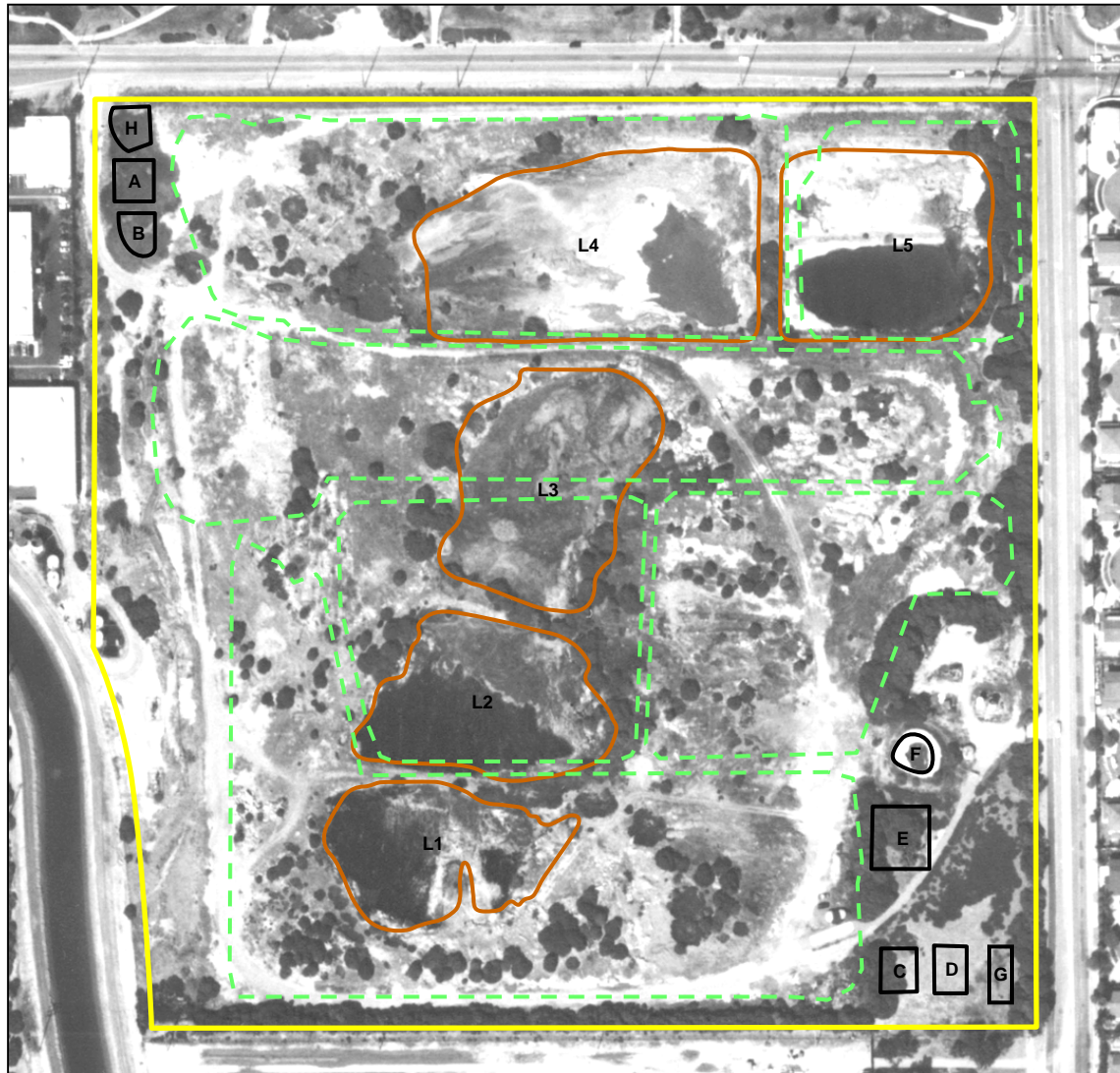


Legend





-  Pits
-  Lagoon Borders
-  Former Lagoon Boundaries in 1958
-  Ascon Landfill Site Boundaries

Site Aerial Photograph -- 1983

Figure 1.3-1k



Legend


-  Pits
-  Lagoon Borders
-  Former Lagoon Boundaries in 1958
-  Ascon Landfill Site Boundaries

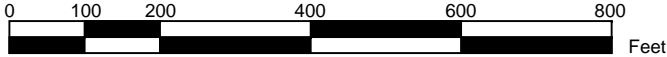
Site Aerial Photograph -- 1999


Figure 1.3-11

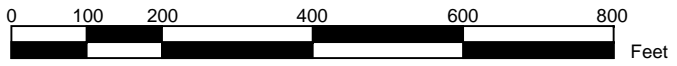


Legend




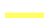
-  Pits
-  Lagoon Borders
-  Former Lagoon Boundaries in 1958
-  Ascon Landfill Site Boundaries




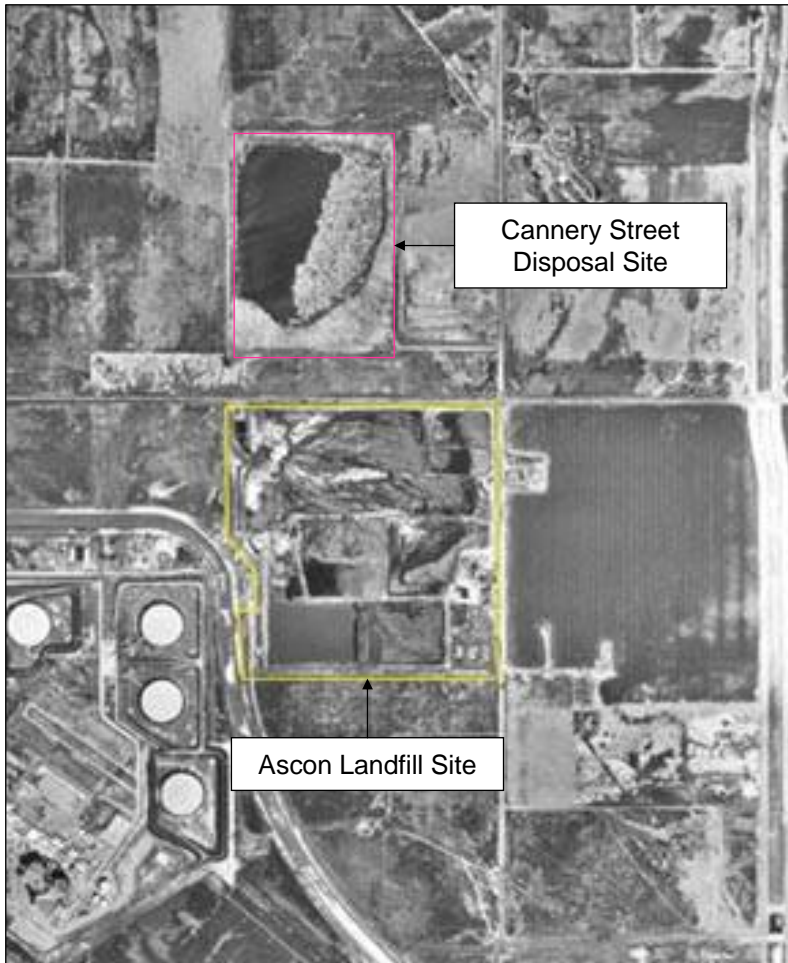
Site Aerial Photograph -- 2003		Figure 1.3-1m
Revised Feasibility Study Ascon Landfill Site, Huntington Beach, California		September 2007 



Legend

-  Pits
-  Lagoon Borders
-  Former Lagoon Boundaries in 1958
-  Ascon Landfill Site Boundaries

Site Aerial Photograph -- 2006		Figure 1.3-1n
Revised Feasibility Study Ascon Landfill Site, Huntington Beach, California		September 2007
		



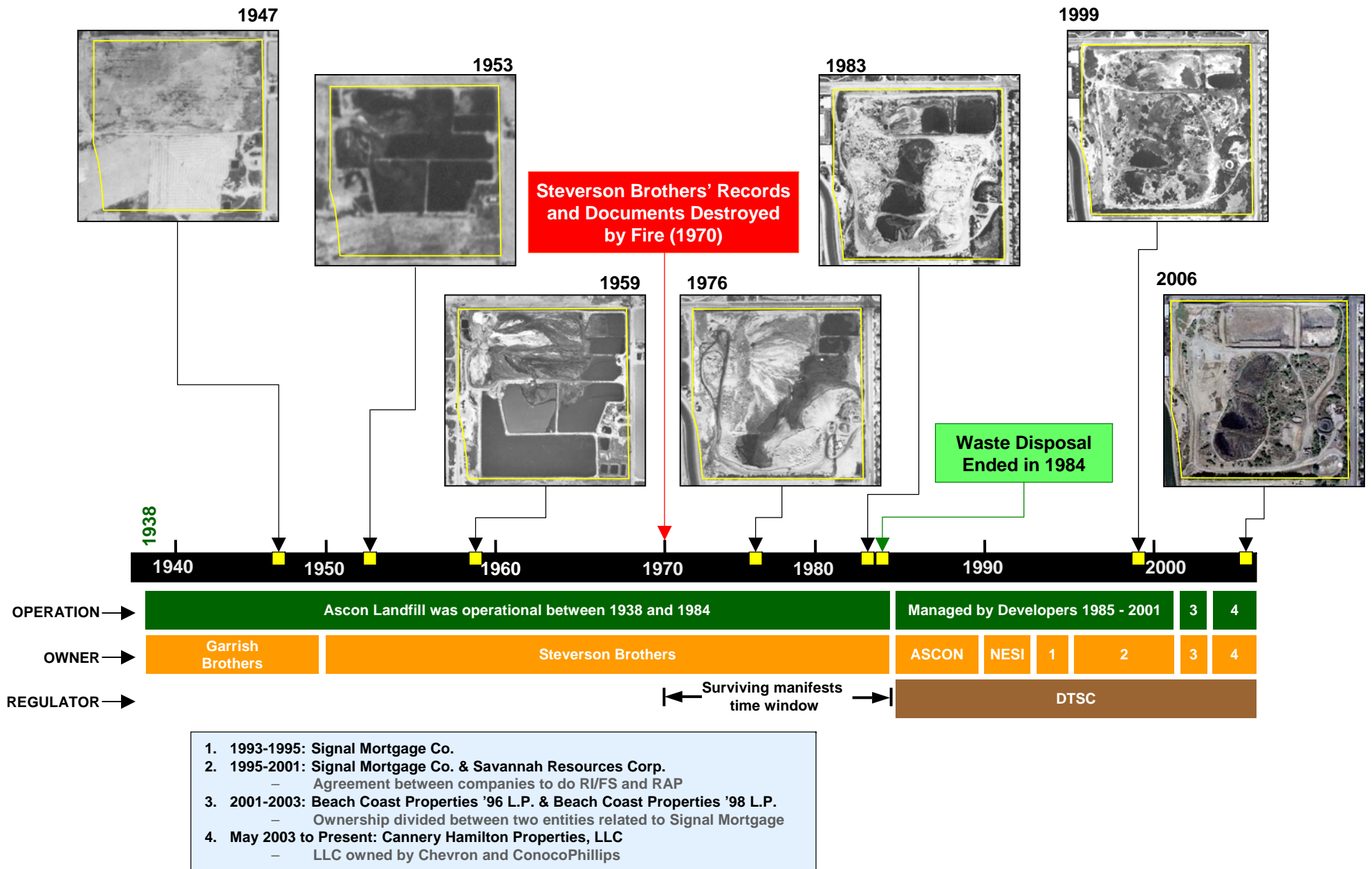
1961



1967

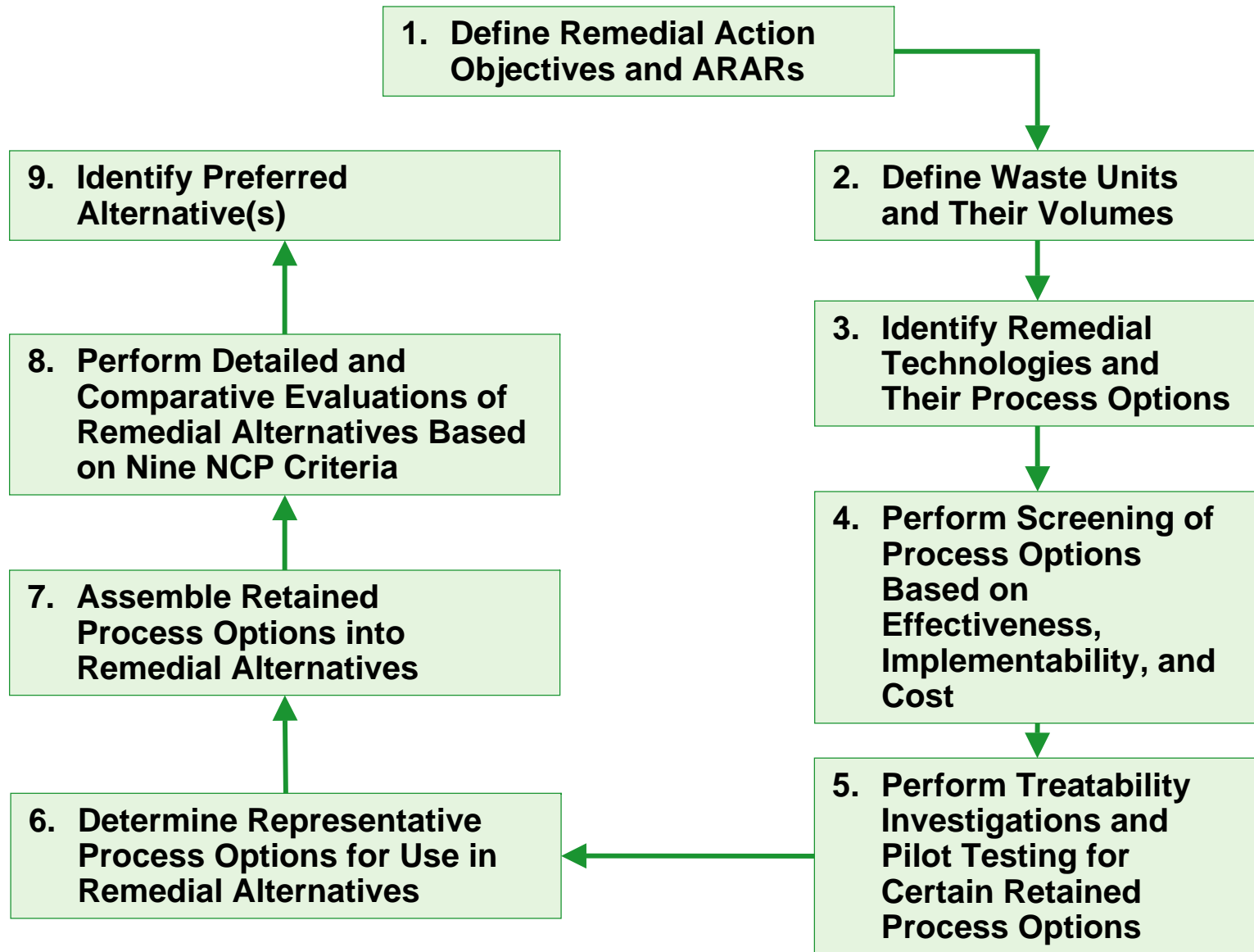
Cannery Street Disposal Site

Figure 1.3-2



Site History - Site Aerial Characteristics with Hauler and Waste Manifest Time Frames

Figure 1.4-1



The Feasibility Study Process

Figure 1.7-1