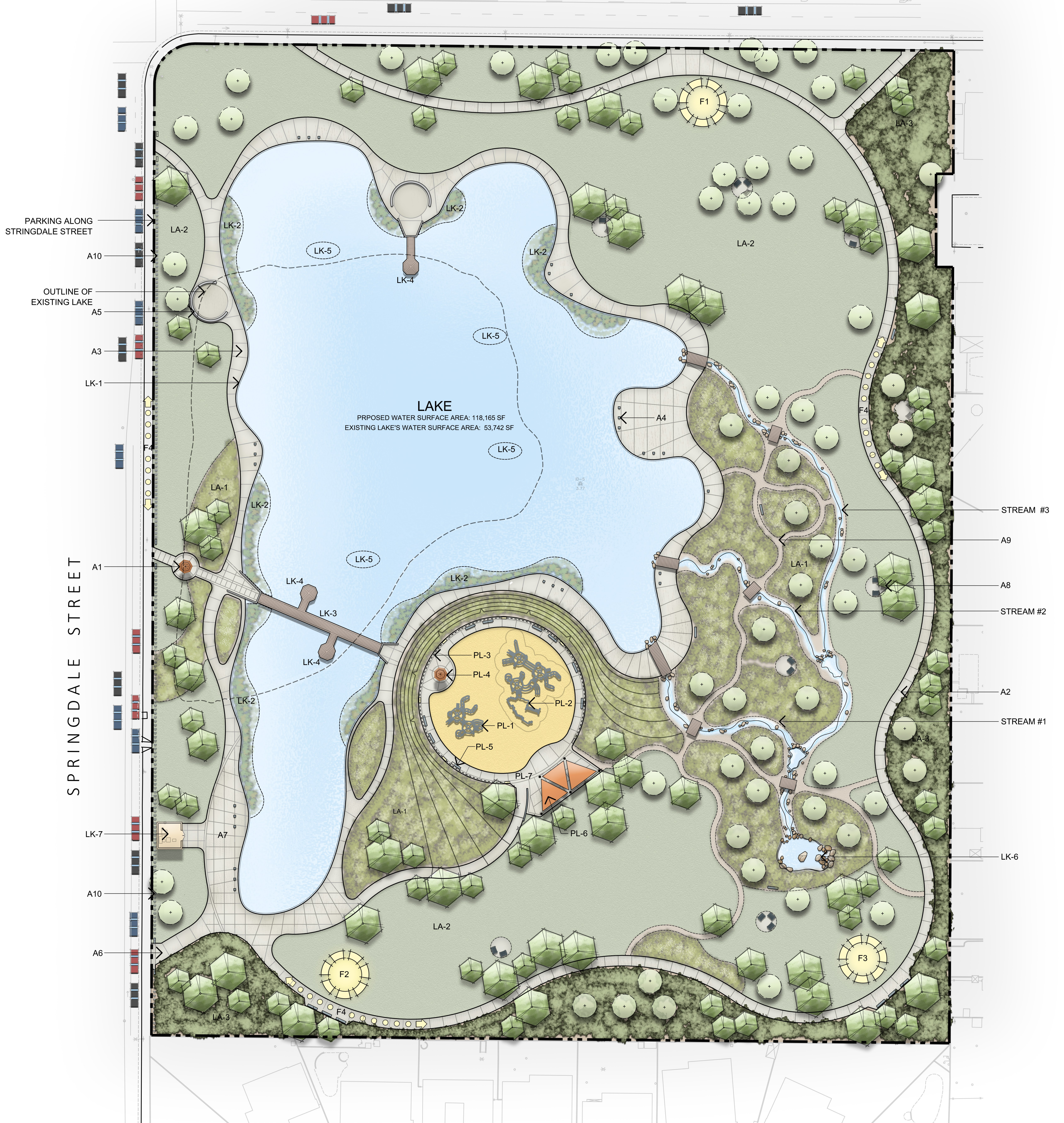


HEIL AVENUE



LEGEND

A - AMENITIES

SYMBOL	KEY	DESCRIPTION
	A1	INFORMATION KIOSK
	A2	PAVED WALKWAY, 8' wide (ADA COMPLIANT)
	A3	ACCESSIBLE LAKE'S EDGE & WALK
	A4	LAKESIDE SEAT BLOCKS
	A5	SEAT WALL
	A6	VEHICLE ACCESS DRIVE
	A7	PAVED SPACE TO ACCOMMODATE LAKE & PARK SERVICE VEHICLES FOR MAINTENANCE AND PARK EVENTS
	A8	SEATING, LOUNGING & SOCIALIZING
	A9	MEANDERING TRAIL (DECOMPOSED GRANITE SURFACE)
	A10	7' H. TUBE STEEL FENCE

F - FITNESS STATIONS

KEY	DESCRIPTION
F1	FITNESS STATIONS - AREA 1
F2	FITNESS STATIONS - AREA 2
F3	FITNESS STATIONS - AREA 3
F4	PERIMETER WALKING & EXERCISE PATH - 1/2 MILE LOOP

PL - PLAYGROUNDS

KEY	DESCRIPTION
PL-1	CHILDREN PLAYGROUND (AGES 2-5)
PL-2	CHILDREN PLAYGROUND (AGES 5-12)
PL-3	BARRIER FENCING
PL-4	PLAYGROUND ACCENT COLUMN
PL-5	PLAYGROUND SEATING
PL-6	SHADED SEATING AREA
PL-7	CONTROLLED POINT OF ENTRY AND EXIT

LK - LAKE IMPROVEMENTS

KEY	DESCRIPTION
LK-1	PROPOSED LAKE'S EDGE
LK-2	AQUATIC PLANT SHELF
LK-3	BRIDGE
LK-4	FISHING DOCK
LK-5	ARTIFICIAL REEF
LK-6	HEAD POND & BIOFILTER
LK-7	LAKE EQUIPMENT ENCLOSURE

STREAM #1
STREAM #2
STREAM #3

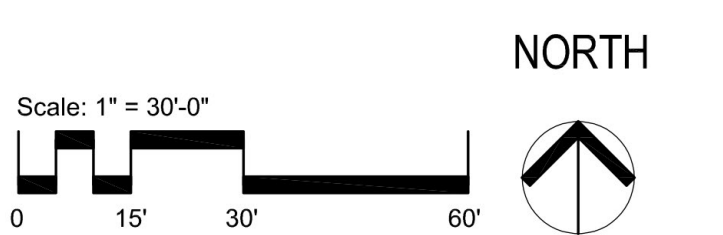
LA - LANDSCAPE

SYMBOL	KEY	DESCRIPTION
	LA-1	MEADOW GRASSES (NON-MOWABLE)
	LA-2	NATURAL GRASS (MOWABLE)
	LA-3	GREEN BUFFER - WITH PLANTS PROVIDING WILDLIFE VALUE

EXISTING TREE TO REMAIN
 PROPOSED TREE

CONCEPT A

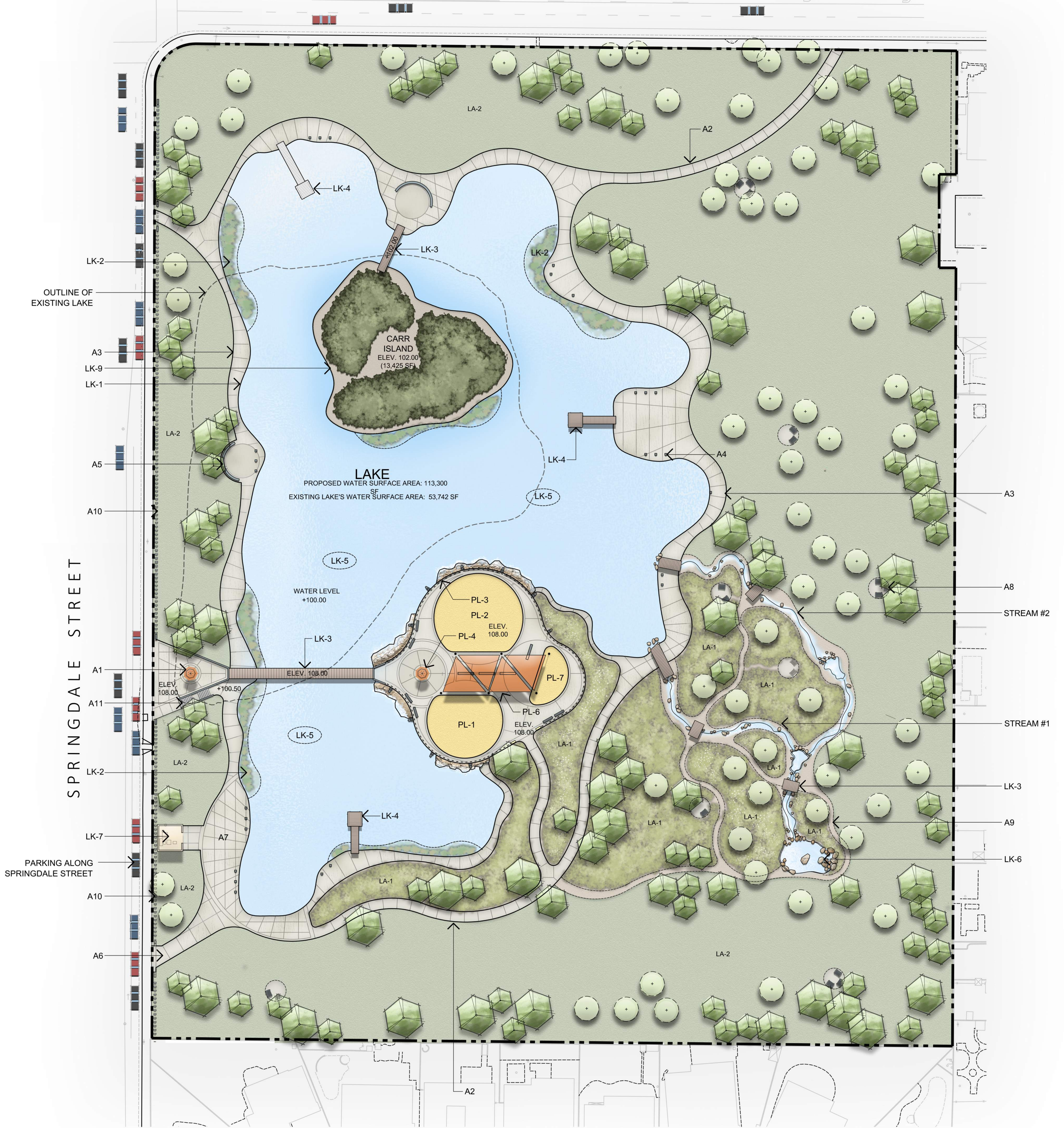
CARR PARK
CITY OF HUNTINGTON BEACH



DVP David Volz Design
Landscape Architects and Park Planners

July 2023

SHEILA AVENUE



LEGEND

A - AMENITIES

SYMBOL	KEY	DESCRIPTION
	A1	MONUMENT COLUMN w/CHRIS CARR MEMORIAL PLAQUE
	A2	WALKWAY, 8' wide (ADA COMPLIANT)
	A3	MEANDERING LAKE WALK, WIDTH VARIES, (ADA COMPLIANT)
	A4	SEAT BLOCKS
	A5	SEAT WALL
	A6	VEHICLE ACCESS DRIVE
	A7	PARK & LAKE SERVICE AREA FOR VEHICLES FOR PARK MAINTENANCE AND PARK EVENTS ONLY
	A8	PASSIVE SPACE SEATING, LOUNGING & SOCIALIZING
	A9	MEANDERING TRAIL (DECOMPOSED GRANITE SURFACE)
	A10	7' H. TUBE STEEL FENCE
	A11	STAIRS

PL - PLAYGROUNDS

KEY	DESCRIPTION
PL-1	CHILDREN PLAYGROUND (AGES 2-5)
PL-2	CHILDREN PLAYGROUND (AGES 5-12)
PL-3	BARRIER FENCING
PL-4	COLUMN
PL-5	PLAYGROUND SEATING
PL-6	SHADED SEATING AREA
PL-7	ADDITIONAL PLAY SPACE

LK - LAKE IMPROVEMENTS

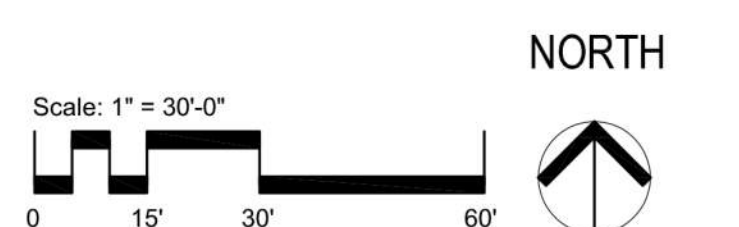
SYMBOL	KEY	DESCRIPTION
	LK-1	PROPOSED LAKE'S EDGE
	LK-2	AQUATIC PLANTS
	LK-3	BRIDGE
	LK-4	FISHING DOCK
	LK-5	ARTIFICIAL REEF
	LK-6	HEAD POND & BIOFILTER
	LK-7	LAKE EQUIPMENT ENCLOSURE
	LK-8	LARGE ROCKS STACKED TO IMPLY JETTY/SEA WALL
	LK-9	ISLAND - NO PUBLIC ACCESS

LA - LANDSCAPE

SYMBOL	KEY	DESCRIPTION
	LA-1	MEADOW GRASSES (NON-MOWABLE)
	LA-2	NATURAL GRASS (MOWABLE)
		EXISTING TREE TO REMAIN
		PROPOSED TREE

CONCEPT B

CARR PARK
CITY OF HUNTINGTON BEACH



DVP David Volz Design
Landscape Architects and Park Planners

July 2023