



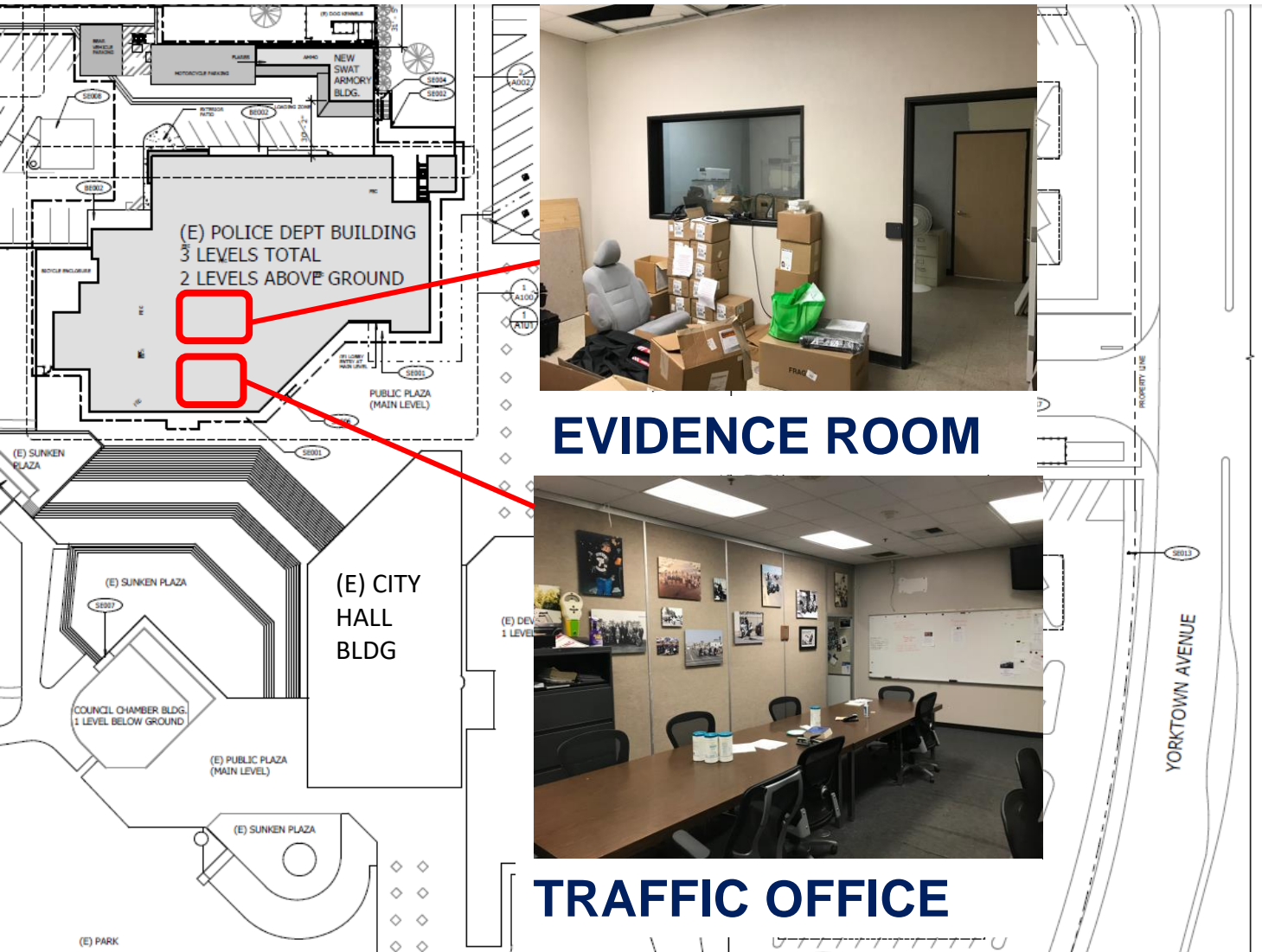
Traffic and Homeless Task Force Office Renovations Project

Table of Contents

- **Current Configuration**
- **Renovated Design**
- **Questions**



Current Configuration - Obsolete



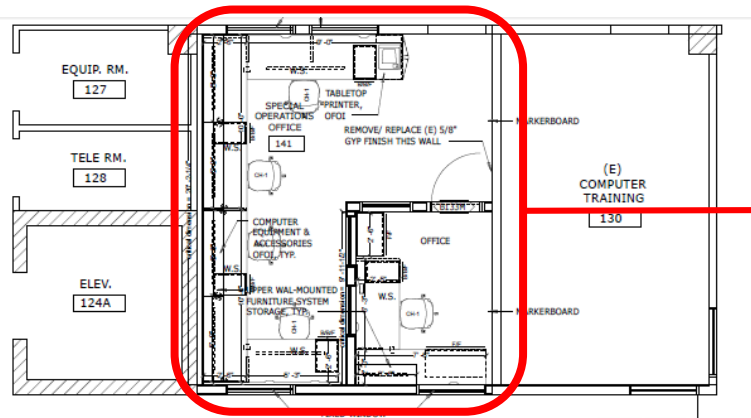
Traffic Office

- Constructed in 1971.
- Carpeting, temp wall partitions, HVAC, electrical and data systems are all outdated.
- Traffic department needs additional space and equipment.

Evidence Room

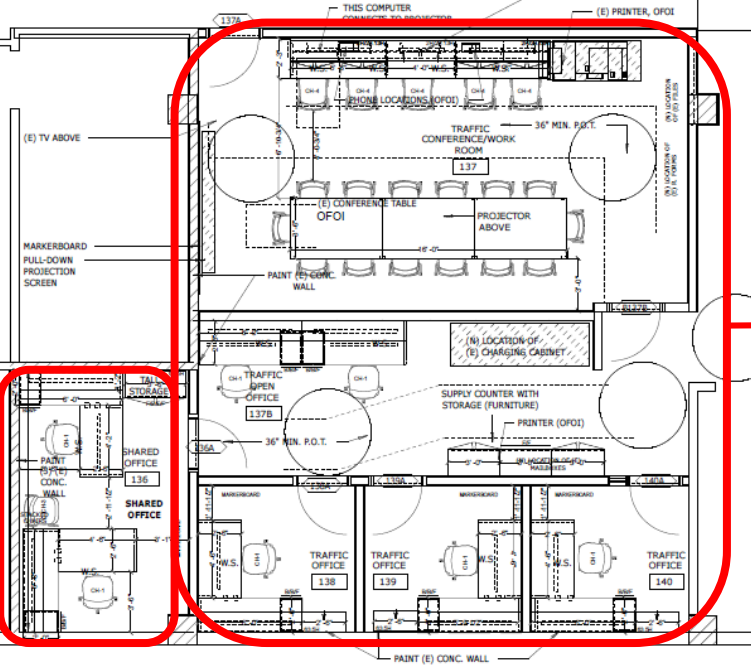
- Constructed in 1971.
- Evidence room relocated, current room not in use.
- Current wall finishes, flooring, HVAC, electrical, and data network are in poor condition.

Renovated Design



New Homeless Task Force Open Office

- Open office with 4 computers.
- New Supervisor office.
- New flooring, wall finishes, ceiling tiles, electrical, HVAC, and data network systems.



New Traffic Office

- New investigator office.
- Expanded report writing area with 5 desks.
- Renovations to entire office space involve new permanent drywall, flooring, ceiling tile, HVAC, electrical, and data network systems.

Questions?

