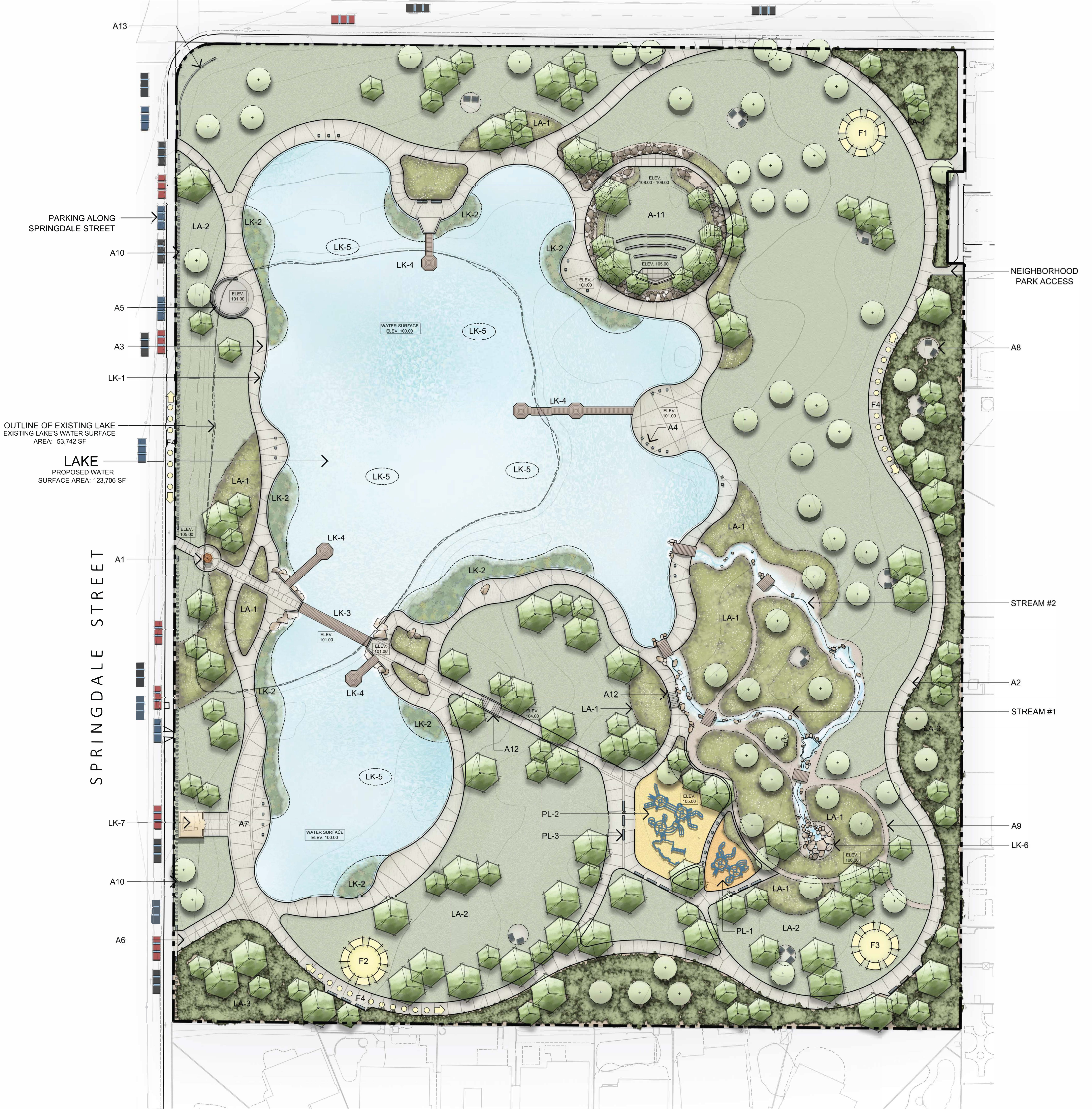


HEIL AVENUE



LEGEND

A - AMENITIES

SYMBOL	KEY	DESCRIPTION
●	A1	INFORMATION KIOSK
—	A2	PAVED WALKWAY, 10' wide (ADA COMPLIANT)
—	A3	ACCESSIBLE WALK ALONG LAKE'S PERIMETER
□	A4	LAKESIDE SEAT BLOCKS
○	A5	SEAT WALL
—	A6	VEHICLE ACCESS DRIVE
—	A7	PAVED SPACE TO ACCOMMODATE LAKE & PARK SERVICE VEHICLES FOR MAINTENANCE AND PARK EVENTS
◆	A8	SEATING, LOUNGING & SOCIALIZING
—	A9	MEANDERING TRAIL (DECOMPOSED GRANITE SURFACE)
—	A10	7" H. TUBE STEEL FENCE
—	A11	OUTDOOR SPACE FOR COMMUNITY EVENTS
—	A12	STAIRS
—	A13	PARK SIGN

F - FITNESS STATIONS

KEY	DESCRIPTION
F1	FITNESS STATIONS - AREA 1
F2	FITNESS STATIONS - AREA 2
F3	FITNESS STATIONS - AREA 3
F4	PERIMETER WALKING & EXERCISE PATH - 1/2 MILE LOOP

PL - PLAYGROUNDS

KEY	DESCRIPTION
PL-1	CHILDREN PLAYGROUND (AGES 2-5)
PL-2	CHILDREN PLAYGROUND (AGES 5-12)
PL-3	PLAYGROUND SEATING

LK - LAKE IMPROVEMENTS

SYMBOL	KEY	DESCRIPTION
—	LK-1	PROPOSED LAKE'S EDGE
—	LK-2	AQUATIC PLANTS
—	LK-3	BRIDGE
—	LK-4	FISHING DOCK
—	LK-5	ARTIFICIAL REEF
—	LK-6	HEAD POND & BIOFILTER
—	LK-7	LAKE EQUIPMENT ENCLOSURE

STREAM #1

STREAM #2

LA - LANDSCAPE

SYMBOL	KEY	DESCRIPTION
—	LA-1	MEADOW GRASSES (NON-MOWABLE)
—	LA-2	NATURAL GRASS (MOWABLE)
—	LA-3	GREEN BUFFER - WITH PLANTS PROVIDING WILDLIFE VALUE
○		EXISTING TREE TO REMAIN
●		PROPOSED TREE

PROPOSED CONCEPT PLAN

CARR PARK
CITY OF HUNTINGTON BEACH

