



City of Huntington Beach

Relinquishment Exploration Study of Pacific Coast Highway (SR-1) Overview

City Council Study Session
October 4, 2022

1

Background



- September 7, 2021 City Council directed the City Manager to conduct a Feasibility Analysis regarding the possible relinquishment of Pacific Coast Highway from Seapoint Street to the City's southern limit.
- October 2021 The Public Works Department hired Kreuzer Consulting to prepare an Exploratory Report for the Relinquishment of Pacific Coast Highway.

Purpose of Study

- Assess potential pros and cons, develop preliminary costs and identify potential liabilities.

Definition of Relinquishment

The statutory conveyance of all rights, title, interests, liability, and maintenance responsibilities of a State highway, or portion thereof, to another government entity.

2

SUPPLEMENTAL COMMUNICATION

Meeting Date: 10/4/2022

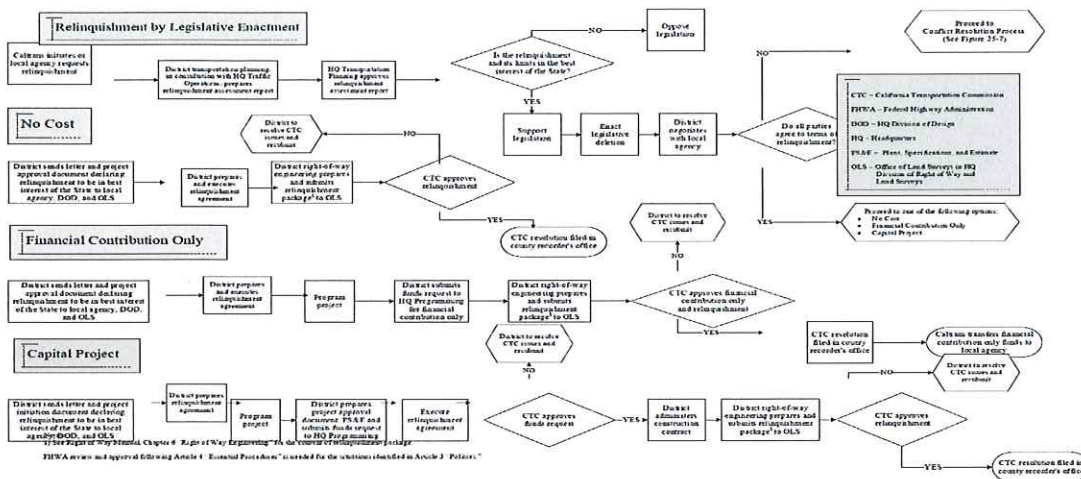
Agenda Item No.: SS #3 (22-782)

Relinquishment Process

- Process is lengthy (can take up to 5 years)

Chapter 25 – Relinquishments
Figure 25-2

Figure 25-2 Relinquishment by Legislative Enactment



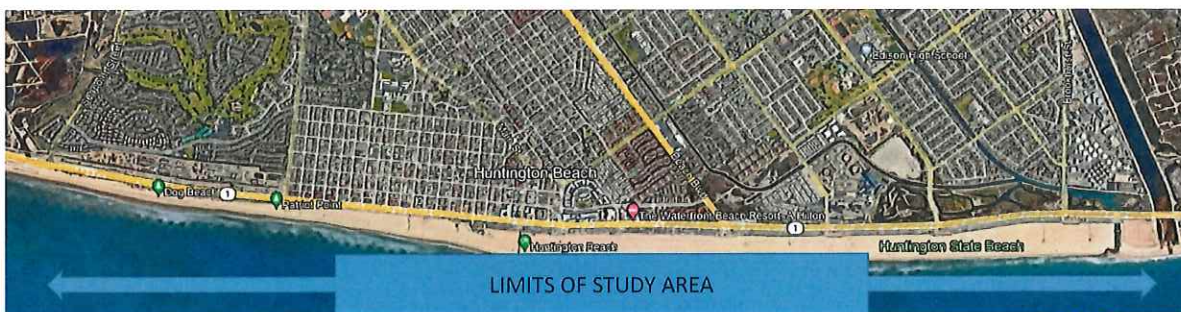
Project Development Procedures Manual

02/11/2018A

25-17

STUDY AREA

- Seapoint Street to Southern City Limit (approximately 5.6 miles)



Relinquishment Considerations

Common motivations for relinquishment

- Changing street function
- Street design flexibility
- Streetscape design features
- Control over traffic management
- Length of permit process



Cautions of relinquishment

- Operations and maintenance costs
- Staffing resources and costs
- Potential liability costs



5

Pacific Coast Highway – Current Situation

Divided into 3 segments

- Segment 1: Seapoint St. to Goldenwest St.
 - 2 lanes in each direction, 55 mph speed limit, no on-street parking
- Segment 2: Goldenwest St. to Beach Blvd.
 - Generally 2 lanes in each direction, 40-45 mph speed limit, on-street parking
- Segment 3: Beach Blvd to Southern City Limit
 - 3 lanes in each direction, 55 mph, no on-street parking
- Inventory taken into account for determining Cost Considerations: ADA Compliance, Curb Access Ramps, Curbs and Gutters, Drainage Facilities, Driveways, Landscaping, Medians, Pavement Striping, Sidewalks, Street Lighting



6

Cost Considerations

Item	Segment 1 Cost	Segment 2 Cost	Segment 3 cost	Total
Cost to bring PCH to a "State of good repair"	\$.6M	\$1.5M	\$3.5M	\$5.6M
Bring PCH up to City standards	\$5.9M	\$4.0M	\$14.1M	\$24M
Operations and Maintenance	\$12.8M	\$23.6M	\$23.6M	\$60M
Potential Future Enhancements				\$60M



7

Liability Considerations

Item	Potential Costs (Annual)
Accidents	\$24M
Claims/Settlements*	\$9.5M
Legal Expenses*	\$1.5M
Total	\$35M
<i>*These figures were derived from a recent study by the City of Laguna Beach for Relinquishment of Laguna Canyon Road</i>	



8

Questions?



9