

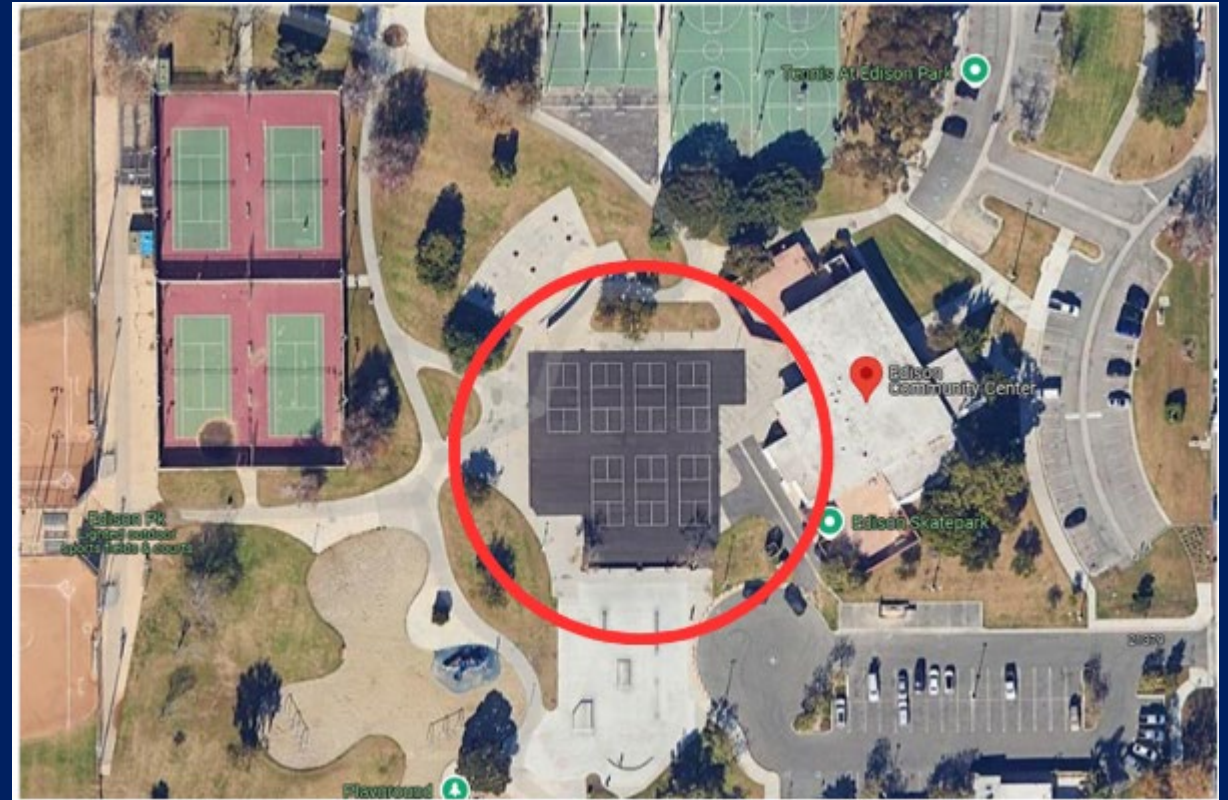


# Approval of Pickleball Rules at Edison Park Pickleball Courts

Community & Library Services Commission  
September 11, 2024

# Edison Park Pickleball Courts

- 7 dedicated temporary pickleball courts
- Established January 2024
- Open play format rules were established, consistent with rules at Worthy Park
- Community began to express a desire to change established open play format rules to Edison Community Center staff
- Community expressed desire to change to the paddle system rules format



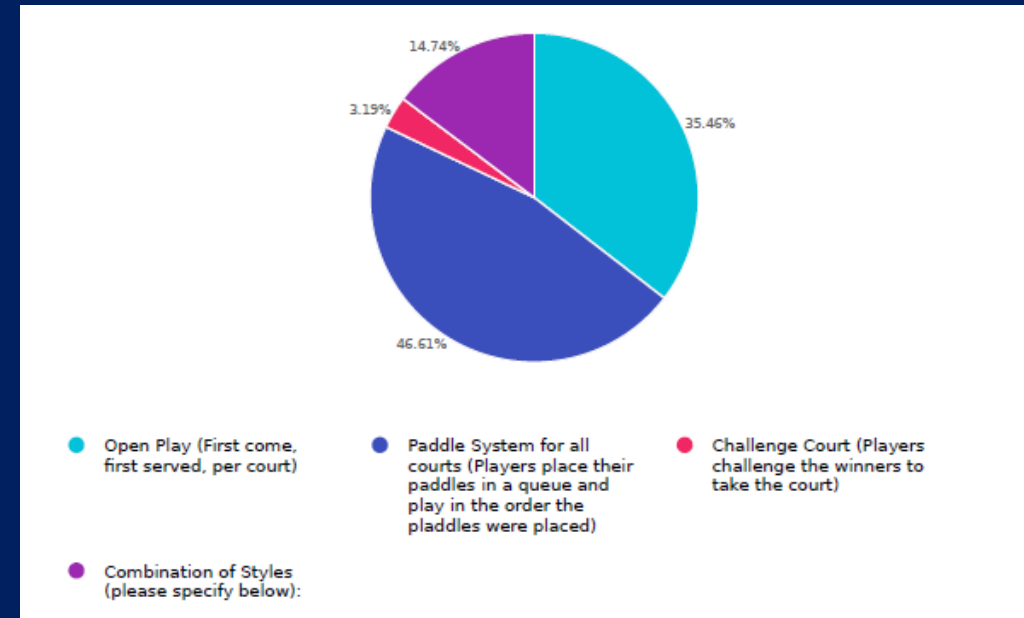
# Edison Park Pickleball Survey

- A pickleball rules survey was published on Tuesday, July 30, 2024 in response to the community's desire to change established rules.
- Four playing options were presented: open play, paddle system, challenge courts and a combination of styles.
- Players were also asked if renting the courts was desired.
- A QR code link to the survey was posted at Edison pickleball courts
- An article with the QR code link to the survey was sent out in the Surf City Weekly
- Survey responses were accepted for three weeks, ending on Wednesday, August 7, 2024



# Edison Park Pickleball Survey

- 251 total responses were received.
- Level of players
  - 25.51% of respondents were beginner players
  - 67.33% of respondents were intermediate players
  - 1.16% of respondents were advanced players
- Out of 251 responses:
  - 65.74% of respondents did not want to rent the courts out
  - 3.19% of respondents voted for the challenge courts
  - 14.74% voted for a combination of styles
  - 35.46% voted for open play format
  - **46.61% voted for the paddle system**



# Edison Park Paddle System Rules

- The largest number of respondents, 46.61%, voted for the paddle system at Edison Park Pickleball Courts
- In response, the Community & Library Services Department would like to move forward and establish the paddle system at Edison Park pickleball courts



# Edison Park Paddle System Rules

- The proposed paddle system rules:
  - Players will place their paddle in designated area to form a single queue for all courts. The paddles are stacked in the order they arrive.
  - When a court becomes available, the next four paddles in line are used to form the next group of players.
  - Games are played to 11 points, win by 2. When the game ends, the next group of players (as determined by the next four paddles in line) takes the court. A warm-up period of 2 minutes is allowed before the next game starts.





# Edison Park Paddle System Rules

- The proposed paddle system rules continued:
  - After finishing a game, players place their paddles back in the queue if they wish to play again. The paddles are placed at the end of the line to ensure everyone gets a fair turn.
  - All players are expected to respect the paddle queue and wait their turn. Doubles play is encouraged and mandatory when others are waiting.
  - The paddle system is designed to accommodate players of all levels, from beginners to advanced to ensure that everyone has an opportunity to play and improve their skills.



# Questions?

