

SITE NAME: HTBC1 05A
 SITE NUMBER: HTBC1_005
 PROJECT: CRAN/ SMALL CELL
 USID: 213723
 PACE: MRLOS051776



POLE TYPE: (N) WOOD UTILITY POLE
 POLE ID #: C5355Y
 SITE ADDRESS: 90 HUNTINGTON ST
 HUNTINGTON BEACH, CA 92648

ALL WORK AND MATERIALS SHALL BE PERFORMED AND INSTALLED IN ACCORDANCE WITH THE CURRENT EDITIONS OF THE FOLLOWING CODES AS ADOPTED BY THE LOCAL GOVERNING AUTHORITIES. NOTHING IN THESE PLANS IS TO BE CONSTRUCTED TO PERMIT WORK NOT CONFORMING TO THESE CODES.

- 2016 CALIFORNIA ADMINISTRATIVE CODE
- 2016 CALIFORNIA BUILDING CODE
- 2016 CALIFORNIA ELECTRIC CODE
- 2016 CALIFORNIA MECHANICAL CODE
- 2016 CALIFORNIA PLUMBING CODE
- 2016 CALIFORNIA FIRE CODE
- ANY LOCAL BUILDING CODE AMENDMENTS TO THE ABOVE
- CITY/COUNTY ORDINANCES

HANDICAP REQUIREMENTS:
 FACILITY IS UNMANNED AND NOT FOR HUMAN HABITATION. HANDICAPPED ACCESS NOT REQUIRED IN ACCORDANCE WITH CALIFORNIA ADMINISTRATIVE STATE CODE PART 2, TITLE 24, CHAPTER 11B, SECTION 1103B.

CODE COMPLIANCE

THE FACILITY IS UNMANNED AND NOT FOR HUMAN HABITATION. A TECHNICIAN WILL VISIT THE SITE AS REQUIRED FOR ROUTINE MAINTENANCE. THE PROJECT WILL NOT RESULT IN ANY SIGNIFICANT DISTURBANCE OR EFFECT ON DRAINAGE; NO SANITARY SEWER SERVICE, POTABLE WATER, OR TRASH DISPOSAL IS REQUIRED AND NO COMMERCIAL SIGNAGE IS NEW.

GENERAL NOTES



Dig Alert
 Know what's below.
 Call before you dig.
 CALIFORNIA SOUTH
 Call Two Working Days Before You Dig!
 811 / 800-227-2600

DIG ALERT

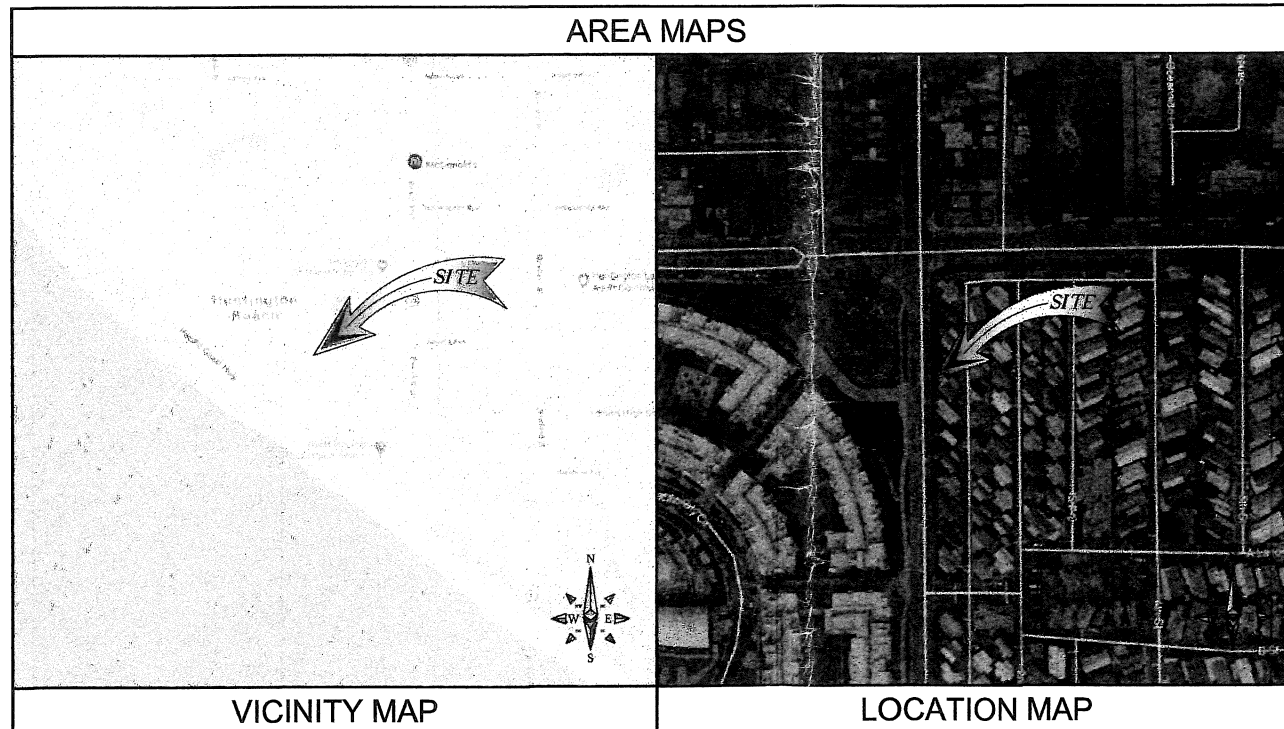
| | |
|------------------------------------|--|
| PUBLIC/PRIVATE: | PUBLIC RIGHT-OF-WAY |
| ADDRESS: | 90 HUNTINGTON ST, HUNTINGTON BEACH, CA 92648 |
| APPLICANT: | AT&T |
| ADDRESS: | 1452 EDINGER AVE TUSTIN, CA 92780 |
| LATITUDE (NAD 83): | 33.65896 |
| LONGITUDE (NAD 83): | -117.99485 |
| LATLONG TYPE: | NAD-83 |
| GROUND ELEVATION (NAVD 88): | +25' |
| JURISDICTION: | CITY OF HUNTINGTON BEACH |
| CURRENT ZONING: | PUBLIC RIGHT OF WAY |
| PROPOSED USE: | UNMANNED TELECOMMUNICATIONS |
| POWER COMPANY: | SCE |
| ADDRESS: | 1 INNOVATION WAY POMONA, CA 91768 |

PROJECT SITE INFORMATION

| | |
|---|---|
| PROJECT MANAGER: M SQUARED WIRELESS 1387 CALLE AVANZADO SAN CLEMENTE, CA 92673 | ENGINEER: M SQUARED WIRELESS 1387 CALLE AVANZADO SAN CLEMENTE, CA 92673 |
| SAC/ZONING/PERMITTING: M SQUARED WIRELESS 1387 CALLE AVANZADO SAN CLEMENTE, CA 92673 | AT&T PROJECT MANAGER: AT&T 1452 EDINGER AVE. TUSTIN, CA 92780 CONTACT: TED SUEKAWA PHONE: (714) 721-3010 EMAIL: TS4894@ATT.COM |
| RF ENGINEER: AT&T 1452 EDINGER AVE. TUSTIN, CA 92780 CONTACT: KARLO DAVINAGRACIA PHONE: (714) 566-7310 EMAIL: KD270J@ATT.COM | |

PROJECT TEAM

AREA MAPS



VICINITY MAP

LOCATION MAP

DIRECTIONS FROM AT&T OFFICE:

- DIRECTION ARE TAKEN FROM
 1452 EDINGER AVE.
 TUSTIN, CA 92780
- TURN LEFT ONTO EDINGER AVE
 - TURN LEFT ONTO STATE ROUTE 55 S
 - MERGE ONTO STATE ROUTE 55 S
 - TAKE EXIT 3 AND MERGE ONTO NEWPORT BLVD
 - TURN RIGHT ONTO VICTORIA ST
 - CONTINUE ONTO HAMILTON AVE
 - TURN LEFT ONTO NEWLAND ST
 - TURN RIGHT ONTO CA-1 N

DESTINATION WILL BE ON THE RIGHT.
 90 HUNTINGTON ST, HUNTINGTON
 BEACH, CA 92648

DRIVING DIRECTIONS

IF USING 11"x17" PLOT, DRAWING WILL BE HALF SCALE

CONSTRUCTION DRAWING

THE FOLLOWING PARTIES HEREBY APPROVE AND ACCEPT THESE DOCUMENTS & AUTHORIZE THE SUBCONTRACTOR TO PROCEED WITH THE CONSTRUCTION DESCRIBED HEREIN. ALL DOCUMENTS ARE SUBJECT TO REVIEW BY THE LOCAL BUILDING DEPARTMENT & MAY IMPOSE CHANGES OR MODIFICATIONS.

| APPROVED BY: | INITIALS: | DATE: |
|---------------------------|-----------|-------|
| AT&T RF ENGINEER: | | |
| AT&T OPERATIONS: | | |
| SITE ACQUISITION MANAGER: | | |
| PROJECT MANAGER: | | |
| ZONING VENDOR: | | |
| LEASING VENDOR: | | |
| CONSTRUCTION MANAGER: | | |
| A/E MANAGER: | | |
| PROPERTY OWNER: | | |
| UTILITY MANAGER: | | |

APPROVALS

AT&T PROPOSES TO INSTALL A NEW WIRELESS INSTALLATION LOCATED IN THE PUBLIC RIGHT OF WAY TO (N) WOOD UTILITY POLE.

THE SCOPE WILL CONSIST OF THE FOLLOWING:

- * AT&T TO REMOVE (1) EXISTING WOOD UTILITY POLE
- * AT&T TO INSTALL (1) NEW 35'-0" WOOD UTILITY POLE
- * AT&T TO INSTALL (4) NEW AT&T REMOTE RADIO UNITS
- * AT&T TO INSTALL (1) NEW AT&T OMNI-DIRECTIONAL ANTENNA
- * AT&T TO INSTALL (1) NEW AT&T ANTENNA SHROUD
- * AT&T TO INSTALL (1) NEW AT&T 1" POWER/FIBER RISER
- * AT&T TO INSTALL (1) NEW AT&T 1" COAX RISERS
- * AT&T TO INSTALL (1) NEW DISCONNECT

PROJECT DESCRIPTION

| SHEET NO: | SHEET TITLE |
|-----------|--------------------|
| T-1 | TITLE SHEET |
| GN-1 | GENERAL NOTES |
| A-1 | SITE PLAN |
| A-2 | POWER RUN PLAN |
| A-3 | ELEVATIONS |
| A-4 | ELEVATIONS |
| A-5 | SITE IMAGE |
| D-1 | DETAILS |
| D-2 | DETAILS |
| E-1 | ELECTRICAL DETAILS |

DRAWING INDEX

SUBCONTRACTOR SHALL VERIFY ALL PLANS & EXISTING DIMENSIONS & CONDITIONS ON THE JOB SITE & SHALL IMMEDIATELY NOTIFY THE ENGINEER IN WRITING OF ANY DISCREPANCIES BEFORE PROCEEDING WITH THE WORK OR BE RESPONSIBLE FOR SAME.

DO NOT SCALE DRAWINGS



330 COMMERCE, STE. 200
 IRVINE, CA 92602



DRAWN BY: TL
 CHECKED BY: MM

| REV | DATE | DESCRIPTION |
|-----|------------|-------------------|
| C | 09/24/2018 | 100% CONSTRUCTION |
| B | 05/31/18 | 100% CONSTRUCTION |
| A | 03/09/18 | 90% CONSTRUCTION |

SIGNED DATE : 05/31/2018

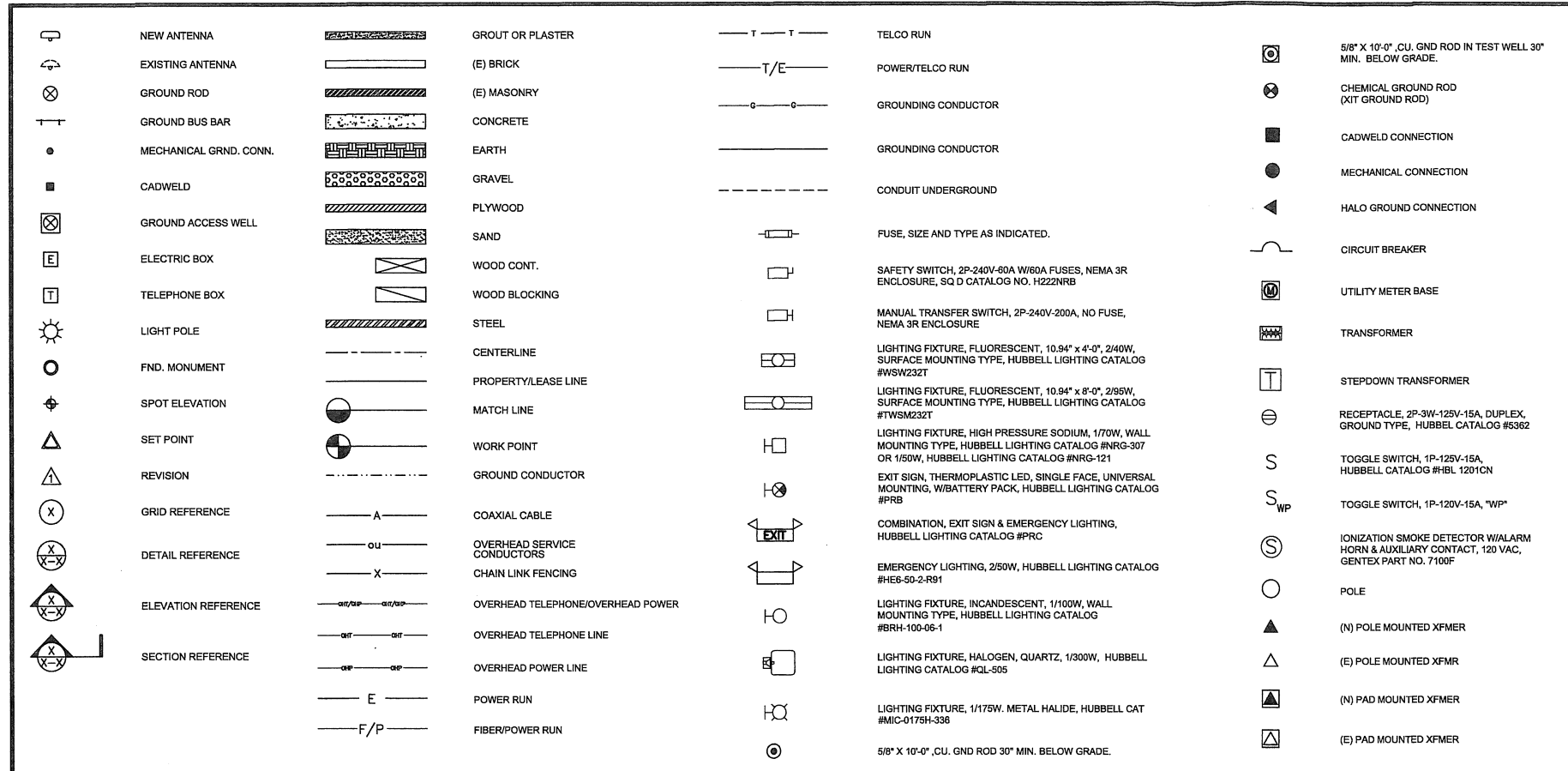
IT IS A VIOLATION OF LAW FOR ANY PERSON, UNLESS THEY ARE ACTING UNDER THE DIRECTION OF A LICENSED PROFESSIONAL ENGINEER, TO ALTER THIS DOCUMENT.

SITE ID: HTBC1 05A
 90 HUNTINGTON ST
 HUNTINGTON BEACH, CA, 92648

SHEET TITLE
 TITLE SHEET

SHEET NUMBER

T-1




ABBREVIATIONS

| | | | | | | | | | | | | | | | | | | | | | | | | | | | | | | | | | | | | | | | | | | | | | | | | | | | | | | | | | | | | | | | | | | | | | | | | | | | | | | | | | | | | | | | | | | | | | | | | | | | | | | | | | | | | | | | | | | | | | | | | | | | | | | | | | | | | | | | | | | | | | | | | | | | | | | | | | | | | | | | | | | | | | | | | | | | | | | | | | | | | | | | | | | | | | | | | | | | | | | | | | | |
|-----------|-----------------|---------------------------------------|------------------------------------|------------------|-----------------------------|-----------------------------|-----------------------------------|----------------|----------------|--------------|------------------------|-----------------------|-----------------|--------------------------|---------------|-----------|----------------|------------|----------------|----------|-----------------------|------------|---------------|-------------------------------|-------------------------------|--------------------------|---------------------|------------|--------------|----------------------|---------------------|---|---|----------------------|--------------|--------------|------------|--|-------------|----------------|----------------------|----------------------|------------------|-----------------|------------------|-------------|--------------------|-------------|------------------|------------------|---------------|---------------|----------------|-----------------|---------------|------------|-------------------------------------|---------------|------------------|----------------|---------------------------------|----------------|-----------------|---------------|-----------|-----------------|----------------|---------------|----------------------|-------------|-----------------|-------------------|-------------------|---------------|------------|--------------------|-----------------|-------------------------|------------------------|---------------------|---------------------|---------------------|-----------------|--------------|-----------|-----------|----------------------|-----------|----------------|------------------|---|------------------------------------|-------------|--------------------------------|--------------|--|-----------------------------|-------------|-------------|---------------------------|------------|----------------------------------|----------|---------------|----------------|----------------|-------------------------|------------|------------------|--------------------------|--|--------------|--------------|-------------------|-----------------|-------------------|--------------|---------------------|---------------------|--------------|---------------|------------|-----------------------------|------------|----------|--|------------|--------------|----------------------------------|--------------|----------------|---------------|---------|-----------------------|--------------------------------------|-----------|--------------|-------------------|-------------------------------|----------------------------|--------------|-------------------------------|-------------------------------|-----------------------|----------------------|---------------|----------|------------|-------------------------|------------------|----------------|---------------------------|-----------------|-----------------------------|------------------------|---------------------|---------------------------------|-------------|---------------|------------------------------|----------------|------------|--------------|--------------------|------------------------|------------|----------------------|---------------|------------|-------------------|---------------|------------|----------------|-----------------|------------------|---|-----------------|-----------------------|--------------------|--------------------------|-------------------------------|---------------------|--------------------|--------------|-------------------|-----------------------------------|--|------------------------------|---------|-------------------------------|------------------------|-----------------|-----------------|---------|--------------|------------|-------------------|------------|-------------------|-------------------------------|----------------|--------------------------|
| A. AMPERE | AV. ANCHOR BOLT | AC. ALTERNATE CURRENT/AIR CONDITIONER | ACCA. ANTENNA CABLE COVER ASSEMBLY | ADDL. ADDITIONAL | A.F.F. ABOVE FINISHED FLOOR | A.F.G. ABOVE FINISHED GRADE | AIC. AMPERE INTERRUPTING CAPACITY | ALUM. ALUMINUM | ALT. ALTERNATE | ANT. ANTENNA | APPRX. APPROXIMATE(LY) | ARCH. ARCHITECT(U)RAL | AT. AMPERE TRIP | AWG. AMERICAN WIRE GAUGE | BATT. BATTERY | BD. BOARD | BLDG. BUILDING | BLK. BLOCK | BLKG. BLOCKING | BM. BEAM | B.N. BOUNDARY NAILING | BR. BRANCH | BRKR. BREAKER | BTGW. BARE TINNED COPPER WIRE | BTS. BASE TRANSMISSION SYSTEM | B.O.F. BOTTOM OF FOOTING | BU. BACK-UP CABINET | C. CONDUIT | CAB. CABINET | CANT. CANTILEVER(ED) | CB. CIRCUIT BREAKER | CDMA. CODE-DIVISION MULTIPLE ACCESS (2G & 3G) | CDUK. CONSOLIDATION DISTRIBUTION UNIT KIT | C.I.P. CAST IN PLACE | CKT. CIRCUIT | CLG. CEILING | CLR. CLEAR | CMU. CONCRETE MASONRY UNIT (JAMB BLOCKS) | COL. COLUMN | CONC. CONCRETE | CONN. CONNECTION(OR) | CONSTR. CONSTRUCTION | CONT. CONTINUOUS | CONT. CONTINUED | d. PENNY (NAILS) | DBL. DOUBLE | DC. DIRECT CURRENT | DEM. DEMAND | DEPT. DEPARTMENT | D.F. DOUGLAS FIR | DIA. DIAMETER | DIAG. DIAGRAM | DIM. DIMENSION | DWG. DRAWING(S) | DWL. DOWEL(S) | EACH. EACH | EGR. EMERGENCY GENERATOR RECEPTACLE | EL. ELEVATION | ELEC. ELECTRICAL | ELEV. ELEVATOR | EMT. ELECTRICAL METALLIC TUBING | E.N. EDGE NAIL | ENCL. ENCLOSURE | ENG. ENGINEER | EQ. EQUAL | EXIST. EXISTING | EXP. EXPANSION | EXT. EXTERIOR | FAB. FABRICATION(OR) | FAC. FACTOR | FIA. FIRE ALARM | F.F. FINISH FLOOR | F.G. FINISH GRADE | FIN. FINISHED | FLR. FLOOR | FLUOR. FLUORESCENT | FDN. FOUNDATION | F.O.C. FACE OF CONCRETE | F.O.M. FACE OF MASONRY | F.O.S. FACE OF STUD | F.O.W. FACE OF WALL | F.S. FINISH SURFACE | FT. FOOT (FEET) | FTG. FOOTING | F.U. FUSE | G. GROUND | GR. GROWTH (CABINET) | GA. GAUGE | GEN. GENERATOR | GI. GALVANIZE(D) | G.F.C.I. GROUND FAULT CIRCUIT INTERRUPTER | GLB. (GLU-LAM) GLUE LAMINATED BEAM | GND. GROUND | GPS. GLOBAL POSITIONING SYSTEM | GRND. GROUND | GSM. GLOBAL SYSTEM MOBILE (2G+ MOBILE TECH.) | HDR. HARD DRAWN COPPER WIRE | HDR. HEADER | HGR. HANGER | HPS. HIGH PRESSURE SODIUM | HT. HEIGHT | ICGB. ISOLATED COPPER GROUND BUS | IN. INCH | INT. INTERIOR | INT. INTRINSIC | L.B. LAG BOLTS | L.F. LINEAR FEET (FOOT) | LG. LENGTH | L. LONG(TUDINAL) | LPS. LOW PRESSURE SODIUM | LTE. LONG TERM EVOLUTION (4G MOBILE TECH.) | MAS. MASONRY | MAX. MAXIMUM | M.B. MACHINE BOLT | MCH. MECHANICAL | MFR. MANUFACTURER | MIN. MINIMUM | MISC. MISCELLANEOUS | MLO. MAIN LUGS ONLY | MTD. MOUNTED | MTG. MOUNTING | MTL. METAL | MTS. MANUAL TRANSFER SWITCH | N. NEUTRAL | (N). NEW | NEMA. NATIONAL ELECTRICAL MANUFACTURERS ASSOC. | NO. NUMBER | NOT TO SCALE | OBIF. OPTICAL BASEBAND INTERFACE | OH. OVERHEAD | O.C. ON CENTER | OPNG. OPENING | P. POLE | PCC. PRECAST CONCRETE | PCS. PERSONAL COMMUNICATION SERVICES | PH. PHASE | PLY. PLYWOOD | PNLBD. PANELBOARD | PPC. POWER PROTECTION CABINET | PRC. PRIMARY RADIO CABINET | PRI. PRIMARY | P.S.F. POUNDS PER SQUARE FOOT | P.S.I. POUNDS PER SQUARE INCH | P.T. PRESSURE TREATED | PWR. POWER (CABINET) | QTY. QUANTITY | R. RADIO | RAD. RADIO | RBS. RADIO BASE STATION | RCPT. RECEPTACLE | REF. REFERENCE | REINF. REINFORCEMENT(ING) | REQ'D. REQUIRED | RGS. RIGID GALVANIZED STEEL | RRU. REMOTE RADIO UNIT | RF. RADIO FREQUENCY | RF. RECEIVER AIR INTERFACE TRAY | SAF. SAFETY | SCH. SCHEDULE | SDBC. SOFT DRAWN BARE COPPER | SEC. SECONDARY | SHT. SHEET | SIM. SIMILAR | S.N. SOLID NEUTRAL | SPEC. SPECIFICATION(S) | SQ. SQUARE | S.S. STAINLESS STEEL | STD. STANDARD | STL. STEEL | STRUC. STRUCTURAL | SURF. SURFACE | SW. SWITCH | TEL. TELEPHONE | TEMP. TEMPORARY | THK. THICK(NESS) | TMAS. TOWER MOUNTED AMPLIFIER (DC SUPPLY VOLTAGE) | T.N. TOWER NAIL | T.O.A. TOP OF ANTENNA | T.O.C. TOP OF CURB | T.O.F. TOP OF FOUNDATION | T.O.P. TOP OF PLATE (PARAPET) | T.O.S. TOP OF STEEL | T.O.W. TOP OF WALL | TYP. TYPICAL | U.G. UNDER GROUND | U.L. UNDERWRITERS LABORATORY INC. | UMTS. UNIVERSAL MOBIL TECH. SYS. (3G MOBILE TECH.) | UN.O. UNLESS NOTED OTHERWISE | V. VOLT | VAC. VOLT ALTERNATING CURRENT | V.I.F. VERIFY IN FIELD | W. WATT OR WIRE | WD. WIDE(WIDTH) | W. WITH | W/O. WITHOUT | WOOD. WOOD | W.P. WEATHERPROOF | WT. WEIGHT | XFMR. TRANSFORMER | XLPE. CROSS-LINK POLYETHYLENE | CL. CENTERLINE | PL. PLATE, PROPERTY LINE |
|-----------|-----------------|---------------------------------------|------------------------------------|------------------|-----------------------------|-----------------------------|-----------------------------------|----------------|----------------|--------------|------------------------|-----------------------|-----------------|--------------------------|---------------|-----------|----------------|------------|----------------|----------|-----------------------|------------|---------------|-------------------------------|-------------------------------|--------------------------|---------------------|------------|--------------|----------------------|---------------------|---|---|----------------------|--------------|--------------|------------|--|-------------|----------------|----------------------|----------------------|------------------|-----------------|------------------|-------------|--------------------|-------------|------------------|------------------|---------------|---------------|----------------|-----------------|---------------|------------|-------------------------------------|---------------|------------------|----------------|---------------------------------|----------------|-----------------|---------------|-----------|-----------------|----------------|---------------|----------------------|-------------|-----------------|-------------------|-------------------|---------------|------------|--------------------|-----------------|-------------------------|------------------------|---------------------|---------------------|---------------------|-----------------|--------------|-----------|-----------|----------------------|-----------|----------------|------------------|---|------------------------------------|-------------|--------------------------------|--------------|--|-----------------------------|-------------|-------------|---------------------------|------------|----------------------------------|----------|---------------|----------------|----------------|-------------------------|------------|------------------|--------------------------|--|--------------|--------------|-------------------|-----------------|-------------------|--------------|---------------------|---------------------|--------------|---------------|------------|-----------------------------|------------|----------|--|------------|--------------|----------------------------------|--------------|----------------|---------------|---------|-----------------------|--------------------------------------|-----------|--------------|-------------------|-------------------------------|----------------------------|--------------|-------------------------------|-------------------------------|-----------------------|----------------------|---------------|----------|------------|-------------------------|------------------|----------------|---------------------------|-----------------|-----------------------------|------------------------|---------------------|---------------------------------|-------------|---------------|------------------------------|----------------|------------|--------------|--------------------|------------------------|------------|----------------------|---------------|------------|-------------------|---------------|------------|----------------|-----------------|------------------|---|-----------------|-----------------------|--------------------|--------------------------|-------------------------------|---------------------|--------------------|--------------|-------------------|-----------------------------------|--|------------------------------|---------|-------------------------------|------------------------|-----------------|-----------------|---------|--------------|------------|-------------------|------------|-------------------|-------------------------------|----------------|--------------------------|

NOTES FOR EXISTING AT&T CELL SITES:

- PRIOR TO THE SUBMISSION OF BIDS, THE BIDDING SUBCONTRACTOR SHALL VISIT THE CELL SITE TO FAMILIARIZE WITH THE EXISTING CONDITIONS AND TO CONFIRM THAT THE WORK CAN BE ACCOMPLISHED AS SHOWN ON THE CONSTRUCTION DRAWINGS. ANY DISCREPANCY FOUND SHALL BE BROUGHT TO THE ATTENTION OF CONTRACTOR.
- SUBCONTRACTOR SHALL VERIFY ALL EXISTING DIMENSIONS AND CONDITIONS PRIOR TO COMMENCING ANY WORK. ALL DIMENSIONS OF EXISTING CONSTRUCTION SHOWN ON THE DRAWINGS MUST BE VERIFIED. SUBCONTRACTOR SHALL NOTIFY THE CONTRACTOR OF ANY DISCREPANCIES PRIOR TO ORDERING MATERIAL OR PROCEEDING WITH CONSTRUCTION.
- THE EXISTING CELL SITE IS IN FULL COMMERCIAL OPERATION. ANY CONSTRUCTION WORK BY SUBCONTRACTOR SHALL NOT DISRUPT THE EXISTING NORMAL OPERATION. ANY WORK ON EXISTING EQUIPMENT MUST BE COORDINATED WITH CONTRACTOR. ALSO, WORK SHOULD BE SCHEDULED FOR AN APPROPRIATE MAINTENANCE WINDOW USUALLY IN LOW TRAFFIC PERIODS AFTER MIDNIGHT.
- SINCE THE CELL SITE IS ACTIVE, ALL SAFETY PRECAUTIONS MUST BE TAKEN WHEN WORKING AROUND HIGH LEVELS OF ELECTROMAGNETIC RADIATION. EQUIPMENT SHOULD BE SHUTDOWN PRIOR TO PERFORMING ANY WORK THAT COULD EXPOSE THE WORKERS TO DANGER. PERSONAL RF EXPOSURE MONITORS ARE ADVISED TO BE WORN TO ALERT OF ANY DANGEROUS EXPOSURE LEVELS.
- SUBCONTRACTOR SHALL DETERMINE ACTUAL ROUTING OF CONDUIT, POWER AND T1 CABLES, GROUNDING CABLES AS SHOWN ON THE POWER, GROUNDING AND TELCO PLAN DRAWING. SUBCONTRACTOR SHALL UTILIZE EXISTING TRAYS AND/OR SHALL ADD NEW TRAYS AS NECESSARY. SUBCONTRACTOR SHALL CONFIRM THE ACTUAL ROUTING WITH THE CONTRACTOR.
- SUBCONTRACTOR SHALL LEGALLY AND PROPERLY DISPOSE OF ALL SCRAP MATERIALS SUCH AS COAXIAL CABLES AND OTHER ITEMS REMOVED FROM THE EXISTING FACILITY. ANTENNAS REMOVED SHALL BE RETURNED TO THE OWNER'S DESIGNATED LOCATION.

- THE FACILITY IS AN UNOCCUPIED DIGITAL TELECOMMUNICATION FACILITY.
- PLANS ARE NOT TO BE SCALED AND ARE INTENDED TO BE A DIAGRAMMATIC OUTLINE ONLY, UNLESS NOTED OTHERWISE. THE WORK SHALL INCLUDE FURNISHING MATERIALS, EQUIPMENT, APPURTENANCES AND LABOR NECESSARY TO COMPLETE ALL INSTALLATIONS AS INDICATED ON THE DRAWINGS.
- PRIOR TO THE SUBMISSION OF BIDS, THE CONTRACTORS SHALL VISIT THE JOB SITE AND BE RESPONSIBLE FOR ALL CONTRA DOCUMENTS, FIELD CONDITIONS AND DIMENSIONS, AND CONFIRMING THAT THE WORK CAN BE ACCOMPLISHED AS SHOWN PRIOR TO PROCEEDING WITH CONSTRUCTION. ANY DISCREPANCIES ARE TO BE BROUGHT TO THE ATTENTION OF THE IMPLEMENTATION ENGINEER AND ENGINEER PRIOR TO PROCEEDING WITH THE WORK.
- THE CONTRACTOR SHALL OBTAIN, IN WRITING, AUTHORIZATION TO PROCEED BEFORE STARTING WORK ON ANY ITEM NOT CLEARLY DEFINED OR IDENTIFIED BY THE CONTRACT DOCUMENTS.
- THE CONTRACTOR SHALL INSURE ALL EQUIPMENT AND MATERIALS IN ACCORDANCE WITH MANUFACTURER'S RECOMMENDATIONS UNLESS SPECIFICALLY INDICATED OTHERWISE OR WHERE LOCAL CODES OR REGULATIONS TAKE PRECEDENCE.
- ALL WORK PERFORMED AND MATERIALS INSTALLED SHALL BE IN STRICT ACCORDANCE WITH ALL APPLICABLE CODES, REGULATIONS AND ORDINANCES. CONTRACTOR SHALL GIVE ALL NOTICES AND COMPLY WITH ALL LAWS, ORDINANCES, RULES, REGULATIONS AND LAWFUL ORDERS OF ANY PUBLIC AUTHORITY REGARDING THE PERFORMANCE OF THE WORK. MECHANICAL AND ELECTRICAL SYSTEMS SHALL BE INSTALLED IN ACCORDANCE WITH ALL APPLICABLE MUNICIPAL AND UTILITY COMPANY SPECIFICATIONS, AND LOCAL AND STATE JURISDICTIONAL CODES, ORDINANCES AND APPLICABLE REGULATIONS.
- THE GENERAL CONTRACTOR SHALL SUPERVISE AND DIRECT THE WORK, USING THE BEST SKILLS AND ATTENTION. THE CONTRACTOR SHALL BE SOLELY RESPONSIBLE FOR ALL CONSTRUCTION MEANS, METHODS, TECHNIQUES, SEQUENCES AND PROCEDURES AND FOR COORDINATING ALL PORTIONS OF THE WORK UNDER THE CONTRACT INCLUDING CONTACT AND COORDINATION WITH THE IMPLEMENTATION ENGINEER AND WITH THE LANDLORD'S AUTHORIZED REPRESENTATIVE.
- SEAL PENETRATIONS THROUGH FIRE RATED AREAS WITH U.L. LISTED AND FIRE CODE APPROVED MATERIALS.
- PROVIDE A PORTABLE FIRE EXTINGUISHER WITH A RATING OF NOT LESS THAN 2-A OR 2-A10BC WITHIN 75 FEET TRAVEL DISTANCE TO ALL PORTIONS OF THE PROJECT AREA DURING CONSTRUCTION.
- DETAILS ARE INTENDED TO SHOW END RESULT OF DESIGN. MINOR MODIFICATIONS MAY BE REQUIRED TO SUIT JOB DIMENSIONS OR CONDITIONS, AND SUCH MODIFICATIONS SHALL BE INCLUDED AS PART OF THE WORK.
- REPRESENTATIONS OF TRUE NORTH, OTHER THAN THOSE FOUND ON THE PLOT OF SURVEY DRAWING (SHEET LS1 OR SHEET C-1), SHALL NOT BE USED TO IDENTIFY OR ESTABLISH THE BEARING OF TRUE NORTH AT THE SITE. THE CONTRACTOR SHALL RELY SOLELY ON THE PLOT OF SURVEY DRAWING AND ANY SURVEYOR'S MARKINGS AT THE SITE FOR THE ESTABLISHMENT OF TRUE NORTH, AND SHALL NOTIFY THE ENGINEER PRIOR TO PROCEEDING WITH THE WORK IF ANY DISCREPANCY IS FOUND BETWEEN THE VARIOUS ELEMENTS OF THE WORKING DRAWINGS AND THE TRUE NORTH ORIENTATION AS DEPICTED ON THE CIVIL SURVEY. THE CONTRACTOR SHALL ASSUME SOLE LIABILITY FOR ANY FAILURE TO NOTIFY THE ENGINEER.
- THE CONTRACTOR SHALL MAKE NECESSARY PROVISIONS TO PROTECT EXISTING IMPROVEMENTS, PAVING, CURBS, VEGETATION, GALVANIZED SURFACES, ETC., AND UPON COMPLETION OF WORK REPAIR ANY DAMAGE THAT OCCURRED DURING CONSTRUCTION TO THE SATISFACTION OF AT&T.
- KEEP GENERAL AREA CLEAN, HAZARD FREE, AND DISPOSE OF ALL DIRT, DEBRIS, RUBBISH AND REMOVE EQUIPMENT NOT SPECIFIED AS REMAINING ON THE PROPERTY. LEAVE PREMISES IN CLEAN CONDITION AND FREE FROM PAINT SPOTS, DUST OR SMUDGES OF ANY NATURE.
- PENETRATIONS OF ROOF MEMBRANES SHALL BE PATCHED/FLASHED AND MADE WATERTIGHT USING LIKE MATERIALS IN ACCORDANCE WITH NRCA ROOFING STANDARDS AND DETAILS. CONTRACTOR SHALL OBTAIN DETAILING CLARIFICATION FOR SITE-SPECIFIC CONDITIONS FROM ENGINEER, IF NECESSARY, BEFORE PROCEEDING.
- BEFORE ORDERING AND/OR BEFORE FABRICATING/CONSTRUCTING/INSTALLING ANY ITEMS, VERIFY THE TYPES AND QUANTITIES.
- CONTRACTOR SHALL PROVIDE SITE FOREMAN WITH A CELLULAR PHONE AND PAGER, AND KEEP SAME ON SITE WHENEVER PERSONNEL ARE ON SITE.
- THE CONTRACTOR SHALL VERIFY ALL DIMENSIONS AND CONDITIONS ON THE SITE AND NOTIFY THE PROJECT MANAGER OF ANY DISCREPANCIES BEFORE STARTING ANY WORK.
- CONTRACTOR TO PROVIDE COMPLETE SET OF AS BUILT DRAWINGS WITHIN 10 WORKING DAYS OF PROJECT COMPLETION.
- CONTRACTOR IS TO EXCAVATE 6" BELOW EXISTING GRADE AND SPRAY WITH WEED CONTROL. REPLACE WITH CLASS II AGGREGATE BASE AND CRUSHED WASHED ROCK, AS SPECIFIED ON SITE PLAN.
- CONTRACTOR SHALL PROVIDE TOILET FACILITY DURING ALL PHASES OF CONSTRUCTION.
- PRIOR TO THE COMMENCEMENT OF CONSTRUCTION OR THE FABRICATION OF MATERIALS TO BE INSTALLED AT THE SITE, THE CONTRACTOR SHALL FIELD VERIFY ALL DIMENSIONS INCLUDING AS-BUILT DIMENSIONS OF EXISTING STRUCTURES OR STRUCTURAL ELEMENTS HAVING A BEARING ON THE SCOPE OF THE WORK TO BE PERFORMED. IF ANY DISCREPANCY IS FOUND BETWEEN THE VARIOUS ELEMENTS OF THE WORKING DRAWINGS AND THE DIMENSIONS OR CONDITIONS FOUND TO BE EXISTING IN THE FIELD, THE CONTRACTOR SHALL NOTIFY THE ENGINEER AND OBTAIN DESIGN RESOLUTION PRIOR TO PROCEEDING WITH THE PORTION(S) OF THE WORK AFFECTED. THE CONTRACTOR SHALL ASSUME SOLE LIABILITY FOR ANY FAILURE TO SO NOTIFY THE ENGINEER AND OBTAIN RESOLUTION BEFORE PROCEEDING.



ERICSSON
330 COMMERCE, STE. 200
IRVINE, CA 92602

M SQUARED
WIRELESS
1387 CALLE AVANZADO
IRVINE, CALIFORNIA CA 92614 (949) 261-0251

| | | |
|-------------|------------|-------------------|
| DRAWN BY: | TL | |
| CHECKED BY: | MM | |
| REV | DATE | DESCRIPTION |
| C | 09/24/2018 | 100% CONSTRUCTION |
| B | 05/31/18 | 100% CONSTRUCTION |
| A | 03/09/18 | 90% CONSTRUCTION |

SIGNED DATE: 05/31/2018

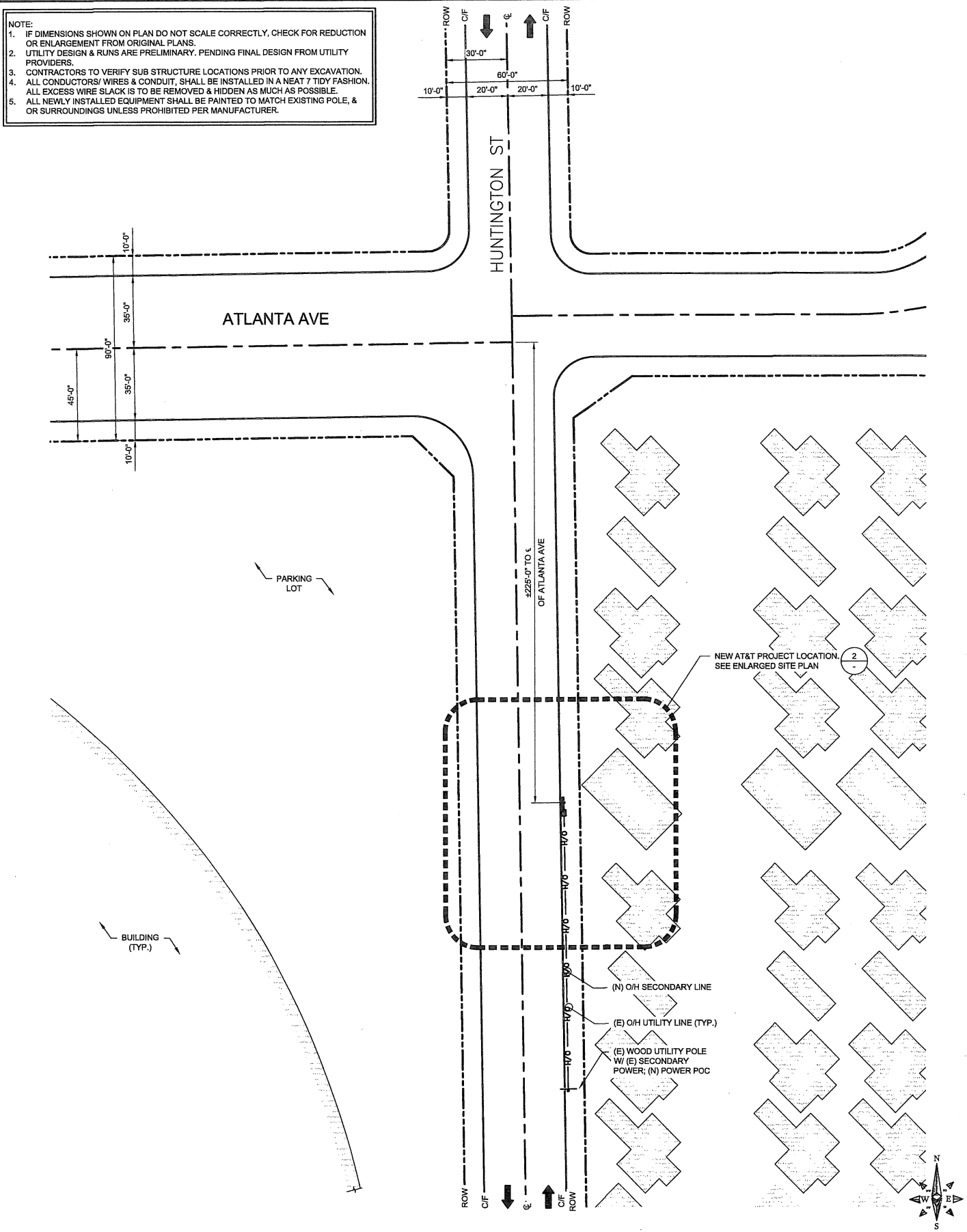
IT IS A VIOLATION OF LAW FOR ANY PERSON, UNLESS THEY ARE ACTING UNDER THE DIRECTION OF A LICENSED PROFESSIONAL ENGINEER, TO ALTER THIS DOCUMENT.

SITE ID: HTBC1 05A
90 HUNTINGTON ST
HUNTINGTON BEACH, CA, 92648

SHEET TITLE
GENERAL NOTES

SHEET NUMBER
GN-1

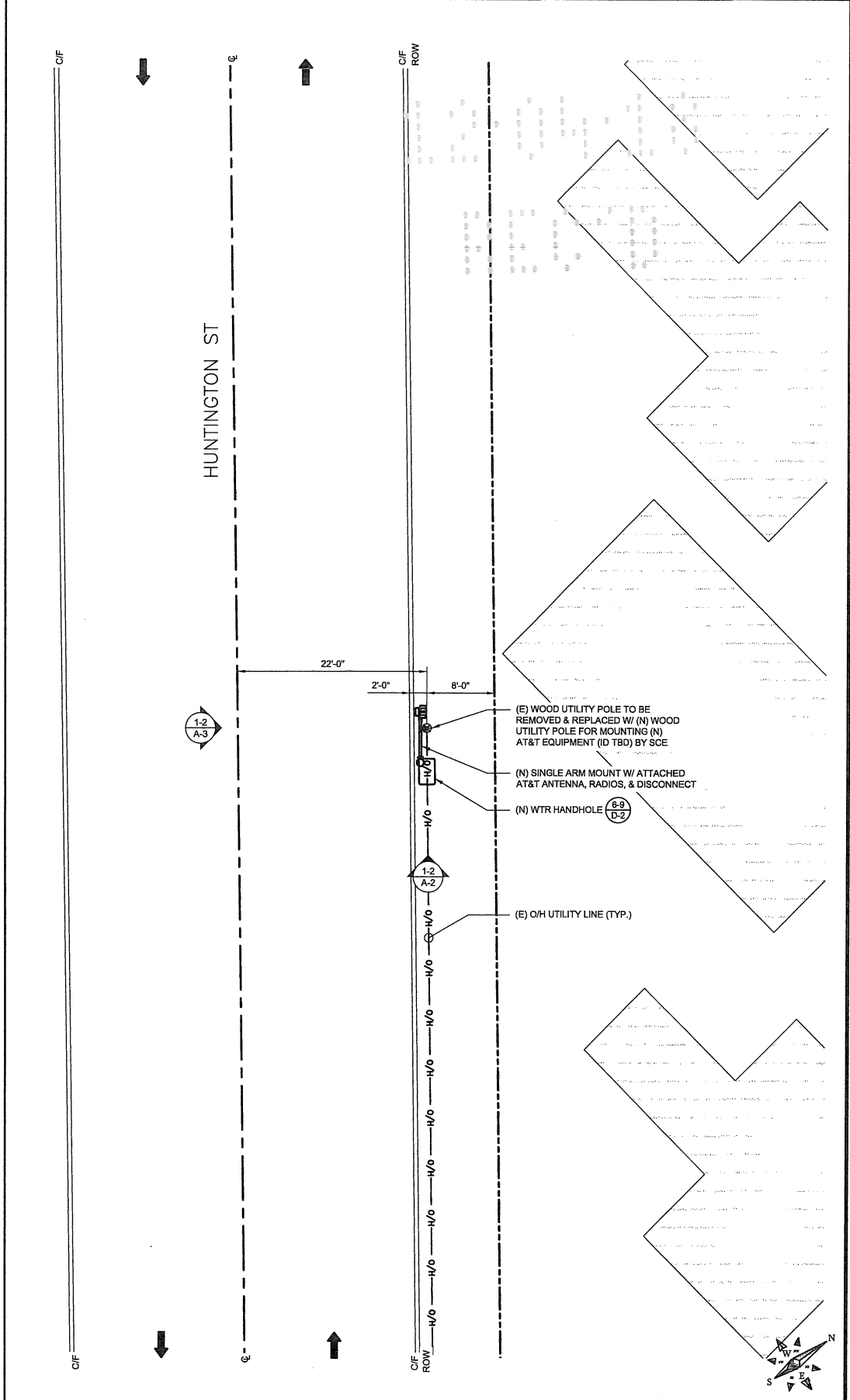
NOTE:
 1. IF DIMENSIONS SHOWN ON PLAN DO NOT SCALE CORRECTLY, CHECK FOR REDUCTION OR ENLARGEMENT FROM ORIGINAL PLANS.
 2. UTILITY DESIGN & RUNS ARE PRELIMINARY. PENDING FINAL DESIGN FROM UTILITY PROVIDERS.
 3. CONTRACTORS TO VERIFY SUB STRUCTURE LOCATIONS PRIOR TO ANY EXCAVATION.
 4. ALL CONDUCTORS/ WIRES & CONDUIT, SHALL BE INSTALLED IN A NEAT & TIDY FASHION. ALL EXCESS WIRE SLACK IS TO BE REMOVED & HIDDEN AS MUCH AS POSSIBLE.
 5. ALL NEWLY INSTALLED EQUIPMENT SHALL BE PAINTED TO MATCH EXISTING POLE, & OR SURROUNDINGS UNLESS PROHIBITED PER MANUFACTURER.



SITE PLAN

24"x36" SCALE: 1" = 20'-0"
 11"x17" SCALE: 1" = 40'-0"

3



ENLARGED SITE PLAN

24"x36" SCALE: 1/8" = 1'-0"
 11"x17" SCALE: 1/16" = 1'-0"

2

330 COMMERCE, STE. 200
 IRVINE, CA 92602

1387 CALLE AVANZADO
 SAN CLEMENTE CA 92670 (949) 301-0031

DRAWN BY: TL
 CHECKED BY: MM

| REV | DATE | DESCRIPTION |
|-----|------------|-------------------|
| C | 09/24/2018 | 100% CONSTRUCTION |
| B | 05/31/18 | 100% CONSTRUCTION |
| A | 03/09/18 | 90% CONSTRUCTION |

SIGNED DATE : 05/31/2018
IT IS A VIOLATION OF LAW FOR ANY PERSON, UNLESS THEY ARE ACTING UNDER THE DIRECTION OF A LICENSED PROFESSIONAL ENGINEER, TO ALTER THIS DOCUMENT.

SITE ID: HTBC1 05A
 90 HUNTINGTON ST
 HUNTINGTON BEACH, CA, 92648

SHEET TITLE
SITE PLAN

SHEET NUMBER
A-1

- ⊕ T/ OF (E) UTILITY POLE
24'-8" A.G.L.
- ⊕ (E) COMM LINE
23'-6" A.G.L.
- ⊕ (E) TELCO LINE
21'-4" A.G.L.
- ⊕ (E) FIBER LINE
19'-10" A.G.L.

- ⊕ (E) GROUND LEVEL
0'-0" A.G.L.
- ⊕ (E) POLE EMBEDMENT
4'-6" A.G.L.

- (E) WOOD UTILITY POLE TO BE REMOVED & REPLACED W/ (N) WOOD UTILITY POLE
- (E) COMM LINE TO BE RELOCATED TO (N) WOOD UTILITY POLE
- (E) TELCO LINE TO BE RELOCATED TO (N) WOOD UTILITY POLE
- (E) FIBER LINE TO BE RELOCATED TO (N) WOOD UTILITY POLE

(E) FENCE

(E) POLE EMBEDMENT

NOTE:
ALL NEW EQUIPMENT SHALL BE
PAINTED TO MATCH UTILITY POLE

- ⊕ T/ OF (N) UTILITY POLE
36'-0" A.G.L.

- ⊕ T/ OF (N) AT&T ANTENNA
27'-0" A.G.L.
- ⊕ (N) AT&T ANTENNA RAD CENTER
26'-0" A.G.L.

- ⊕ B/ OF (N) EXTENSION BRACKET
24'-0" A.G.L.

- ⊕ (E) COMM LINE
21'-0" A.G.L.
- ⊕ (E) TELCO LINE
20'-0" A.G.L.
- ⊕ (E) FIBER LINE
19'-0" A.G.L.

- ⊕ (E) GROUND LEVEL
0'-0" A.G.L.

- ⊕ (N) POLE EMBEDMENT
8'-0" B.G.L.

WIND

- (1) SECONDARY LINE
- (N) WETHER HEAD
- (N) WOOD UTILITY POLE
POLE # C5355Y
- (N) SINGLE EXTENSION ARM MOUNT W/ (1)
(N) AT&T ANTENNA (2) (N) AT&T 2203
RADIOS, (1) RAYCAP DISCONNECT SWITCH
(1) (N) 2205 RADIO & (1) FUTURE 2205 RADIO

- (E) RELOCATED COMM LINE
- (E) RELOCATED TELCO LINE
- (E) RELOCATED FIBER LINE
- (N) SCE 1" PVC CONDUIT
SCH-80 FOR POWER
- (N) AT&T 1" PVC CONDUIT
SCH-80 FOR POWER

- (N) #6 BARE FOR GROUND W/
HALF ROUND WOOD MOLDING

- (N) WTR HANDHOLE
(BEYOND)

- NEW 5/8"Ø x 8'-0" COPPER-CLAD
STEEL GROUND ROD (TYP.)

- (N) POLE EMBEDMENT



ERICSSON
330 COMMERCE, STE. 200
IRVINE, CA 92602

M SQUARED WIRELESS
1387 CALLE AVANZADO
SAN CLEMENTE CA 92673 (408) 981-0281

DRAWN BY: TL
CHECKED BY: MM

| REV | DATE | DESCRIPTION |
|-----|------------|-------------------|
| C | 09/24/2018 | 100% CONSTRUCTION |
| B | 05/31/18 | 100% CONSTRUCTION |
| A | 03/09/18 | 90% CONSTRUCTION |

SIGNED DATE : 05/31/2018

IT IS A VIOLATION OF LAW FOR ANY PERSON, UNLESS THEY ARE ACTING UNDER THE DIRECTION OF A LICENSED PROFESSIONAL ENGINEER, TO ALTER THIS DOCUMENT.

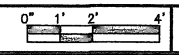
SITE ID: HTBC1 05A
90 HUNTINGTON ST
HUNTINGTON BEACH, CA, 92648

SHEET TITLE
ELEVATIONS

SHEET NUMBER
A-2

EXISTING SOUTHEAST ELEVATION

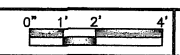
24"x36" SCALE: 3/8" = 1'-0"
11"x17" SCALE: 3/16" = 1'-0"



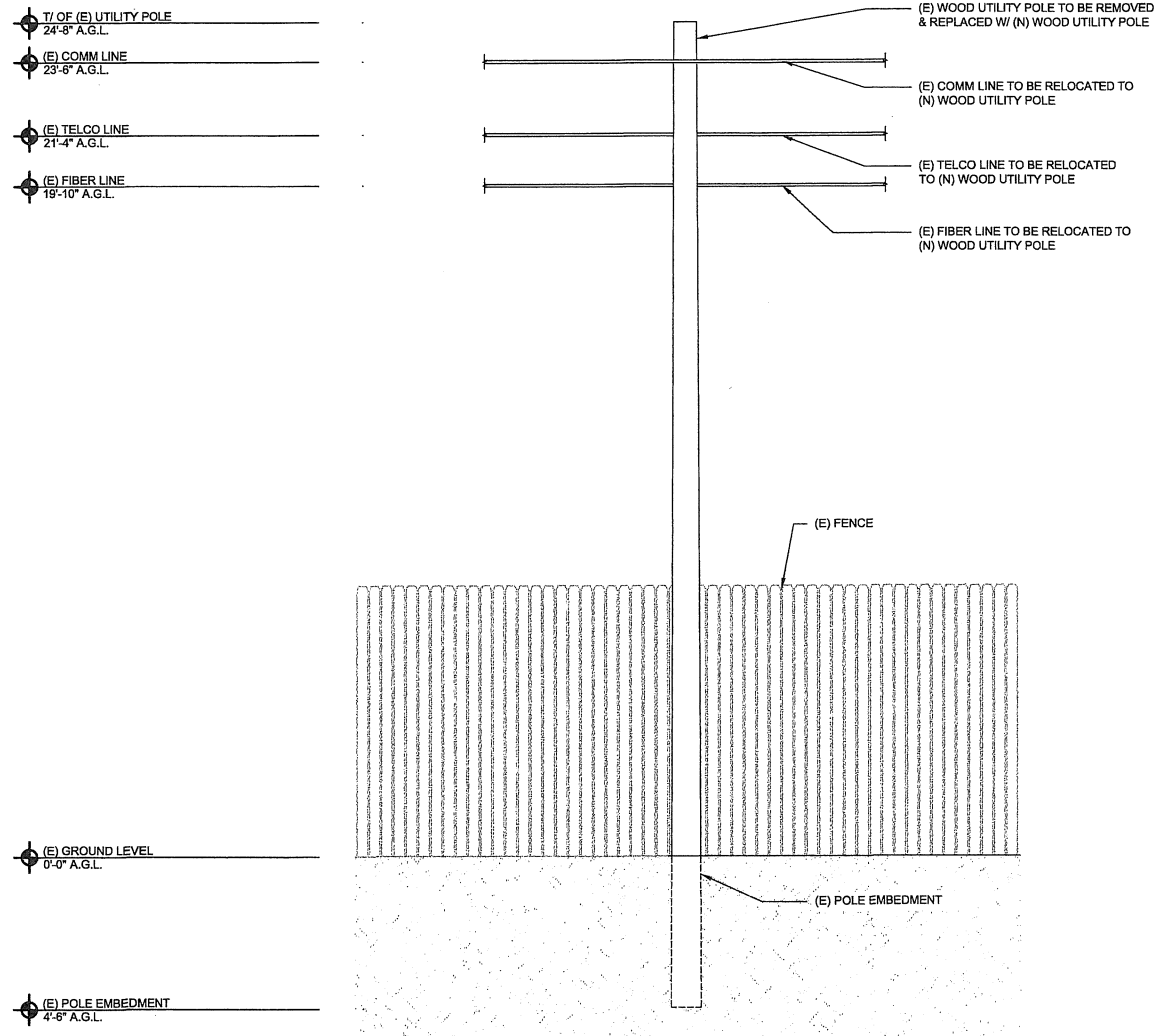
2

NEW SOUTHEAST ELEVATION

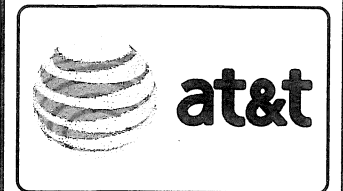
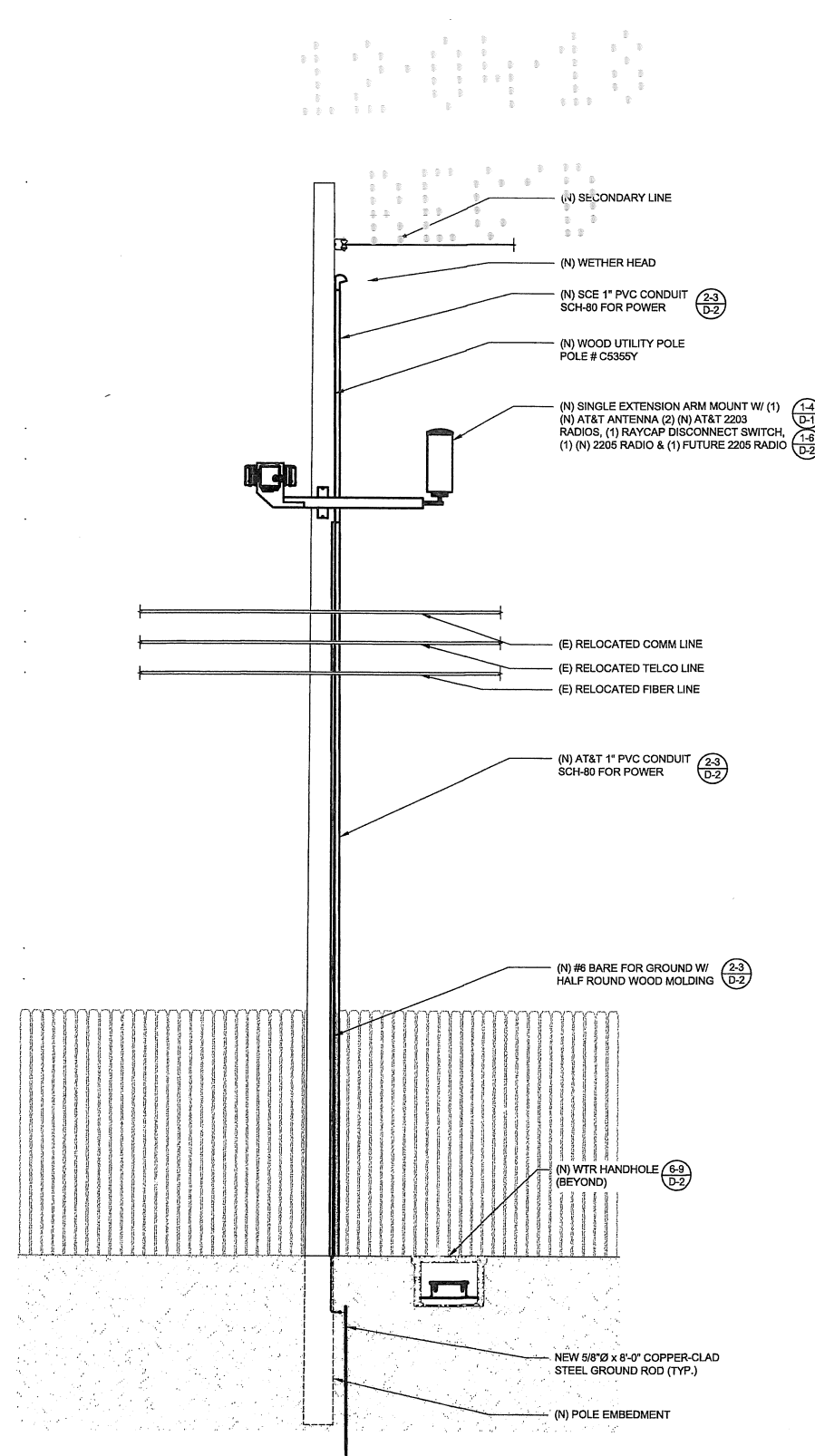
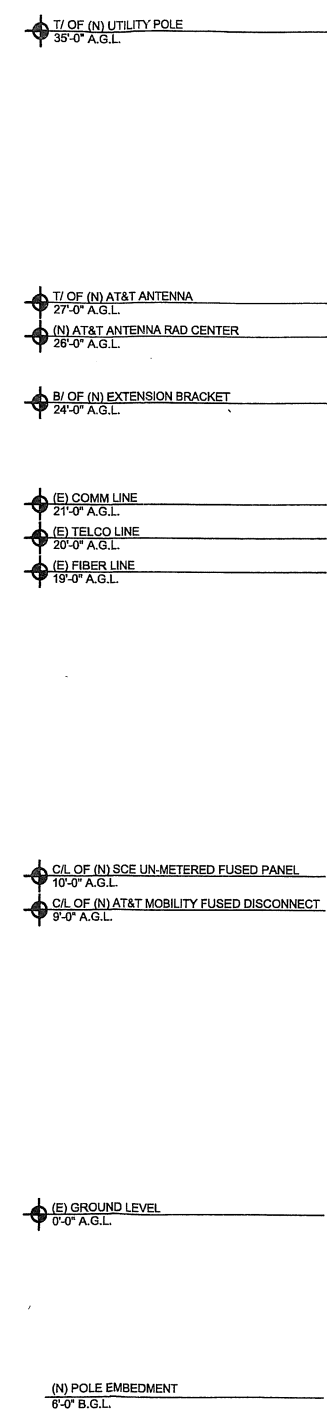
24"x36" SCALE: 3/8" = 1'-0"
11"x17" SCALE: 3/16" = 1'-0"



1



NOTE: ALL NEW EQUIPMENT SHALL BE PAINTED TO MATCH UTILITY POLE



DRAWN BY: TL
 CHECKED BY: MM

| REV | DATE | DESCRIPTION |
|-----|------------|-------------------|
| C | 09/24/2018 | 100% CONSTRUCTION |
| B | 05/31/18 | 100% CONSTRUCTION |
| A | 03/09/18 | 90% CONSTRUCTION |

SIGNED DATE : 05/31/2018

IT IS A VIOLATION OF LAW FOR ANY PERSON, UNLESS THEY ARE ACTING UNDER THE DIRECTION OF A LICENSED PROFESSIONAL ENGINEER, TO ALTER THIS DOCUMENT.

SITE ID: HTBC1 05A
 90 HUNTINGTON ST
 HUNTINGTON BEACH, CA, 92648

SHEET TITLE
ELEVATIONS

SHEET NUMBER
A-3

EXISTING SOUTHWEST ELEVATION

24"x36" SCALE: 3/8" = 1'-0"
 11"x17" SCALE: 3/16" = 1'-0"
 0" 1' 2' 4'

2 NEW SOUTHWEST ELEVATION

24"x36" SCALE: 3/8" = 1'-0"
 11"x17" SCALE: 3/16" = 1'-0"
 0" 1' 2' 4'

1



(E) WOOD UTILITY POLE TO BE
REMOVED & REPLACED W/ (N)
35'-0" WOOD UTILITY POLE, FOR
MOUNTING (N) AT&T EQUIPMENT

10000
10000



at&t



ERICSSON

330 COMMERCE, STE. 200
IRVINE, CA 92602



1367 CALLE AVANZADO
SAN CLEMENTE CA 92679 (949) 261-6223

DRAWN BY: TL

CHECKED BY: MM

| REV | DATE | DESCRIPTION |
|-----|------------|-------------------|
| C | 09/24/2018 | 100% CONSTRUCTION |
| B | 05/31/18 | 100% CONSTRUCTION |
| A | 03/09/18 | 90% CONSTRUCTION |

SIGNED DATE : 09/31/2018

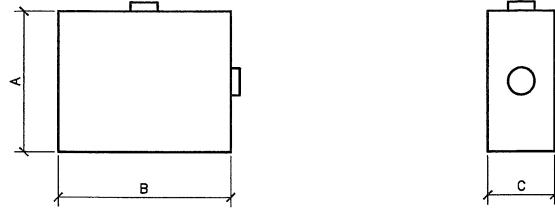
IT IS A VIOLATION OF LAW FOR ANY PERSON, UNLESS THEY
ARE ACTING UNDER THE DIRECTION OF A LICENSED
PROFESSIONAL ENGINEER, TO ALTER THIS DOCUMENT.

SITE ID: HTBC1 05A
90 HUNTINGTON ST
HUNTINGTON BEACH, CA, 92648

SHEET TITLE
SITE IMAGE

SHEET NUMBER
A-4

| SQUARE-D | |
|-------------------------------|-------|
| HINGED 3R ENCLOSURE # D221NRB | |
| DIMENSIONS: | |
| A | 7.75" |
| B | 9.63" |
| C | 3.75" |

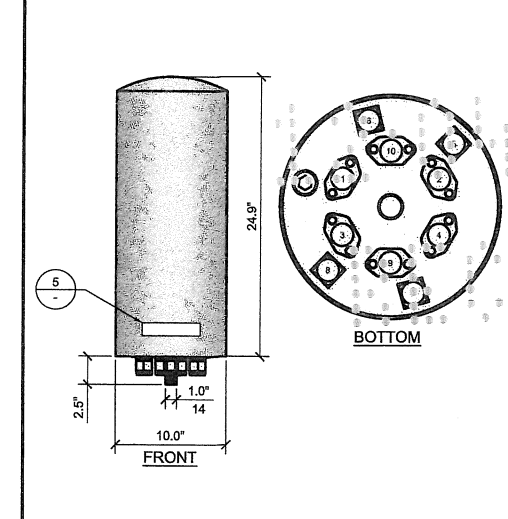
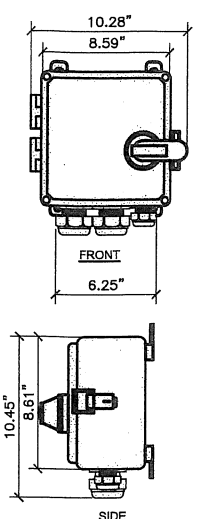
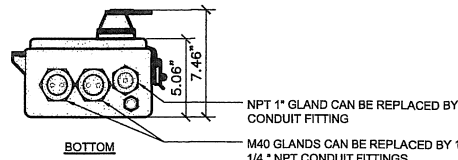


RAYCAP - RSCAC-633P-120-D

MECHANICAL
 CONNECTION TERMINAL (POWER): COMPRESSION LUG #6 - #14 AWG (13 - 2MM²)
 TERMINAL BLOCK #10-#26 AWG (6 - 0.14MM²)
 ENVIRONMENTAL INGRESS PROTECTION (IP) RATING: NEMA 4X
 OPERATION TEMPERATURE: (-40° C TO +80° C)
 STORAGE TEMPERATURE: (-70° C TO +80° C)
 ENCLOSURE TYPE (OUTDOOR): POLYCARBONATE: UL 94V-0 RATED
 ENCLOSURE DIMENSION: (L x W x H) 8.58" X 5.06" X 10.08"
 WEIGHT: 2.25 LBS [1.02KG]

ELECTRICAL
 SURGE PROTECTION DEVICE (SPD) TYPE TO UL: STRIKESORB 30-A
 NUMBER OF CIRCUITS PROTECTED: 4
 SURGE PROTECTIVE DEVICE (SPD) TYPE PER UL 1449 4TH EDITION: TYPE 2 COMPONENT ASSEMBLY
 SURGE PROTECTION DEVICE (SPD) CLASS TO IEC 61643-11: CLASS II
 NOMINAL OPERATING VOLTAGE (UNV): 120 V
 NOMINAL DISCHARGE CURRENT (IN) PER UL 1449 4TH EDITION: 20 KA 8/20 MS
 MAXIMUM DISCHARGE CURRENT [IMAX] PER IEC 61643-11 80 KA 8/20 MS
 MAXIMUM CONTINUOUS OPERATING VOLTAGE (UC) (MCOV) 150V
 VOLTAGE PROTECTION LEVEL (VPL) PER IEC 61643-11: 700V
 VOLTAGE PROTECTION RATING (VPR): 20 KA 8/20
 SUPPRESSION TECHNOLOGY: MOV
 PROTECTION MODES (DUAL MODE): LINE TO NEUTRAL, NEUTRAL TO GROUND

ENCLOSURE MODELS ARE COMPLIANT TO THE FOLLOWING SURGE PROTECTIVE DEVICE (SPD) STANDARDS:
 UL 1449 4TH EDITION 2011, IEC 61643-11: 2011, IEC 61643-12: 2011, IEC 62305-1: 2011, IEC 62305-2: 2011, IEC 62305-3: 2011, IEC 62305-4: 2011, IEC 62305-5: 2011, IEC 62305-6: 2011, IEC 62305-7: 2011, IEC 62305-8: 2011, IEC 62305-9: 2011, IEC 62305-10: 2011, IEC 62305-11: 2011, IEC 62305-12: 2011, IEC 62305-13: 2011, IEC 62305-14: 2011, IEC 62305-15: 2011, IEC 62305-16: 2011, IEC 62305-17: 2011, IEC 62305-18: 2011, IEC 62305-19: 2011, IEC 62305-20: 2011, IEC 62305-21: 2011, IEC 62305-22: 2011, IEC 62305-23: 2011, IEC 62305-24: 2011, IEC 62305-25: 2011, IEC 62305-26: 2011, IEC 62305-27: 2011, IEC 62305-28: 2011, IEC 62305-29: 2011, IEC 62305-30: 2011, IEC 62305-31: 2011, IEC 62305-32: 2011, IEC 62305-33: 2011, IEC 62305-34: 2011, IEC 62305-35: 2011, IEC 62305-36: 2011, IEC 62305-37: 2011, IEC 62305-38: 2011, IEC 62305-39: 2011, IEC 62305-40: 2011, IEC 62305-41: 2011, IEC 62305-42: 2011, IEC 62305-43: 2011, IEC 62305-44: 2011, IEC 62305-45: 2011, IEC 62305-46: 2011, IEC 62305-47: 2011, IEC 62305-48: 2011, IEC 62305-49: 2011, IEC 62305-50: 2011, IEC 62305-51: 2011, IEC 62305-52: 2011, IEC 62305-53: 2011, IEC 62305-54: 2011, IEC 62305-55: 2011, IEC 62305-56: 2011, IEC 62305-57: 2011, IEC 62305-58: 2011, IEC 62305-59: 2011, IEC 62305-60: 2011, IEC 62305-61: 2011, IEC 62305-62: 2011, IEC 62305-63: 2011, IEC 62305-64: 2011, IEC 62305-65: 2011, IEC 62305-66: 2011, IEC 62305-67: 2011, IEC 62305-68: 2011, IEC 62305-69: 2011, IEC 62305-70: 2011, IEC 62305-71: 2011, IEC 62305-72: 2011, IEC 62305-73: 2011, IEC 62305-74: 2011, IEC 62305-75: 2011, IEC 62305-76: 2011, IEC 62305-77: 2011, IEC 62305-78: 2011, IEC 62305-79: 2011, IEC 62305-80: 2011, IEC 62305-81: 2011, IEC 62305-82: 2011, IEC 62305-83: 2011, IEC 62305-84: 2011, IEC 62305-85: 2011, IEC 62305-86: 2011, IEC 62305-87: 2011, IEC 62305-88: 2011, IEC 62305-89: 2011, IEC 62305-90: 2011, IEC 62305-91: 2011, IEC 62305-92: 2011, IEC 62305-93: 2011, IEC 62305-94: 2011, IEC 62305-95: 2011, IEC 62305-96: 2011, IEC 62305-97: 2011, IEC 62305-98: 2011, IEC 62305-99: 2011, IEC 62305-100: 2011.



GALTRONICS - G02410-06621-11 PSEUDO OMNI CANISTER ANTENNA

| | |
|--|---------------------------------------|
| MECHANICAL SPECIFICATIONS | |
| DIMENSIONS (HxD): | 24.9 x 10 INCHES (643 x 255 mm) |
| WEIGHT EXCL MOUNTING BRACKETS: | 17.2lbs (8 kg) |
| NO. OF CONNECTORS: | 10 X 4.3-10 DIN FEMALE |
| CONNECTOR TYPE & FREQUENCY BAND (MHz): | 4 X 4.3-10 DIN FEMALE (1895-2360) MHz |
| | 4 X 4.3-10 DIN FEMALE (3350-3700) MHz |
| | 2 X 4.3-10 DIN FEMALE (8150-8550) MHz |
| MAX WIND SPEED: | 180 mph |
| RADOME MATERIAL: | ASA |
| SHIPPING DIMS (LxWxD): | 30"x19"x19" (762x483x483)mm |
| GROSS SHIPPING WEIGHT: | 28 lbs (12kg) |

PART NO. G02410-06621-11 (GRAY)
 PART NO. G02410-06621-011 (BROWN)
 PART NO. G02410-06621-011 (CHROME)

AT&T MOBILITY FUSED DISCONNECT

24"x36" SCALE: NTS
 11"x17" SCALE: NTS

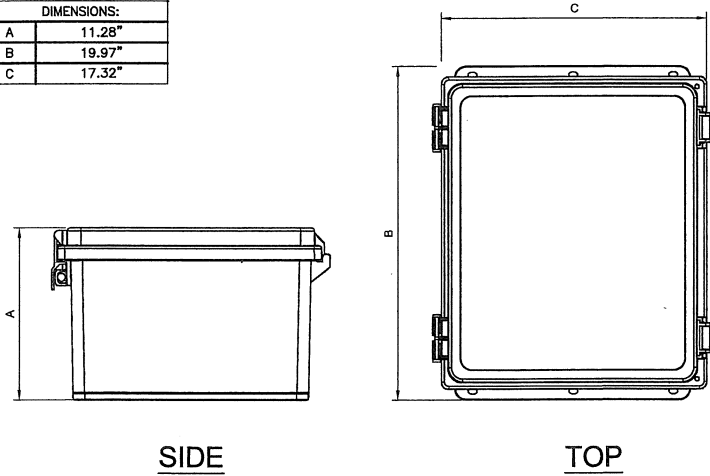
RAYCAP DISCONNECT

24"x36" SCALE: NTS
 11"x17" SCALE: NTS

GALTRONICS OMNI ANTENNA

24"x36" SCALE: NTS
 11"x17" SCALE: NTS

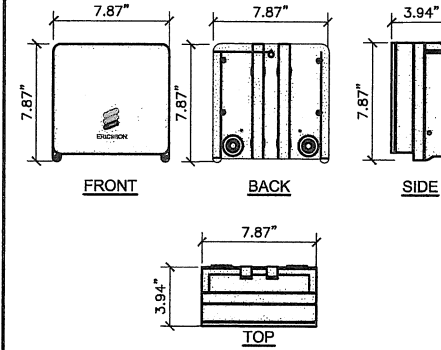
| HOFFMAN | |
|---|--------|
| POLYESTER POLYPRO, TYPE 4X # A181610PHC | |
| DIMENSIONS: | |
| A | 11.28" |
| B | 19.97" |
| C | 17.32" |



AVAILABLE FROM EXCEL SIGN AND DECAL:
<http://www.weneedsigns.com/home.php?cal+1135>
 AND CLICK ON AT&T
 PH: 510-651-0445
 N01-DC-16 1"x6" NOTICE DECAL
 "For 1 Foot Distance" VINYL DECAL WITH ADHESIVE BACKING

| NOTICE | |
|--------|--|
| | RF energy emitted by this device may exceed the FCC's general public exposure limits. Stay at least 1 foot away from the device. Call 800-638-2822 for help if you need access within 1 foot |

Place one NOTICE sticker at the bottom of the front of the radome of each antenna.



ERICSSON - MICRO RADIO 2203

| | |
|----------------------------------|--|
| MECHANICAL SPECIFICATIONS | |
| DIMENSIONS (WxDxH): | 7.87"x4.84"x7.87", INCLUDING MOUNTING BRACKET AND ESTHETIC FRONT COVER |
| VOLUME AND WEIGHT: | 4 LITRES AND < 4.5 kg (9.92 lbs) |
| MOUNTING: | WALL AND POLE MOUNT |

| | |
|----------------------------------|--|
| INTERFACE SPECIFICATIONS: | |
| ANTENNA PORTS: | 2 x 4.3-10(F) |
| CPRI: | 2 x 2.5/5/10 Gbps (EXCHANGEABLE SFP MODULES) |
| OPTICAL INDICATORS: | 6 |
| EXTERNAL ALARM: | 2 |
| FIELD GROUND: | 1 |

| | |
|-----------------------------------|-------------------------|
| ELECTRICAL SPECIFICATIONS: | |
| POWER SUPPLY: | -48 VDC OR 100 -250 VAC |
| POWER OUTPUT: | 97 WATTS MAX |
| MAX HEAT DISSIPATION: | 90 WATTS |
| MINIMUM AC FUSE RATING: | 6 AMP |

DRAWN BY: TL
 CHECKED BY: MM

| REV | DATE | DESCRIPTION |
|-----|------------|-------------------|
| C | 09/24/2018 | 100% CONSTRUCTION |
| B | 05/31/18 | 100% CONSTRUCTION |
| A | 03/09/18 | 90% CONSTRUCTION |

HOFFMAN A18160PHC WTR BOX

24"x36" SCALE: NTS
 11"x17" SCALE: NTS

OMNI ANTENNA DISCLAIMER LABEL

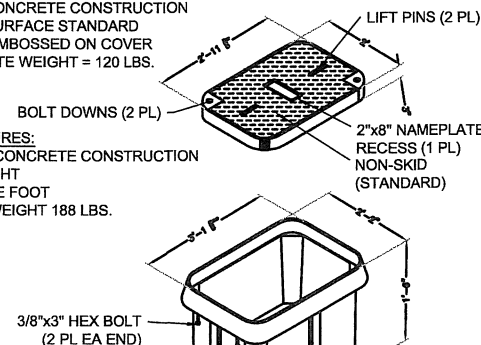
24"x36" SCALE: NTS
 11"x17" SCALE: NTS

MICRO RADIO 2203

24"x36" SCALE: NTS
 11"x17" SCALE: NTS

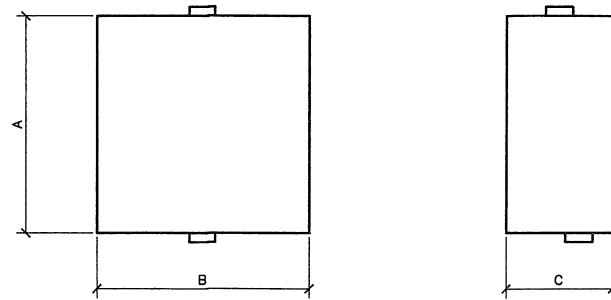
COVER FEATURES:

- STANDARD LOAD RATING: 20,800 LBS. WHEEL LOAD ON 10"x20" PLATE
- 2 BOLT DOWN LOCATIONS
- STAINLESS STEEL BOX INSERTS
- POLYMER CONCRETE CONSTRUCTION
- NON-SKID SURFACE STANDARD
- 20K TO BE EMBOSSED ON COVER
- APPROXIMATE WEIGHT = 120 LBS.



(OR APPROVED EQUAL)

| ELECTROMATE | |
|---------------------|-----|
| HINGED 3R ENCLOSURE | |
| DIMENSIONS: | |
| A | 12" |
| B | 12" |
| C | 6" |

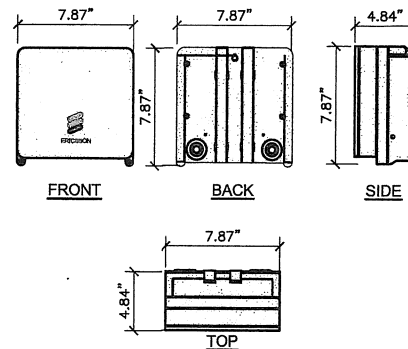


ERICSSON - MICRO RADIO 2205

| | |
|----------------------------------|--|
| MECHANICAL SPECIFICATIONS | |
| DIMENSIONS (WxDxH): | 7.87"x4.84"x7.87", INCLUDING MOUNTING BRACKET AND ESTHETIC FRONT COVER |
| VOLUME AND WEIGHT: | 4 LITRES AND < 4 kg (8.82 lbs) |
| MOUNTING: | WALL AND POLE MOUNT |

| | |
|----------------------------------|--|
| INTERFACE SPECIFICATIONS: | |
| ANTENNA PORTS: | 2 x 4.3-10(F) |
| CPRI: | 2 x 2.5/5/10 Gbps (EXCHANGEABLE SFP MODULES) |
| OPTICAL INDICATORS: | 6 |
| EXTERNAL ALARM: | 2 |
| FIELD GROUND: | 1 |

| | |
|-----------------------------------|-------------------------|
| ELECTRICAL SPECIFICATIONS: | |
| POWER SUPPLY: | -48 VDC OR 100 -250 VAC |
| POWER OUTPUT: | 97 WATTS MAX |
| MAX HEAT DISSIPATION: | 90 WATTS |
| MINIMUM AC FUSE RATING: | 6 AMP |



SIGNED DATE : 05/31/2018

IT IS A VIOLATION OF LAW FOR ANY PERSON, UNLESS THEY ARE ACTING UNDER THE DIRECTION OF A LICENSED PROFESSIONAL ENGINEER, TO ALTER THIS DOCUMENT.

SITE ID: HTBC1 05A

90 HUNTINGTON ST

HUNTINGTON BEACH, CA, 92648

SHEET TITLE

DETAILS

SHEET NUMBER

D-1

HANDHOLE

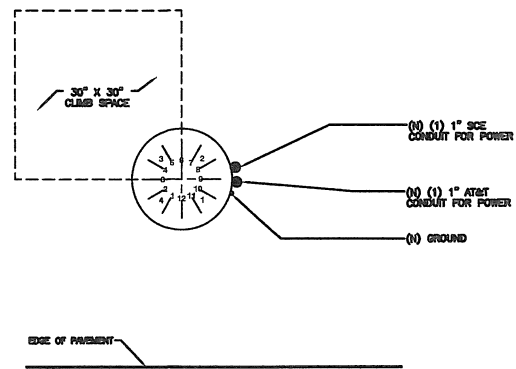
24"x36" SCALE: NTS
 11"x17" SCALE: NTS

SCE UN-METERED FUSED PANEL

24"x36" SCALE: NTS
 11"x17" SCALE: NTS

MICRO RADIO 2205

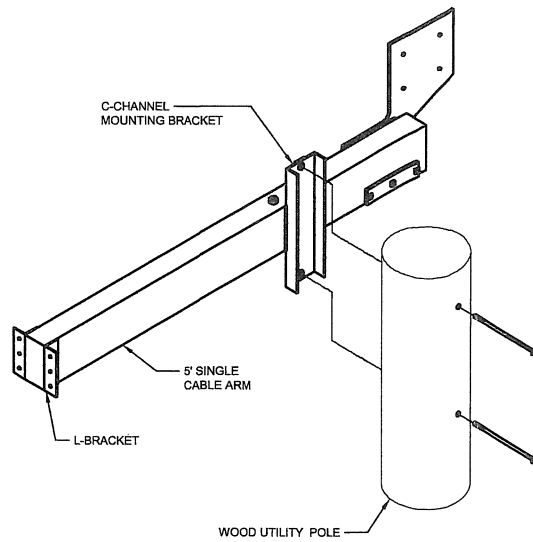
24"x36" SCALE: NTS
 11"x17" SCALE: NTS



RISER MOUNTING DETAIL

24"x36" SCALE: NTS
11"x17" SCALE: NTS

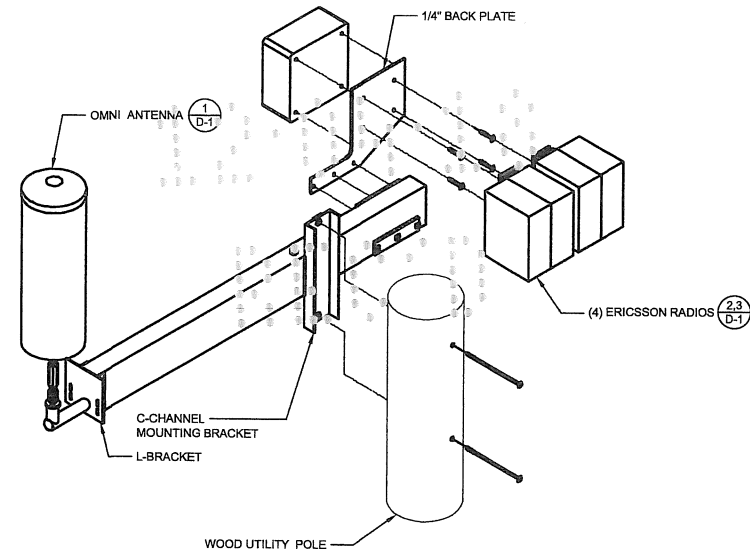
7



5' SINGLE CABLE EXTENSION ARM ASSEMBLY

24"x36" SCALE: NTS
11"x17" SCALE: NTS

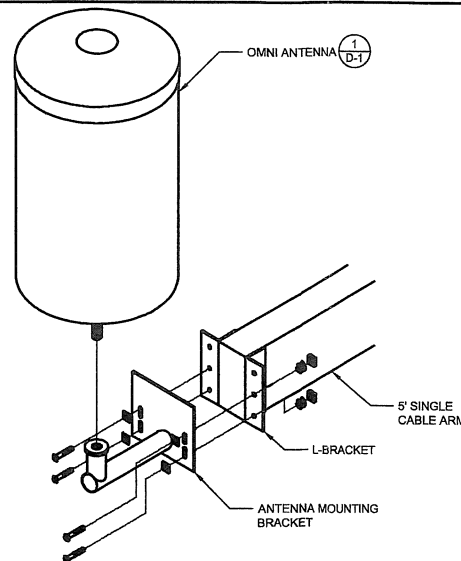
4



ASSEMBLY DETAIL

24"x36" SCALE: NTS
11"x17" SCALE: NTS

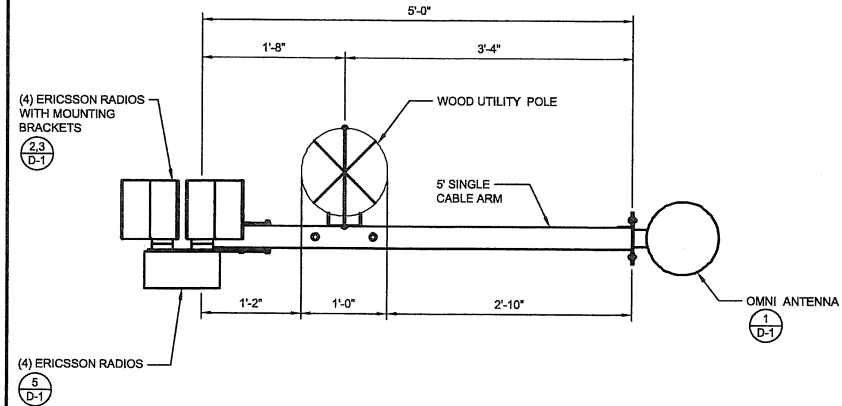
1



ANTENNA MOUNTING BRACKET

24"x36" SCALE: NTS
11"x17" SCALE: NTS

5



SINGLE CABLE EXTENSION ARM

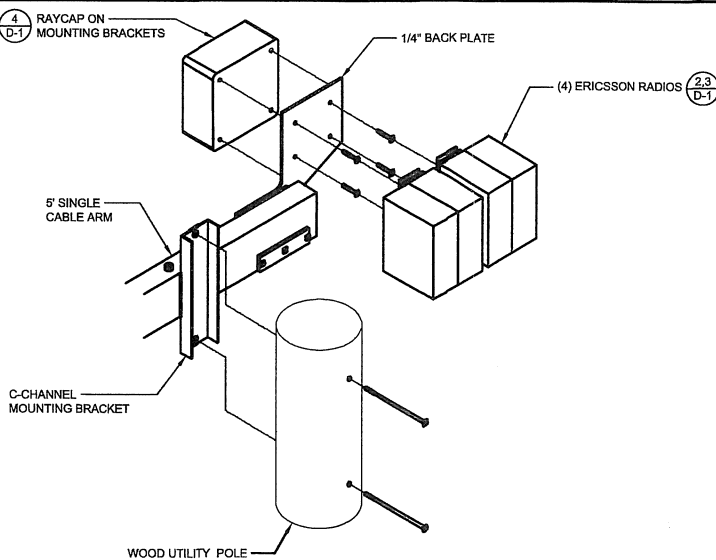
24"x36" SCALE: NTS
11"x17" SCALE: NTS

2

NOT USED

24"x36" SCALE: NTS
11"x17" SCALE: NTS

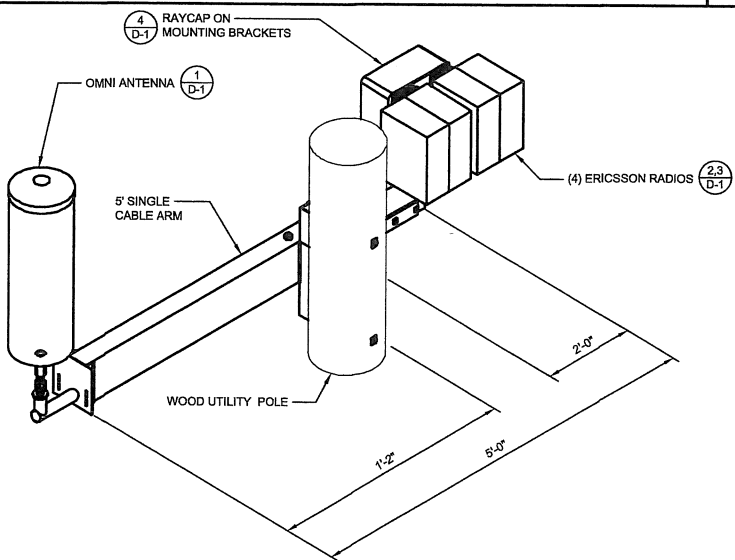
8



MOUNTING BRACKET W/ EQUIPMENT

24"x36" SCALE: NTS
11"x17" SCALE: NTS

6



MOUNTING DETAIL

24"x36" SCALE: NTS
11"x17" SCALE: NTS

3

NOT USED

24"x36" SCALE: NTS
11"x17" SCALE: NTS

9



DRAWN BY: TL
CHECKED BY: MM

| REV | DATE | DESCRIPTION |
|-----|------------|-------------------|
| C | 09/24/2018 | 100% CONSTRUCTION |
| B | 05/31/18 | 100% CONSTRUCTION |
| A | 03/09/18 | 90% CONSTRUCTION |

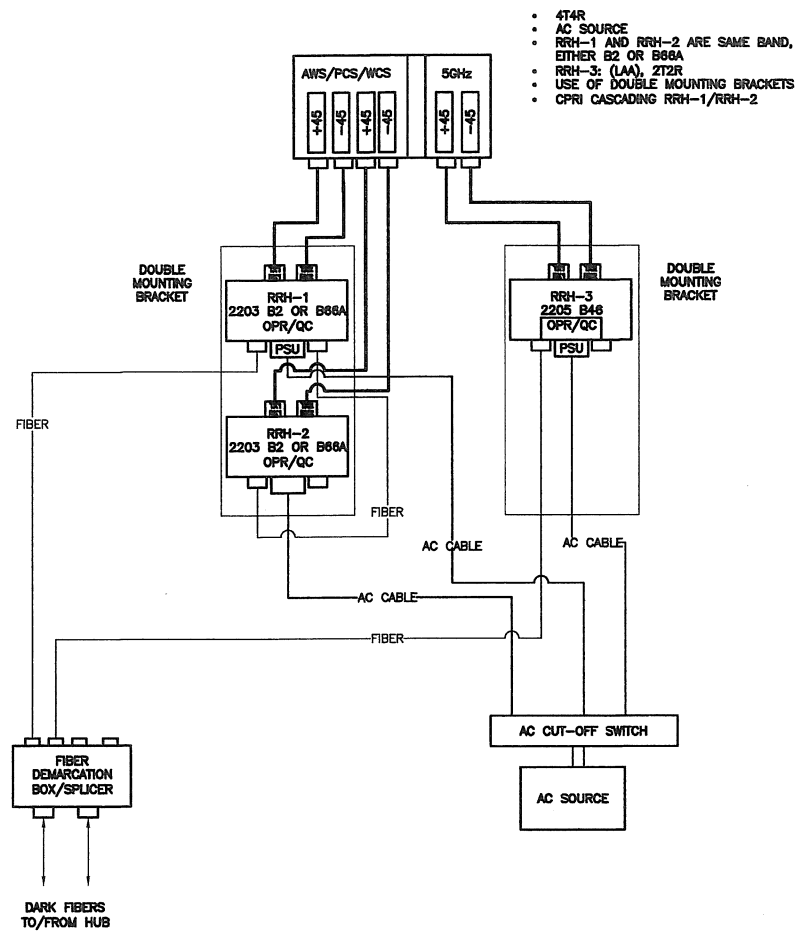
SIGNED DATE : 05/31/2018

IT IS A VIOLATION OF LAW FOR ANY PERSON, UNLESS THEY ARE ACTING UNDER THE DIRECTION OF A LICENSED PROFESSIONAL ENGINEER, TO ALTER THIS DOCUMENT.

SITE ID: HTBC1 05A
90 HUNTINGTON ST
HUNTINGTON BEACH, CA, 92648

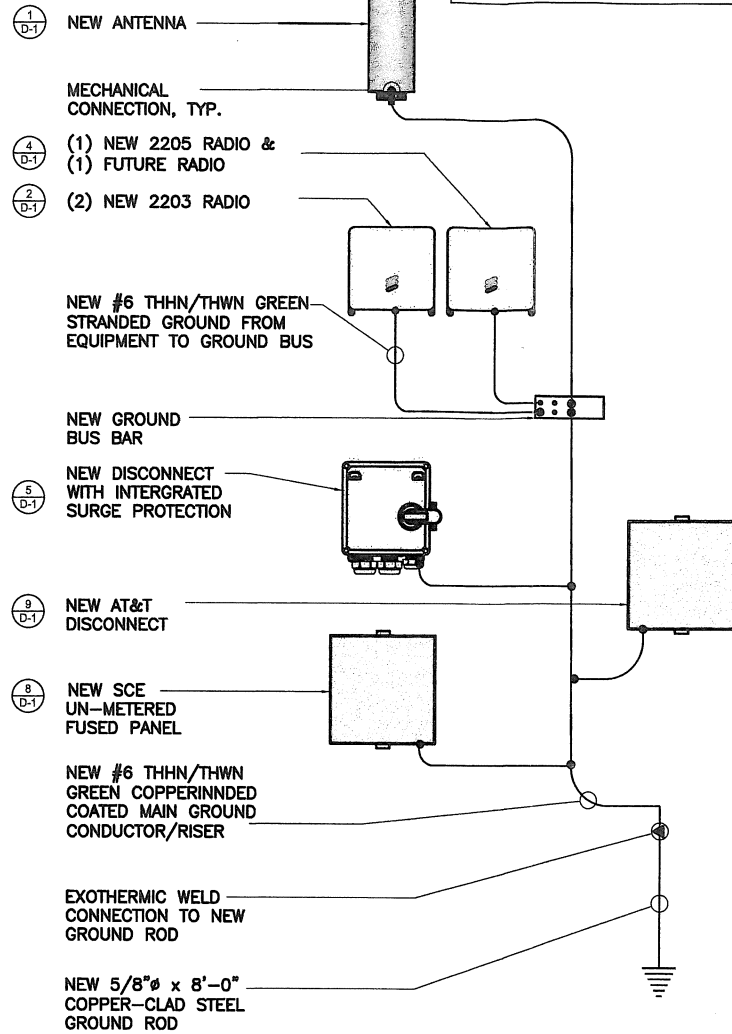
SHEET TITLE
DETAILS

SHEET NUMBER
D-2



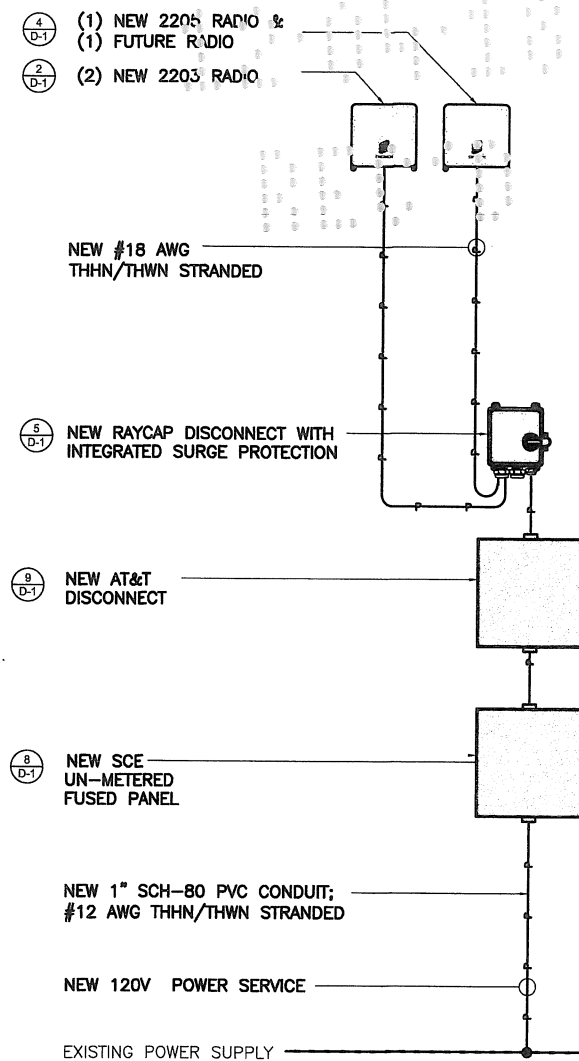
- 474R
- AC SOURCE
- RRH-1 AND RRH-2 ARE SAME BAND, EITHER B2 OR B66A
- RRH-3: (LAA), 2T2R
- USE OF DOUBLE MOUNTING BRACKETS
- CPRI CASCADING RRH-1/RRH-2

NOTE:
ALL GROUND CONDUCTORS TO BE #6 THHN/THWN GREEN STRANDED COPPER UNLESS OTHERWISE NOTED OR REQUIRED BY EQUIPMENT MANUFACTURER.



EXOTHERMIC WELD CONNECTIONS ■
MECHANICAL TYPE CONNECTIONS ●
GROUNDING BAR □

NOTE:
UTILITY DESIGN AND RUNS ARE PRELIMINARY. PENDING FINAL DESIGN FROM UTILITY PROVIDERS



PICO PLUMBING DIAGRAM

24"x36" SCALE: NTS
11"x17" SCALE: NTS

5

GROUNDING SCHEMATIC

24"x36" SCALE: NTS
11"x17" SCALE: NTS

3

SINGLE LINE DIAGRAM

24"x36" SCALE: NTS
11"x17" SCALE: NTS

1

NOT USED

24"x36" SCALE: NTS
11"x17" SCALE: NTS

6

NOT USED

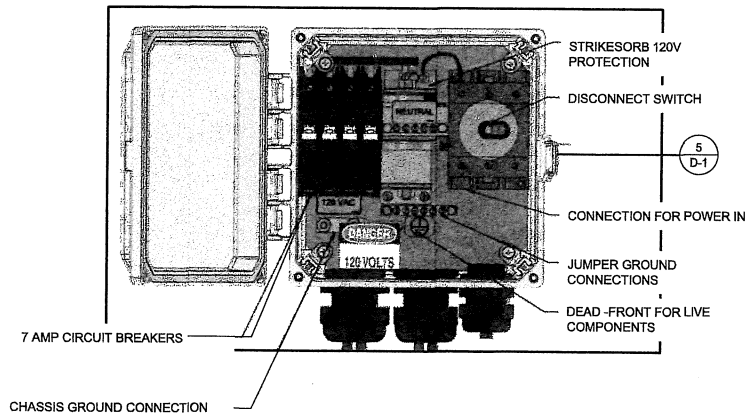
24"x36" SCALE: NTS
11"x17" SCALE: NTS

4

BREAKER SCHEDULE

24"x36" SCALE: NTS
11"x17" SCALE: NTS

2



DRAWN BY: TL
CHECKED BY: MM

| REV | DATE | DESCRIPTION |
|-----|------------|-------------------|
| C | 09/24/2018 | 100% CONSTRUCTION |
| B | 05/31/18 | 100% CONSTRUCTION |
| A | 03/09/18 | 90% CONSTRUCTION |

SIGNED DATE: 05/31/2018

IT IS A VIOLATION OF LAW FOR ANY PERSON, UNLESS THEY ARE ACTING UNDER THE DIRECTION OF A LICENSED PROFESSIONAL ENGINEER, TO ALTER THIS DOCUMENT.

SITE ID: HTBC1 05A
90 HUNTINGTON ST
HUNTINGTON BEACH, CA, 92648

SHEET TITLE
ELECTRICAL DETAILS

SHEET NUMBER
E-1